



SOLD

EVERYTHING AND MORE...

UNDER OFFER

Please email for more information

Entre

Don't be fooled by this large family home's modest façade. From the street, you have little clue that this quality-built home is a spacious five-bed double storey family home with an impressive array of quality inclusions.

Essence

The first entry reveals the elegant coffered 31-course ceilings in the entry and hallway, which is the first hint that this home offers quality fine details not usually included in standard homes. However, you will find luxury inclusions at every turn.

Beginning with the enormous home theatre with custom cabinetry, which includes a wet area bar plus a drop-down movie screen, built-in speakers for surround sound and full blackout curtains for the complete movie theatre experience at home.

The perfect separation of master and secondary bedrooms has been achieved with the master suite located on the ground floor while the upper level is dedicated to three queen sized bedrooms each with large built-in robes and a generous bathroom plus the convenience of a separate powder room. The fifth bedroom complete with built-in robes is positioned at the front of the home, could be the perfect guest room or home office.

The master suite includes 'his' and 'hers' walk-in robes and a stunning ensuite bathroom with large spa bath and walk-in twin shower. A double handbasin with ample storage and Hollywood lighting completes the space and the connected powder room is also another private guest toilet.

There is a gourmet kitchen that comes with an impressive suite of quality Siemens stainless-steel appliances including a five-zone induction cooktop as well as integrated dishwasher and seemingly endless storage options. The simple black and white palette is perfectly accented by soft green gloss cabinets that showcases three ovens including a steam oven and integrated microwave plus two warming drawers.

Double sliding double doors open from the lounge dining room to the fabulous timber lined

5 BED | 3 BATH | 2 CAR

PRICE:

\$1,650,000

OPEN FOR INSPECTION:

N/A

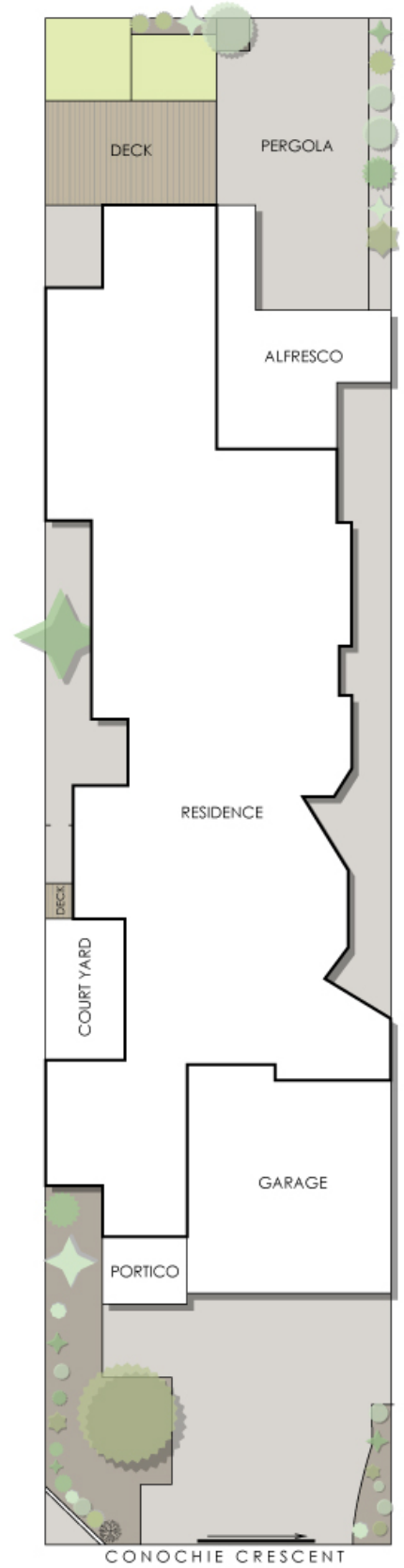
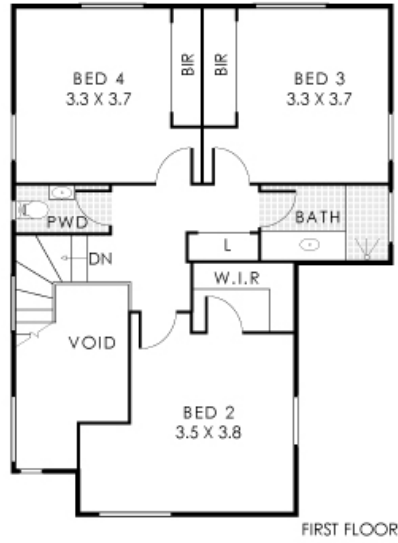
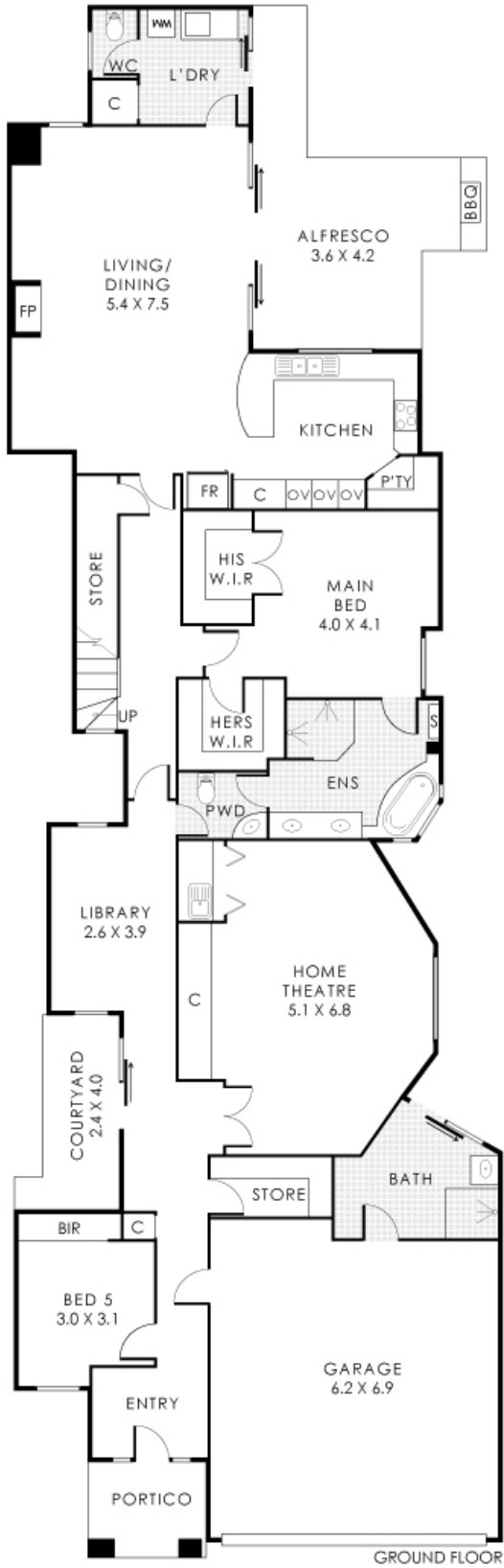


Jarrad Eaton

0403267251

jarrad@eatonproperty.com.au

eatonproperty.com.au



Disclaimer: Please note this floor plan is for marketing purposes and is to be used as a guide only. All dimensions are estimates only and may not be exact measurements.

Residence 284m² | Portico 6m² | Garage 53m² | Alfresco 19m² | Courtyard 8m² | Pergola 44m²
Total Area 414m²

Jarrad Eaton
0403267251
 jarrad@eatonproperty.com.au
 eatonproperty.com.au

This floorplan is for illustration purposes only to show the layout of the property. Whilst every effort has been made to ensure the accuracy of this floor plan, all measurements and any other information shown are an approximate interpretation only. Measurements are not intended to be taken for any error, omission, misrepresentation or to create any contractual obligations. Not to be used for any other purpose. www.crbcrealty.com.au

