



# FOR SALE

## 7.5% GROSS RETURN- MUST BE SOLD- CALL NOW

A modern, light filled and perfect first home. Enjoy a maintenance free lifestyle, with all the amenities you could want just moments away. The apartment offers open plan living with floor to ceiling windows capturing an abundance of natural light, while opening up to the balcony for more space and also allowing plenty of air flow through the property. With a cleverly designed kitchen, tucked away so you don't have to look at the dishes while enjoying dinner. The master bedroom has mirrored built in robes, along with access out to the balcony perfect for morning coffees.

Everything you could possibly want is at your doorstep in this beautiful apartment with the complex offering a pool, gym along with residences lounge and so much more. Unwind by the reflection pond or get your bike ready for the weekend at the bike workshop. Walk to Westfield, an abundance of local restaurants or unwind at the nearby parks. Close to the future light rail along with the CIT Woden to be completed in 2025.

Whether you want to buy now and live in later, or keep as a easy care investment. Viewing by appointment so enquire today to secure your next investment property

- 7th floor position
- SMEG ceramic cooktop, rangehood, oven and dishwasher
- Reverse cycle split system air conditioning to living room
- Floor-to-ceiling double glazed windows
- Light colour scheme throughout
- Storage cage
- Secure lift access
- Rented \$455 per week until October 2025
- Built 2021
- Body corporate and sinking fund \$888 approx. a quarter
- Rates \$387 approx. a quarter
- Land Tax- \$455 approx. a quarter
- 7.5% Gross return
- 48m2 approx. of internal living
- 8m2 approx. of balcony

1 BED | 1 BATH | 0 CAR

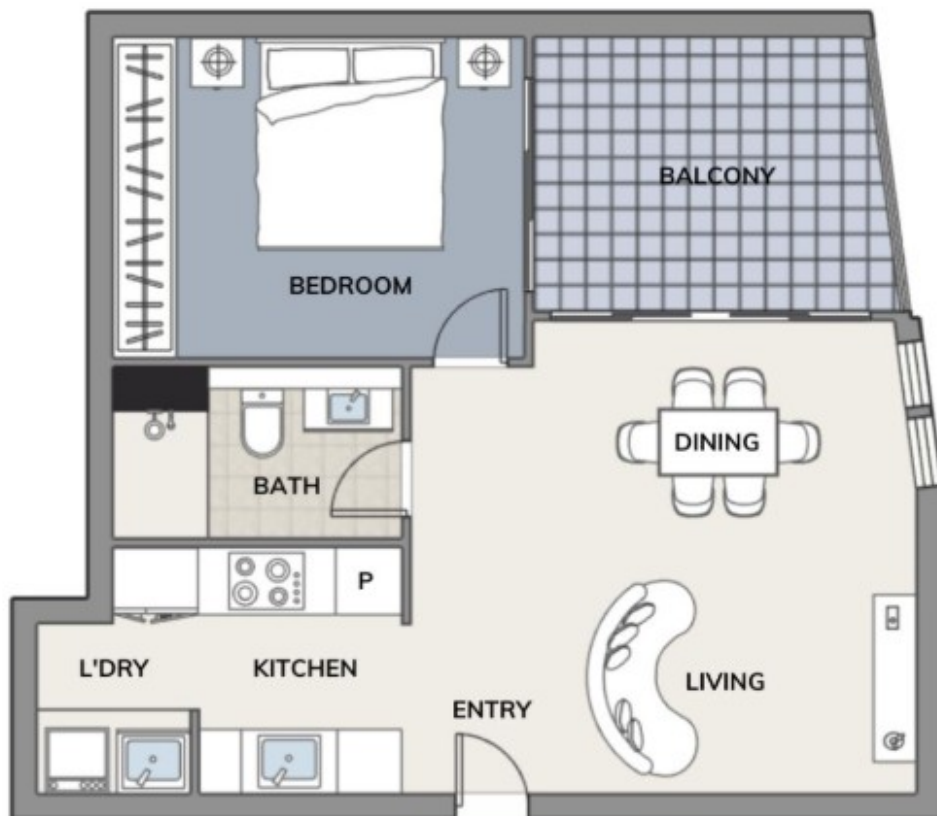
PRICE:  
\$315,000

OPEN FOR INSPECTION:  
N/A



**Sarah Cooper**  
**0478847993**  
sarah@thepropertyagents.com.au  
[thepropertyagents.com.au](http://thepropertyagents.com.au)

# 715/15 Bowes Street Phillip



1 BED | 1 BATH | EER 6.0

Disclaimer: Please note this floor plan is for marketing purposes and is to be used as a guide only. All dimensions are estimates only and may not be exact measurements.