

**SOLD**

## INCREDIBLE BRAND NEW INVESTMENT IN THE HEART OF THE CITY- POTENTIAL 5.5%+

Larger than the rest, this spacious 62m<sup>2</sup> 1 bedroom apartment is the same size as similar two bedrooms on the market!. Offering a spacious kitchen with island bench, an abundance of cupboards and Smeg appliances. The master bedroom offers plenty of storage will two sets of built in robes, and will be filled with natural light thanks to the floor to ceiling full wall windows.

Ducted heating and cooling keep temperatures comfortable in the large master bedroom, which features a built-in wardrobe and sliding doors to the balcony. The sleek floor-to-ceiling tiled bathroom sits opposite a hidden euro-style laundry. Additional benefits of this deluxe complex include a secure underground parking space, a bike hub, infinity pool, a car wash and an in-house concierge service.

Positioned close to the Canberra Centre and Glebe Park, you're surrounded by incredible restaurants, cafés and bars with the Canberra CBD at your doorstep. Take advantage of the bus and light rail lines, walking trails, bicycle paths and more, with Canberra Airport just a 12-minute drive away.

Ready now for you to move in and start enjoying

### Features

- 62sqm living + 9sqm balcony
- North facing
- Oxygen colour scheme
- Floor to ceiling windows in master
- Generous built in robes in master
- Ducted heating & cooling
- Double-glazed windows
- Central inner-city position
- Open plan living/dining & modern kitchen
- Modern kitchen with stone benchtops & smeg appliances
- Stylish bathroom & euro-style laundry

1 BED | 1 BATH | 1 CAR

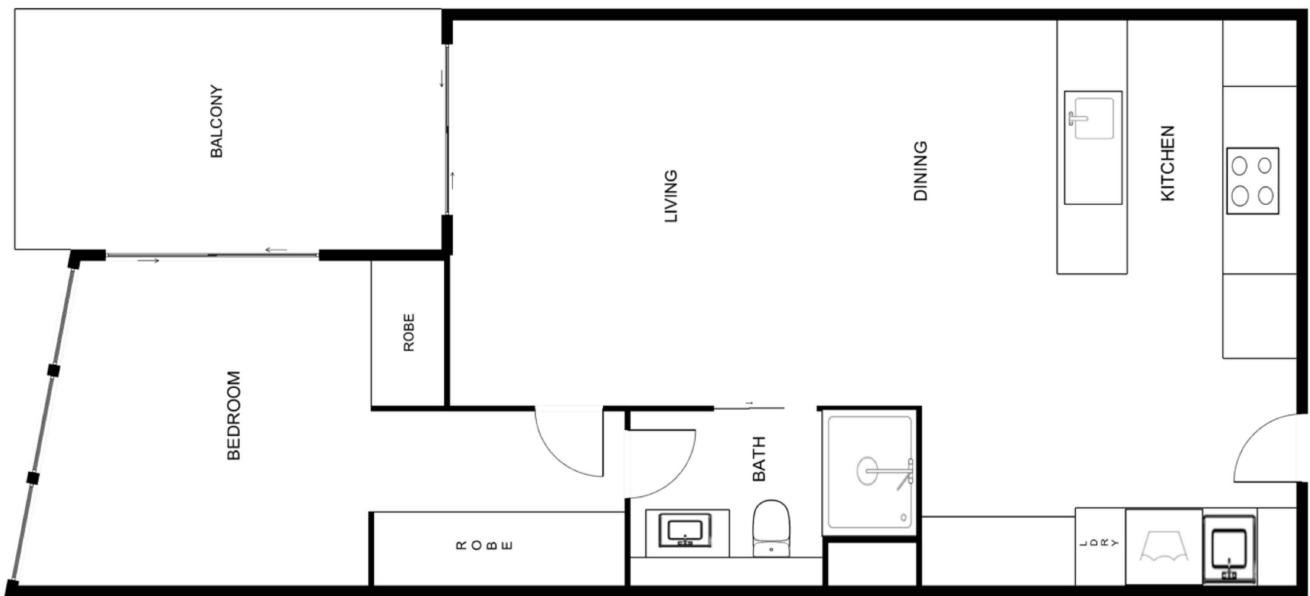
PRICE:  
\$490,000

OPEN FOR INSPECTION:  
N/A



**Sarah Cooper**  
**0478847993**

sarah@thepropertyagents.com.au  
thepropertyagents.com.au



Disclaimer: Please note this floor plan is for marketing purposes and is to be used as a guide only. All dimensions are estimates only and may not be exact measurements.