



**SOLD**

## OUTSTANDING OPPORTUNITY IN THE HEAR OF BELCONNEN

Due for completion in mid 2021, Cirrus will stand tall in the heart of Belconnen along the foreshore boasting north facing views for every apartment. This is an outstanding opportunity to secure a luxurious 2 bedroom plus study ensuite apartment with unparalleled and uninterrupted views of Lake Ginninderra, the Brindabella ranges and the lush surroundings that Belconnen has to offer.

Designed by Redgen Mathieson architects, this apartment is sure to impress with seamless space and integration between living areas ensuring that this is the perfect place to relax and unwind. With an abundance of natural light and high-end finishes to the double-glazed floor to ceiling windows and entertainer's balcony, not a single detail has been overlooked.

The designer kitchen is perfect for the chef of the house boasting stainless steel SMEG appliances, soft close cabinetry and stunning stone benchtops. The designer bathrooms include high end quality finishes with an option of Matte Black or Brushed Nickel tapware.

Cirrus offers residents access to gym and pool facilities, as well as several communal gardens. The buildings' ground floor will be filled with restaurants and commercial spaces open to the public. This is your chance to secure a luxurious lifestyle with everything that Belconnen has to offer at your fingertips.

### Features:

- â€¢ Stunning uninterrupted views to Lake Ginninderra
- â€¢ Spacious floorplan
- â€¢ Stone bench tops
- â€¢ Timber grained joinery and under mount sink
- â€¢ SMEG appliances
- â€¢ Soft close cabinetry
- â€¢ LED lighting throughout
- â€¢ High end quality finishes
- â€¢ Double glazed floor to ceiling windows to capture views
- â€¢ Ducted reverse cycle heating & cooling

**2 BED | 2 BATH | 1 CAR**

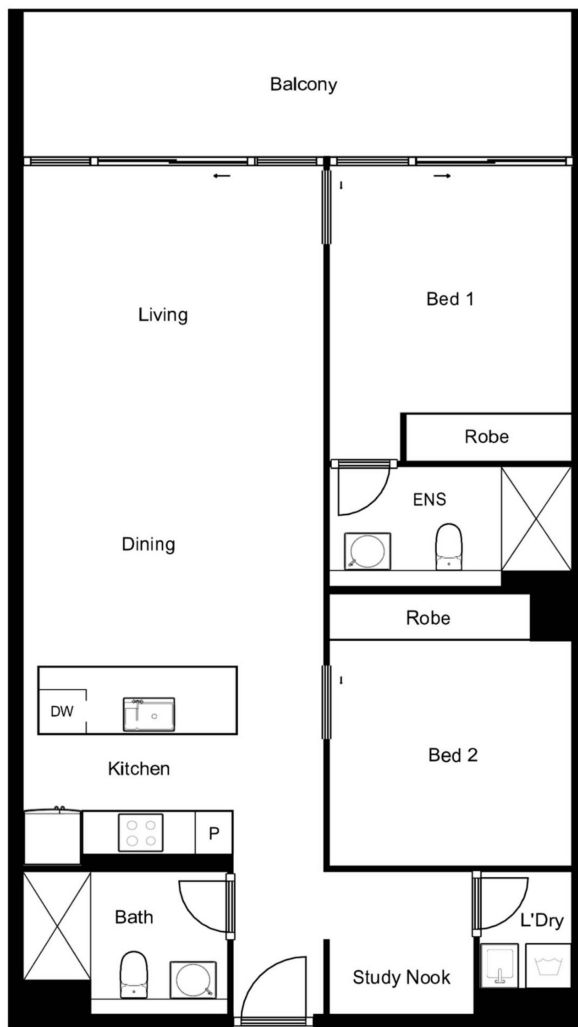
**PRICE:**  
**\$625,000**

**OPEN FOR INSPECTION:**  
**N/A**



**Sarah Cooper**  
**0478847993**

[sarah@thepropertyagents.com.au](mailto:sarah@thepropertyagents.com.au)  
[thepropertyagents.com.au](http://thepropertyagents.com.au)



Disclaimer: Please note this floor plan is for marketing purposes and is to be used as a guide only. All dimensions are estimates only and may not be exact measurements.