



FOR SALE

APPROX. 1.5 ACRES WITH DUAL LEVEL HOME IN GOONELLABAH - INCLUDES 2 STUDIO OPTIONS!

Wake to birdsong, wander through your own rainforest, pick fresh herbs for dinner and watch the sun set over Nightcap National Park. Hidden amongst the trees on approximately 1.5 acres at the prestigious northern end of the Goonellabah ridges, this remarkable lifestyle property offers a level of peace and privacy that's becoming increasingly difficult to find.

Designed with sustainable living in mind and proudly featured in Sustainable House Day 2019, this thoughtfully crafted home blends modern comfort with an exceptional connection to nature. Spanning two spacious levels, the flexible floorplan includes five bedrooms, three bathrooms and a private parents' retreat, making it equally suited to large families, multi-generational living or those seeking room to work from home.

Every aspect of the property has been designed to embrace a more self-sufficient lifestyle. An aquaponics system on the verandah provides fresh herbs and leafy greens just steps from the kitchen, while the established permaculture food forest offers an abundance of fruit trees alongside productive vegetable and herb gardens. It's a home where fresh produce is harvested moments before it reaches the table.

Step outside and discover a property that continues to surprise. A permanent spring-fed water feature, seasonal creek and private rainforest walk create a truly special setting, with towering Bangalow Palms, Tree Ferns, Staghorn Ferns and Bird's Nest Ferns providing a spectacular natural backdrop. Local wildlife including koalas, echidnas, wallabies, blue crayfish and an incredible variety of birdlife further enhance the sense of living amongst nature.

Beyond the established gardens lies a generous area of usable land, providing endless possibilities. Whether you envision a shed, Tiny Home, caravan accommodation, workshop, yoga studio or even a secondary dwelling (STCA), there's space here to bring your ideas to life.

Despite its peaceful setting, convenience remains close at hand. Handy to highly regarded private schools, with medical facilities, sporting grounds, shopping, clubs and public transport all nearby. Ballina's beaches, world-class rainforests and Ballina Byron Gateway Airport are also

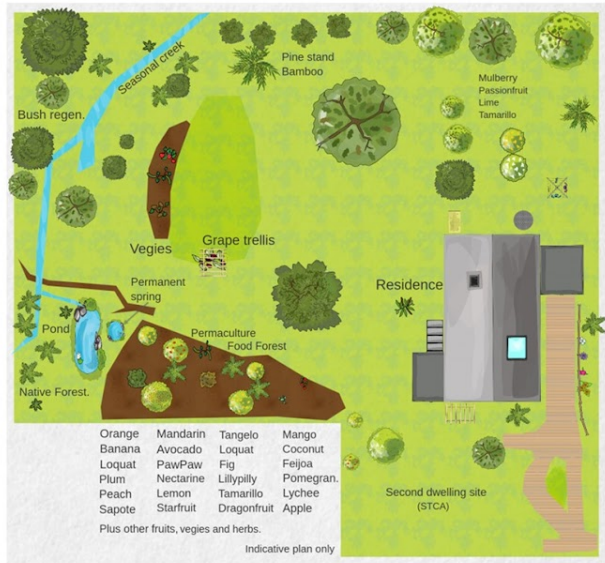
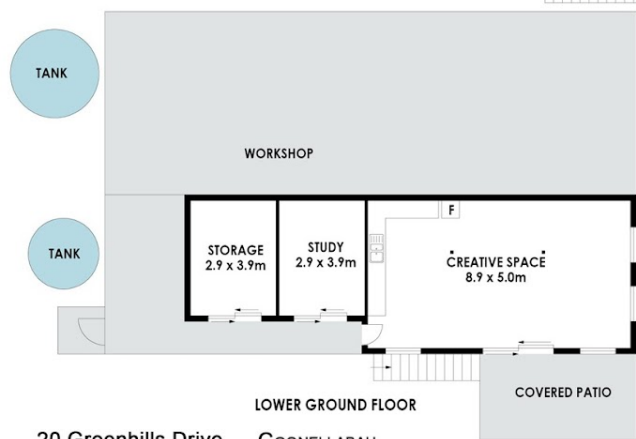
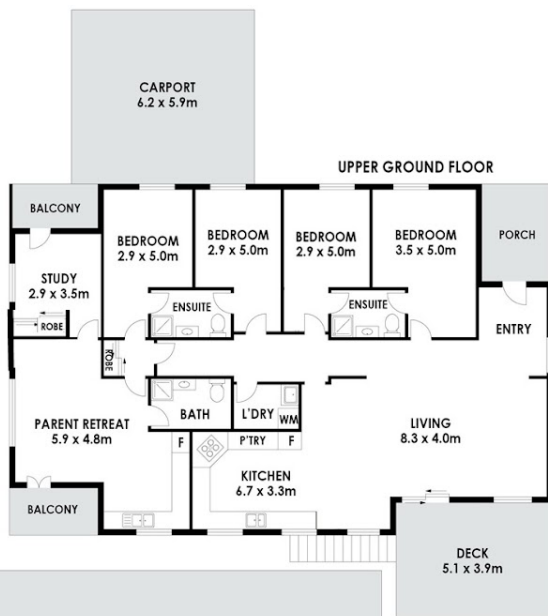
5 BED | 3 BATH | 2 CAR

PRICE:
Contact Agent

OPEN FOR INSPECTION:
N/A



Robyn Hunt
0448448758
robyn@atrealty.com.au
www.atrealty.com.au

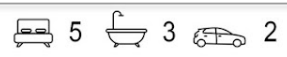


- Orange
 - Banana
 - Loquat
 - Plum
 - Peach
 - Sapote
 - Mandarin
 - Avocado
 - PawPaw
 - Nectarine
 - Lemon
 - Tangelo
 - Loquat
 - Fig
 - Lillypilly
 - Tamarillo
 - Dragonfruit
 - Mango
 - Coconut
 - Feijoa
 - Pomegran.
 - Lychee
 - Apple
- Plus other fruits, vegies and herbs.
- Indicative plan only

SITE PLAN (NOT TO SCALE)

20 Greenhills Drive GOONELLABAH

Floor Plan Disclaimer: Media Drive (MD) floor plans / site plans are intended as an approximate guide only. No representations or warranties of any nature are given or intended and any person using this information other than as a guide should always rely on their own enquiries. Media Drive property marketing services / 0413979054 / Photography, Floor plans, Video, Aerial photography / www.mediadrive.com.au



APPROXIMATE AREAS @realty	
INTERNAL FLOOR SPACE	- 269m ²
EXTERNAL FLOOR SPACE	- 53m ²
CARPORT	- 35m ²

Disclaimer: Please note this floor plan is for marketing purposes and is to be used as a guide only. All dimensions are estimates only and may not be exact measurements.

Robyn Hunt
0448448758
 robyn@atrealty.com.au
 www.atrealty.com.au

