

**SOLD**

## GENUINE 60S RETRO STYLED HOME IN THE HEART OF HOWRAH

Retro 60s style galore on offer in this 3 bedroom family home situated conveniently in the heart of Howrah.

Streetside the property is very private with two carports, one over 3.5m in height, perfect for a caravan or boat and 60s feature brickwork ensuring the front entry is sheltered and private from the street.

Entering the home through the front foyer is direct access to the sun-drenched front lounge featuring a full width sandstone wall with inset fireplace. This lounge also enjoys a separate floor mount heat pump and views to the north.

Beyond the entry foyer is access to the retro and functional kitchen, dining and second lounge room with second heat pump. A hallway leads through to the roomy main bedroom with numerous built-ins, bathroom, separate water closet and 2nd bedroom again with period built-ins.

The 60s features throughout the home are in excellent condition for their age and still very functional.

The kitchen enables access to the laundry and a huge pantry, likely added on some years ago.

Externally the home is on a very level allotment, fully fenced, has lawns either side, private rear yard and three separate sheds offering plentiful storage and privacy. Perfect for outdoor living and secure for pets and small children.

Located in sought-after Howrah, you will be just a short walk or drive away to Bellerive Beach and all the amenities you could ever need. From shopping centers to cafes, restaurants, and schools, everything is at your fingertips.

And the best part? This property is available now and is not tenanted, so you can move in and start living your dream life right away. And the cherry on top? The likely rent per week is \$500 to \$530 per week, making this an opportunity not to be missed.

Please Contact Ben Palmer from @realty now to schedule a viewing and make this house your forever home.

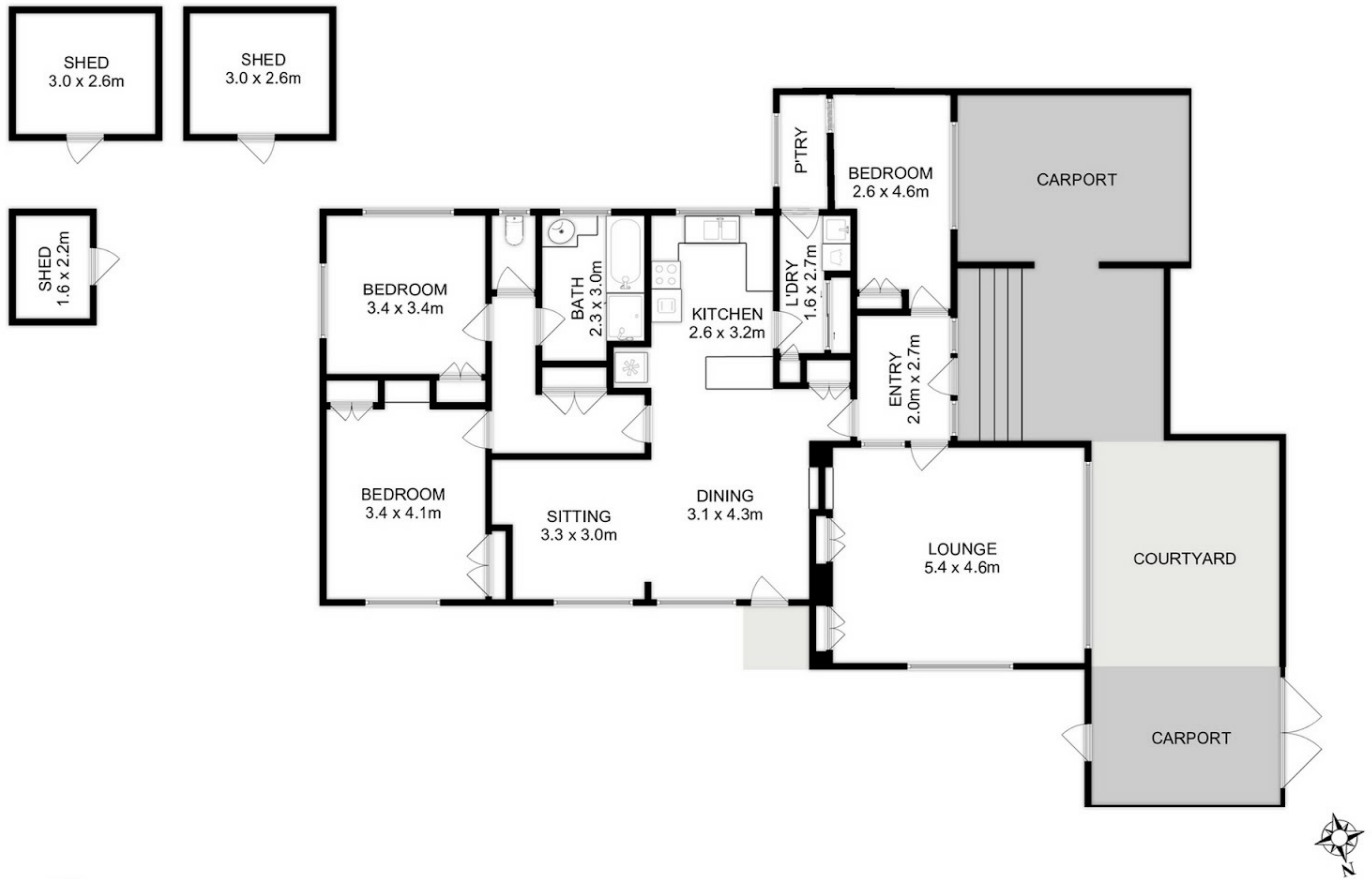
**3 BED | 1 BATH | 4 CAR**

**PRICE:**  
\$640,000

**OPEN FOR INSPECTION:**  
N/A



**Ben Palmer**  
**0417556731**  
benpalmer@atrealty.com.au  
[hobarthomes.com.au](http://hobarthomes.com.au)



Total Approx. Floor Area : 146 sqm  
Total Approx. Outbuilding Area : 19 sqm

All measurements are internal and approximate.  
This plan is a sketch for illustration, not valuation.  
Produced by Open2view.com

Disclaimer: Please note this floor plan is for marketing purposes and is to be used as a guide only. All dimensions are estimates only and may not be exact measurements.