



SOLD

SPACIOUS & CUTE AS A BUTTON FAMILY TREASURE WITH PRIVATE BACKDROP & SET IN ULTRA CONVENIENT LOCATION!

Welcome home to 81/36 Heathwood Street!
The keys to your picture perfect new family lifestyle awaits!

Nestled in the heart of the ultra convenient and tranquil Taigum and ready for the new owners to just move in & unpack, I proudly present this spacious & surprising family home!

Offering low maintenance living at its finest and boasting a classic design, this family home represents a fantastic opportunity to the market for any lucky buyers looking to break the rental cycle at an affordable price in amazing lifestyle rich location or for any astute investor looking to add a low maintenance wonder to their growing portfolio.

Presenting much more than first meets the eye, this home boasts an expansive main living & dining area plus a spacious master bedroom complete with ensuite and its own private balcony. The modern kitchen which comes complete with a plenitude of cupboard & bench space and quality appliances including a gas cooktop & dishwasher, perfect for preparing the largest of culinary gatherings.

With a seamless flow from indoor living to outdoor entertaining out to the generous alfresco dining area and perfectly set in the most private & intimate of locations with only 1 neighbour, this is certainly a home that ticks every box.

Properties in the area in this price range are moving lightning fast, so be quick & don't delay and call for booking times and inspection availabilities today!

Features include;

POSITION POSITION POSITION!!!... Only 200m to Taigum Square shopping complete with a Woolworths & Big W, close to train station on the direct CBD train line, only a stones throw to the ewly opened Holy Spirit Secondary College, just 5mins to Westfield Chermside and only 20mins to the Brisbane CBD!!

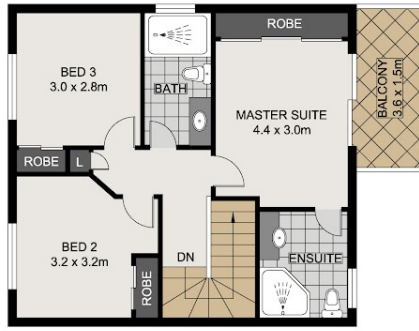
3 BED | 2 BATH | 1 CAR

PRICE:
\$649,000

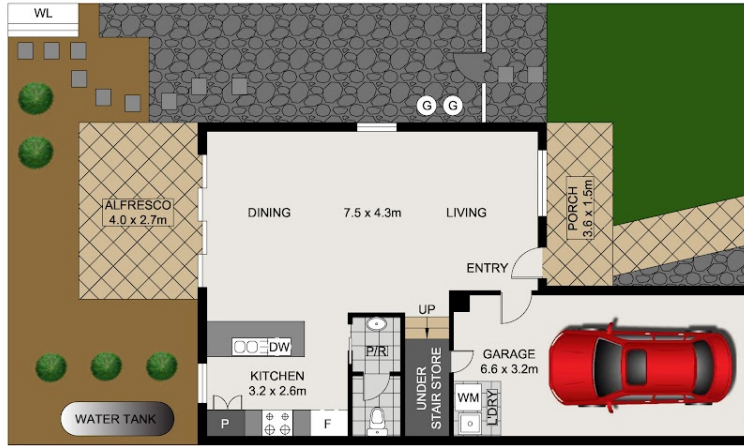
OPEN FOR INSPECTION:
N/A



Patrick D'Arrigo
0447381869
pdarrigo@atrealty.com.au
www.atrealty.com.au



UPPER LEVEL



LOWER LEVEL

0 1 2 3m

Scale in metres, indicative only. Dimensions are approximate. All information contained herein is gathered from sources we believe to be reliable. However, we cannot guarantee its accuracy and interested persons should rely on their own enquiries.

INT : 96.85m²
 EXT : 21.75m²
 GARAGE : 21.12m²
 TOTAL : 139.72m²

81/36 Heathwood Street, Taigum

Disclaimer: Please note this floor plan is for marketing purposes and is to be used as a guide only. All dimensions are estimates only and may not be exact measurements.