



FOR SALE

OWNERS MUST LIQUIDATE IMMEDIATELY. THEIR MISFORTUNE IS YOUR OPPORTUNITY OF A LIFETIME.

This turn key, tastefully renovated 2 story home, represents coastal living for the modern family in an awesome location. Perfect for families, investors and professionals alike, 23 Brooke Avenue is a short walk to the Chirn Park cafe precinct. Its head-turning features include large bay windows, a dream kitchen for the cook of the family & quality ABI Interior quality fittings in bathrooms. The home features high 3 metre ceilings & light filled living areas. The options are perfect for dual occupancy, the professional who works from home or as a large family home.

Features include -

- * Four spacious bedrooms. 2 upstairs, both with there own stunning ensuite & 2 downstairs with a full bathroom.
- * Multiple living zones including a formal living area, open-plan living & a home theatre.
- * A chefs gourmet kitchen featuring a striking stone benchtops, a butler's pantry, integrated dishwasher, free-standing oven.
- * The large island bench is perfect for entertaining.
- * A well appointed butlers pantry features a 2nd dishwasher & sink.
- * All bathrooms are exquisite with floor to ceiling tiling and brushed copper accessories from ABI interiors.
- * Master bedroom features a his & hers walk in robe & the ensuite has a oversized, large double shower.
- * Timber-look floors and high 3m ceilings throughout.
- * North-east deck perfect for entertaining.
- * A separate home office and media room.
- * Fully ducted reverse-cycle air conditioning throughout the home.
- * 2 oversized double carports & new PVC fencing.
- * 900 meters to the Broadwater
- * Light Rail and Broadwater 1.0km
- * 2.2km to Southport CBD and TAFE
- * 2.4km to St Hilda's School
- * 4.4km to TSS School
- * 3.9km to Griffith University

4 BED | 3 BATH | 4 CAR

PRICE:

Contact Agent.

OPEN FOR INSPECTION:

N/A

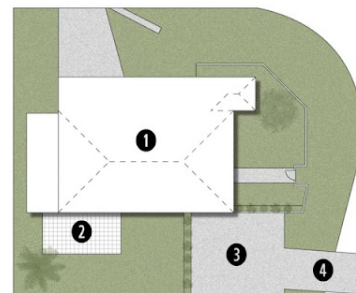
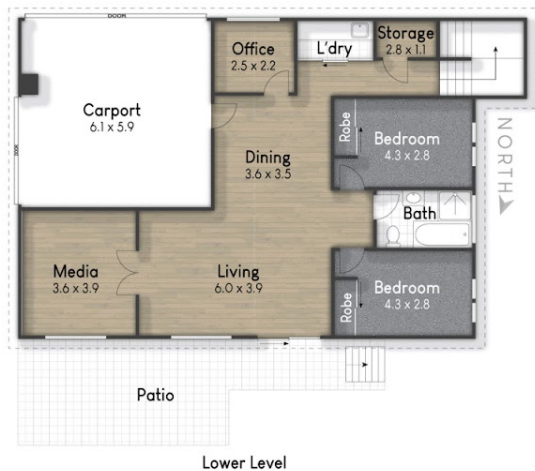


Leeane Brazier

0435424499

leeane@atrealty.com.au

www.atrealty.com.au



SITE PLAN LEGEND

1. Residence
2. Balcony
3. Carport
4. Driveway



Leeane Brazier
0435424499

23 Brooke Avenue, Southport
Internal: 308 m² | External: 126 m² | Approx Total: 434 m²

Plans shown are only indicative of layout. Dimensions are approximate.

Disclaimer: Please note this floor plan is for marketing purposes and is to be used as a guide only. All dimensions are estimates only and may not be exact measurements.