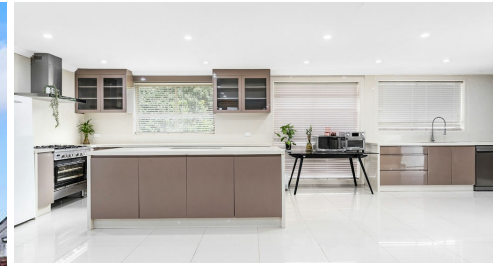


31 CORUNNA AVENUE LEUMEAH



FOR SALE

## EXPANSIVE FAMILY HOME IN A DESIRABLE LOCATION

Proudly presenting 31 Corunna Ave, Leumeah, a tastefully designed home boasting an expansive floor plan featuring vibrant interiors that carry you effortlessly from room to room. Situated in a desirable pocket of Leumeah and within close proximity to all of your modern comforts, it offers a comfortable lifestyle your family will thrive in.

### Features Include:

- Double timber door opens up to wide foyer
- Five generously proportioned bedrooms all include built in robes
- The spacious master suite is equipped with an ensuite, split system air conditioning, access to parents retreat / theatre room & backyard access
- Expansive open plan living / dining room
- Theatre room / Parents retreat
- Cooking enthusiasts will immerse themselves in the tremendous sized kitchen equipped with ample storage options
- Vast stone waterfall benchtops
- Quality appliances including TWO stainless steel ovens with gas cooktops, stainless steel overhead rangehood & dishwasher
- Pantry
- Breakfast bar with second sink
- Bright & airy main bathroom equipped with a spa bathtub, frameless shower & floor to ceiling tiling
- Separate toilet
- Roomy laundry with built in storage
- Downlights throughout
- Linen closet
- Large semi enclosed undercover entertaining area
- Low maintenance backyard
- Shed
- Front roller door opens up to reveal extra storage
- 568sqm block
- Located within close proximity to local schools, Leumeah train station, local shops, child friendly playgrounds, sporting - facilities & a short drive to Campbelltown's CBD

5 BED | 2 BATH | 0 CAR

### PRICE:

\$980,000 - \$1,010,000

### OPEN FOR INSPECTION:

N/A

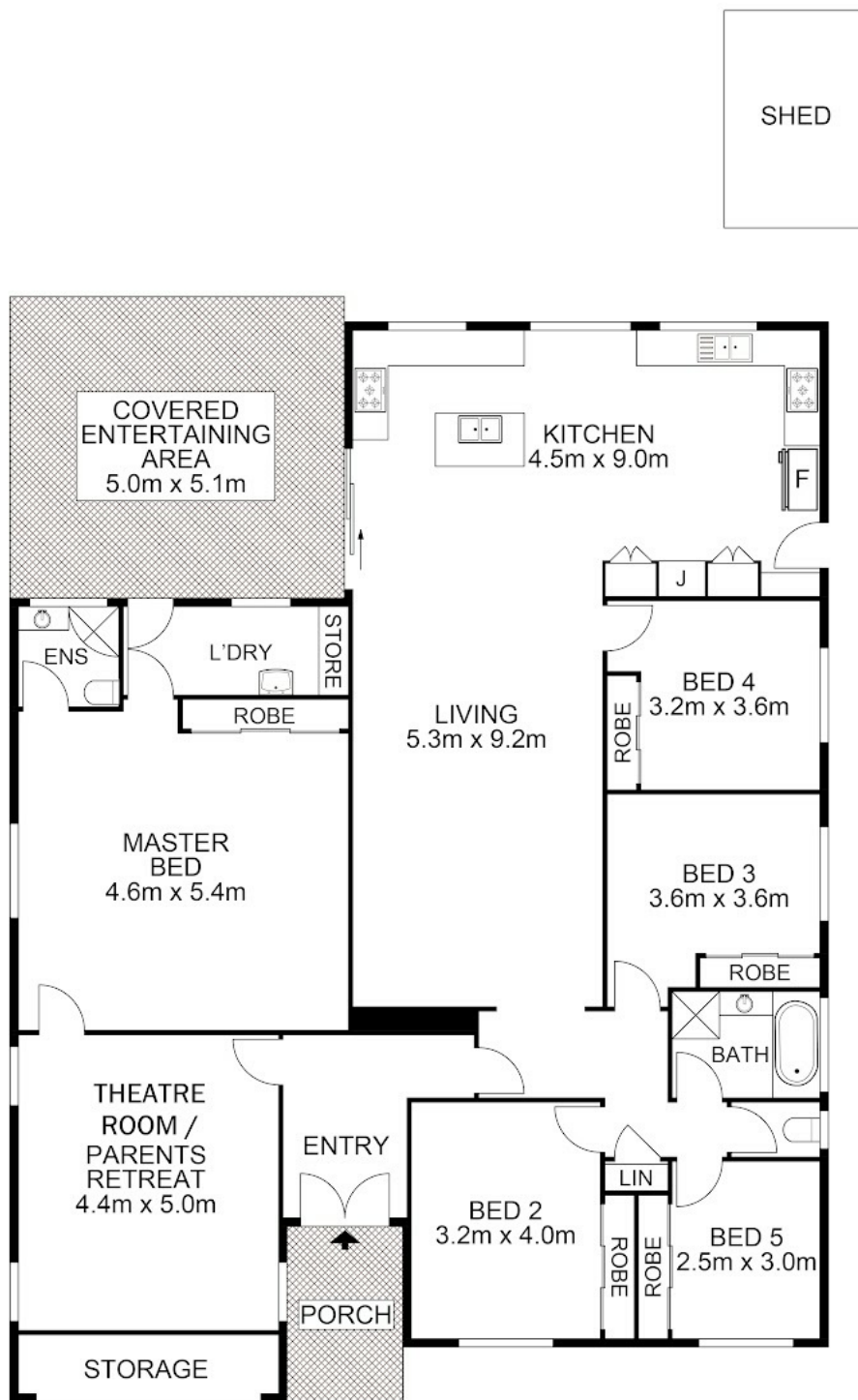


**Huss Al Salemi**

**0411699419**

[huss@atrealty.com.au](mailto:huss@atrealty.com.au)

[www.agencycentral.com.au](http://www.agencycentral.com.au)



**AGENCY**

Disclaimer: Please note this floor plan is for marketing purposes and is to be used as a guide only. All dimensions are estimates only and may not be exact measurements.

**31 Corunna Avenue, Leumeah**

**Huss Al Salemi** • All measurements are approximate • Drawn for marketing purposes only

**0411699419**

[huss@atrealty.com.au](mailto:huss@atrealty.com.au)

[www.agencycentral.com.au](http://www.agencycentral.com.au)

