

11/15 STONE STREET, SOUTH PERTH, WA 6150

eatonproperty



SOLD

EXECUTIVE RESIDENCE

Entre
Sitting at the very top of the boutique Riverstone Apartment building and with a lovely north/east aspect over Stone Street, this extra-large executive apartment is set to become your spacious private sanctuary.

External
Stone Street is a quiet street lined by beautiful mature trees where quiet enjoyment is assured by its cul-de-sac status with Riverstone Apartments sitting comfortably among the other quality neighbouring buildings.

Essence
Access into the secure building is by video intercom and then a lift to the top floor where the views are of trees from the main rooms plus some river from the bedrooms.

The sense of space is immediate from the wide entry hall and statement black floor tiles. The front of the home is where you will find the minor bedrooms along with the main bathroom and a full-size laundry room with excellent storage including a double linen press.

Both queen size secondary bedrooms enjoy some river views as well as built-in robes and either would make an excellent home office. The main bathroom is conveniently located between the bedrooms and offers excellent storage from the oversized vanity.

The main open plan living dining kitchen zone is modern design at its best by connecting this one large indoor space with the generous tree-top balcony for seamless indoor-outdoor flow. The balcony is truly a haven to enjoy breakfast in the morning sun or dinner on a summer evening without the westerly sun.

The kitchen overlooks this whole space and offers seemingly endless storage options including full height pantry and pot drawers as well as quality appliances, induction cooktop as well as granite benchtops and glass splashback.

The king size master suite with tree-top views to the street forms its own wing and delivers luxury inclusions. The dressing room has a large walk-in robe plus a lavish built-in vanity with seating area, storage, power points as well as full mirror. The oversized private ensuite is

3 BED | 2 BATH | 2 CAR

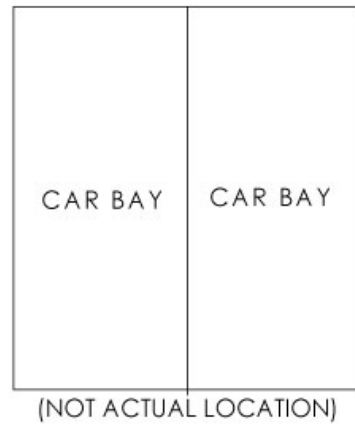
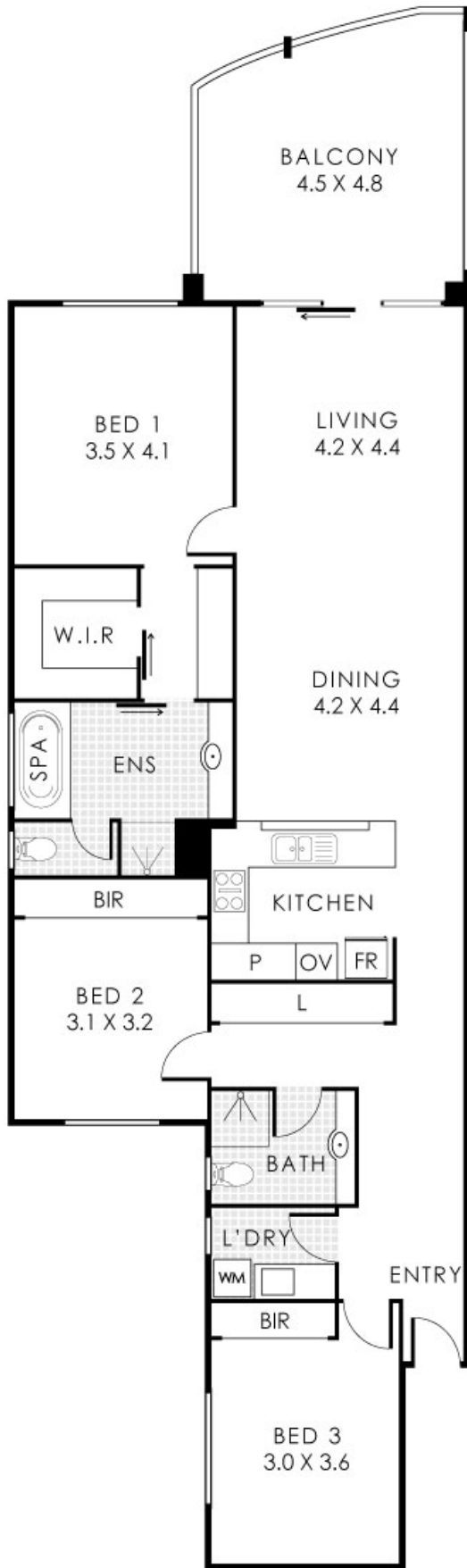
PRICE:
\$899,000

OPEN FOR INSPECTION:
N/A



Jarrad Eaton
0403267251

jarrad@eatonproperty.com.au
eatonproperty.com.au



Disclaimer: Please note this floor plan is for marketing purposes and is to be used as a guide only. All dimensions are estimates only and may not be exact measurements.

Residence 143m² | Balcony 21m² | Car Bays 28m²
 Total Area 192m² | Total Strata Lot 197m²

Jarrad Eaton
 0403267251
 jarrad@eatonproperty.com.au
 eatonproperty.com.au

This floorplan is for illustration purposes only to show the layout of the property. Whilst every effort has been made to ensure the accuracy of this floor plan, it may not be an exact representation of the actual property. It is shown as an approximate representation only. We do not warrant the accuracy of any information shown or account for wall thickness or roof area and any other details. It is not intended to be used as a contract or for any other purpose. Not to be used for any other purpose. www.crealityrealestate.com.au

creality