

SOLD

SPACES THAT MAKE THE PERFECT SENSE!

Situated in one of the most desirable pockets of Wyndham Vale, this home provides convenient access to a range of amenities.

One of the highlights of this property is its proximity to shops, schools, parks, and public transport links. You'll have everything you need within easy reach, making everyday life a breeze. Whether it's grabbing groceries, dropping off the kids at school, enjoying a leisurely stroll in the park, or commuting to work, you'll find it all just a stone's throw away.

The house itself features five spacious bedrooms equipped with built-in robes, providing ample storage space for your belongings. The central bathroom caters to the needs of the household, ensuring comfort and convenience.

The kitchen and dining area create a warm and inviting space for you to entertain guests or enjoy meals with your family.

The separate living zone offers an additional area for relaxation and entertainment, providing the perfect setting for cosy movie nights or unwinding after a long day.

Situated on a generous allotment of approximately 567m², this property offers unrestricted access to the rear where you will find a massive double car garage/workshop. This feature is particularly appealing for those who own boats, caravans or multiple vehicles.

In summary, 1 Botanic Way, Wyndham Vale presents an excellent opportunity to live in a highly sought-after location. With its convenient amenities, comfortable living spaces, and ample outdoor potential, this property is sure to meet the needs of discerning buyers seeking a quality family home.

5 BED | 1 BATH | 5 CAR

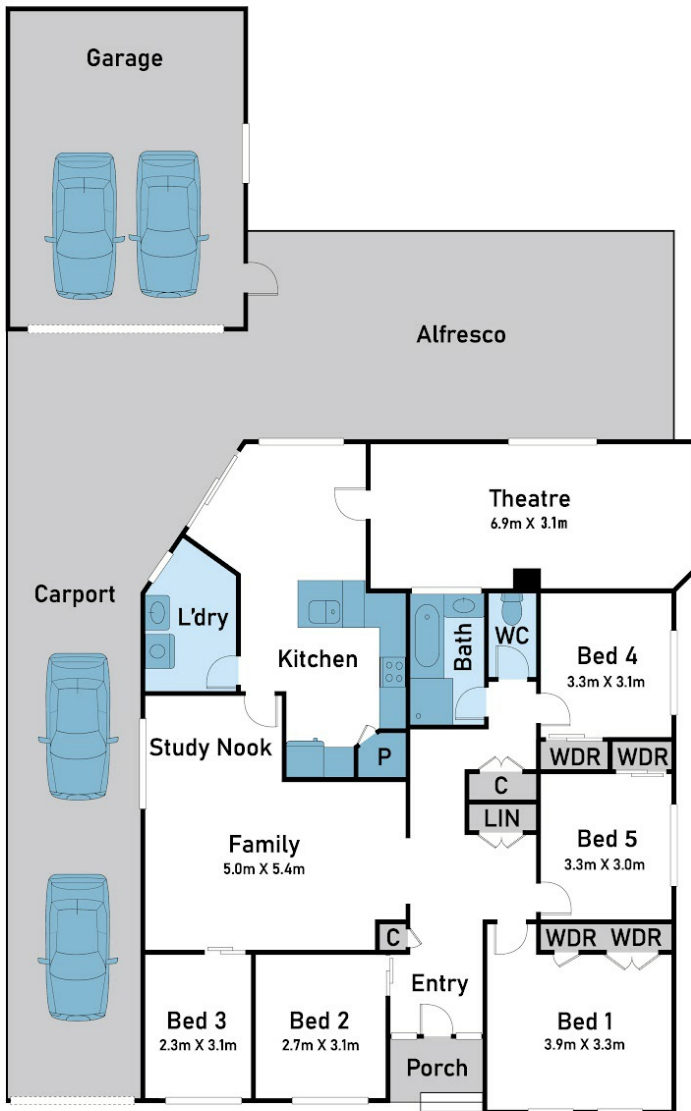
PRICE:
\$530,000

OPEN FOR INSPECTION:
N/A

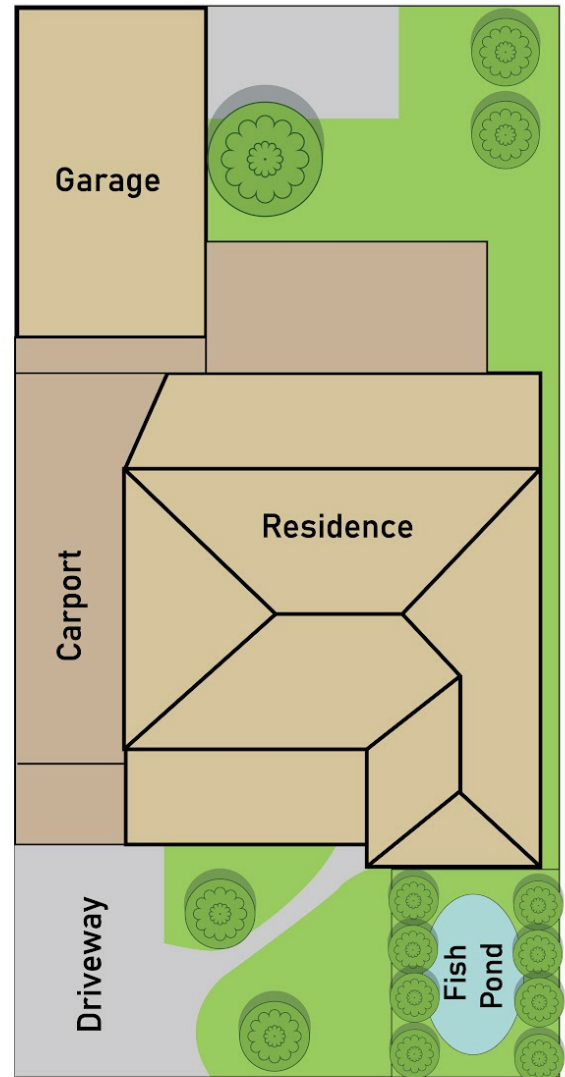


Joseph Hanna
0423966320
joseph@atrealty.com.au
www.atrealty.com.au

Floor Plan



Site Plan



1 Botanic Way, Wyndham Vale

@realty

* Dimensions are approximate and for illustrative purposes only

Disclaimer: Please note this floor plan is for marketing purposes and is to be used as a guide only. All dimensions are estimates only and may not be exact measurements.