



SOLD

CHARMING HOMETTE - GREAT OPPORTUNITY

* Only a short stroll to leafy parks, playgrounds, schools and transport. Close to Clovercrest Village, Ingle Farm Shopping Center and Tea Tree Plaza.

Highlights Include:

- * Freshly Painted throughout.
- * Main bedroom has mirrored robes.
- * Large second bedroom.
- * Open plan lounge and dining area with r/c split system air conditioner.
- * Kitchen with plenty of bench space & pantry.
- * bathroom featuring a bath, shower and modern vanity.
- * Separate toilet and separate laundry.
- * Pergola area , toolshed and lawn area.

Would make a great 1st Home, Investment or Retirement Retreat !

Be Quick or Miss out !

Call Terry Webster on 0419 993 357 for more information

RLA 269823

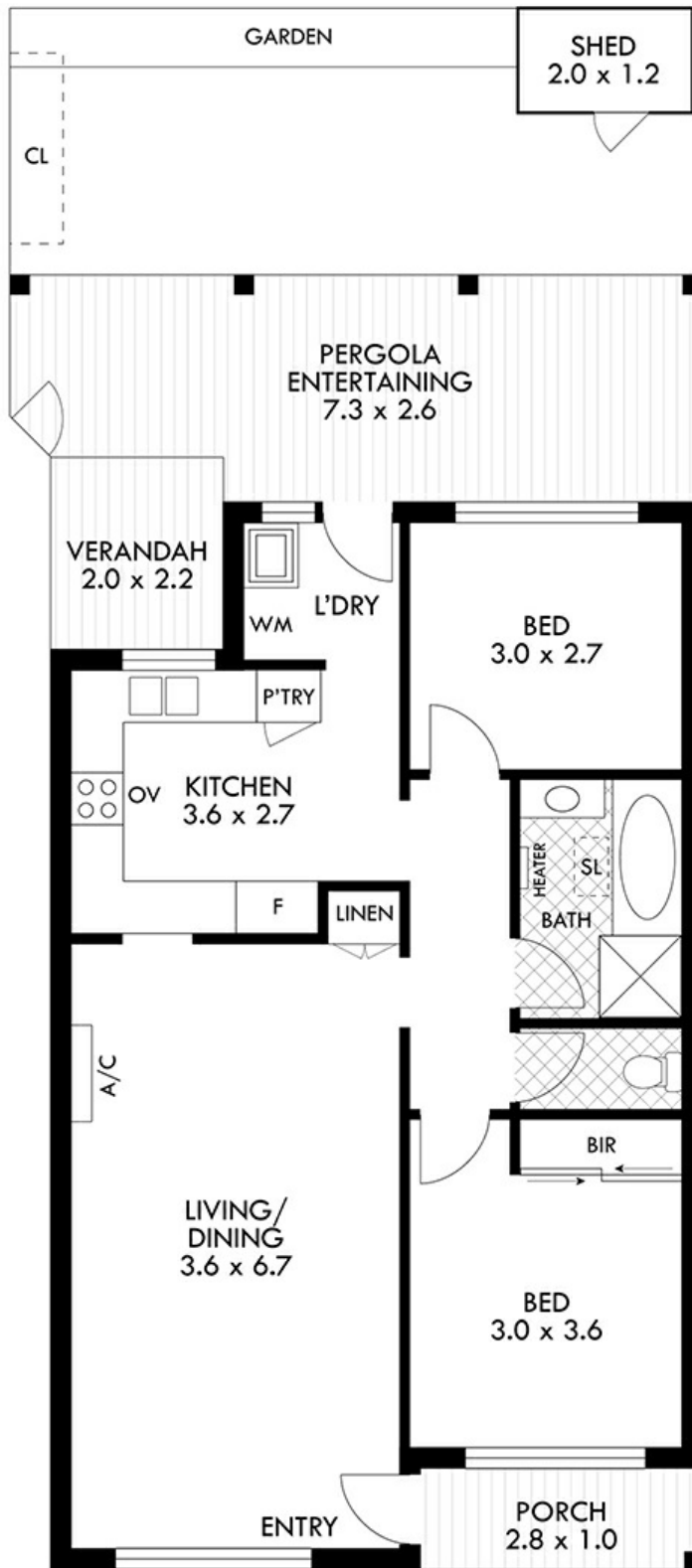
2 BED | 1 BATH | 1 CAR

PRICE:
\$455,000

OPEN FOR INSPECTION:
N/A



Terry Webster
0419993357
terrywebster@atrealty.com.au
www.atrealty.com.au
RLA: 269823



Disclaimer: Please note this floor plan is for marketing purposes and is to be used as a guide only. All dimensions are estimates only and may not be exact measurements.

Entertaining	19.2
TOTAL	101.3 approx sqm

scales in meters, This drawing is for illustration purposes only. All measurements are approximate and details intended to be relied upon should be independently verified.



Terry Webster
0419993357
8/8 Polst Avenue, Para Vista

terrywebster@atrealty.com.au
www.atrealty.com.au

