



# SOLD

## PRESTIGE WATERFRONT LIVING WITH SCENIC VIEWS IN PATTERSON LAKES

CLOSING DATE SALE TUESDAY 9TH JULY AT 2PM

Welcome to Your Dream Home!

Nestled along the picturesque waterfront of the Marina in Patterson Lakes, this prestigious family home offers a luxurious and serene lifestyle. Spread across three levels, this residence boasts multiple living zones, perfect for creating separate family areas that the whole family will love. With three spacious bedrooms with double built in robes and two modern bathrooms, including a master suite with walk in robes, all rooms are designed for comfort and privacy.

The fully renovated kitchen featuring brand new appliances is a chef's delight, and the recently updated bathrooms boast high-end finishes that the whole family will love. The entire home has been newly painted and refloored, giving it a fresh, modern feel. A newly installed gas infinity hot water unit ensures endless hot water, while gas ducted heating and evaporative cooling throughout provide year-round comfort. The ducted vacuum system also ensures convenience when cleaning.

This home offers ample storage options, including under stairs storage and large attic space with pulldown stairs for ease of storing larger items. Outdoor living is a pleasure with a downstairs courtyard plus three balconies throughout the home, all offering scenic views. Conveniently located close to top-rated schools, shopping centres, and public transport, this home truly has it all.

Ideal for families seeking a combination of luxury, convenience, and space, this property is ready for you to move in and start living your dream. Don't miss the opportunity to make this prestigious waterfront property your forever home. Schedule a viewing today and experience the lifestyle you've always desired!

For more information or to arrange a private inspection, please contact George Shehata on 0452 460 733

3 BED | 2 BATH | 2 CAR

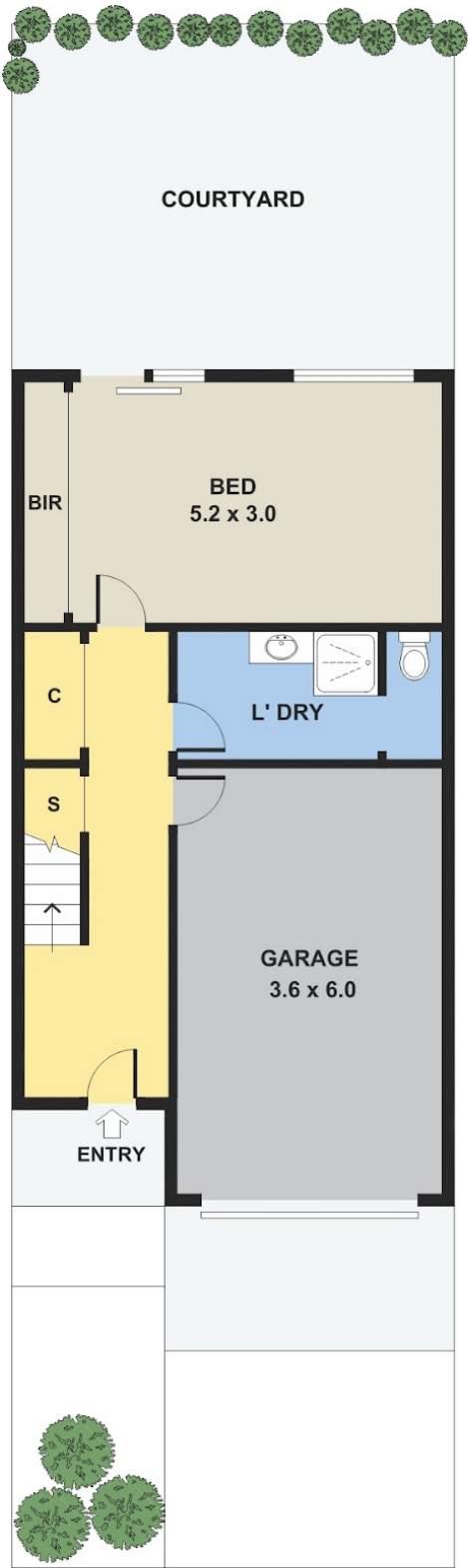
PRICE:  
\$860,000

OPEN FOR INSPECTION:  
N/A

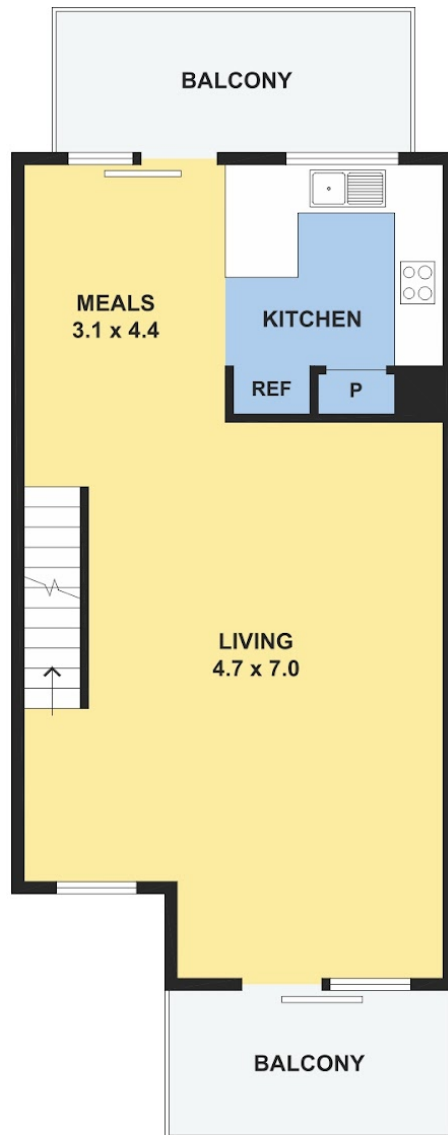


**George Shehata**  
**0452460733**

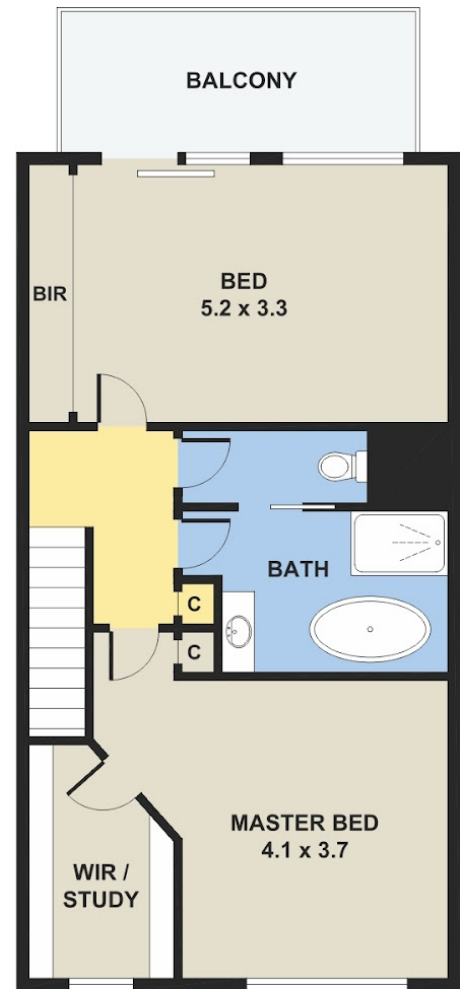
george.shehata@atrealty.com.au  
[www.atrealty.com.au](http://www.atrealty.com.au)



GROUND FLOOR



FIRST FLOOR



SECOND FLOOR

Disclaimer: Please note this floor plan is for marketing purposes and is to be used as a guide only. All dimensions are estimates only and may not be exact measurements.