

5 BODALLA STREET APPLE TREE CREEK



FOR SALE

AFFORDABLE FIRST HOME OR INVESTMENT OPPORTUNITY!

Welcome to your charming new home in the heart of Apple Tree Creek, Queensland, Australia. Nestled on a generous 1654 square meters of land, this property offers a cozy retreat in a picturesque setting.

Upon entering, you will be captivated by the modern design of this home. The open floor plan creates a seamless flow, ideal for hosting guests or enjoying quality time with loved ones. Sunlight pours in through large windows, infusing the space with warmth and creating a welcoming ambiance.

The three spacious bedrooms are bathed in natural light, each exuding its own unique charm. These rooms provide a perfect sanctuary for relaxation after a long day. The stylish bathroom boasts modern amenities for your comfort and convenience.

This property also presents a great investment opportunity. Currently leased at \$500 per week, with the lease set to expire soon, you have the flexibility to move in immediately or continue renting out the space for passive income. Situated in the desirable town of Apple Tree Creek, this home is poised to attract tenants and yield a lucrative rental return.

Location is another highlight of this property. Tucked away in the serene town of Apple Tree Creek, you can enjoy a peaceful lifestyle while still being close to amenities and attractions. Whether strolling through nearby parks or venturing to the stunning beaches and national parks just a short drive away, you'll have the best of both worlds at your doorstep.

Key features include:

- Three well-proportioned bedrooms, one with built-in robes, air-conditioning, blinds, and electric fans
- Spacious modern kitchen with plenty of pantry space
- Air-conditioned formal lounge room
- Modern bathroom with shower and separate toilet
- Good-sized laundry and additional toilet
- Colorbond roof less than 12 months old

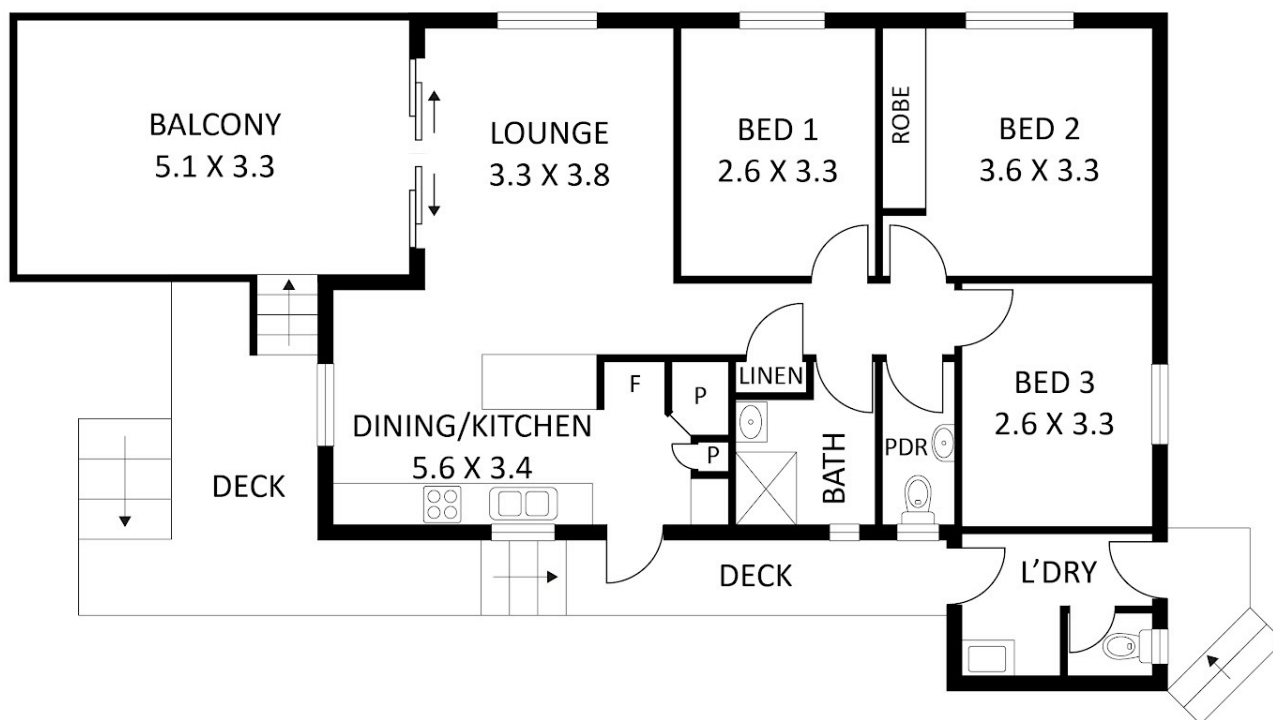
3 BED | 1 BATH | 4 CAR

PRICE:
Contact Agent

OPEN FOR INSPECTION:
N/A



Sean Coulton
0447389260
sean.coulton@atrealty.com.au
www.impactproperties.au



Please note this floor plan is for marketing purposes and is to be used as a guide only. Floor plan, furniture, and fixture measurements and dimensions are approximate and are for illustrative purpose only. Dimensions in metres. All efforts have been made to ensure its accuracy at the time of print.

AREA
INT : 72.00 m² (Approx)
EXT : 38.00 m² (Approx)

5 BODALLA STREET APPLE TREE CREEK

Disclaimer: Please note this floor plan is for marketing purposes and is to be used as a guide only. All dimensions are estimates only and may not be exact measurements.