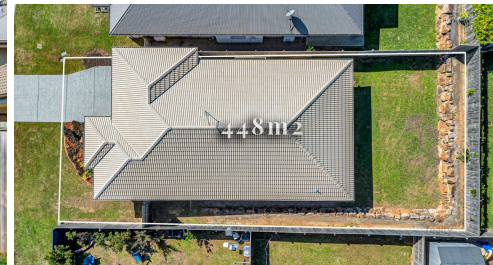


6 CARDAMOM CLOSE, GRIFFIN, QLD, 4503



SOLD

SOLD BY JOE HAWES - BRISBANE PROPERTY PARTNERS

IF YOU REQUIRE MORE INFORMATION, PLEASE COMPLETE THE ENQUIRY FORM ON THIS WEBSITE. THANK YOU.

Located in the increasingly desirable northern suburb of Griffin, this modern 4-bedroom residence is instantly appealing. Resting peacefully on a 448 square-metre block with a generous back yard, this attractive home boasts contemporary and timeless style, with a wide open-plan living area plus a separate lounge/media room, ensuring comfort and practicality for years to come for growing families, or a great potential rental return for astute investors. The property's location puts residents conveniently close to local schools, parks, new shopping village, amenities, Westfield North Lakes and M1 Bruce Highway access.

Features include:

- *Smartly designed, modern and spacious 4-bedroom residence, plus study nook
- *Tiled open-plan living area with air conditioning, ceiling fan, new LED lighting throughout
- *Covered and private rear alfresco terrace, ideal for BBQs and entertaining
- *Galley kitchen, island with stone bench tops, meals counter, gas cook top, dishwasher
- *Spacious separate lounge/media room offers a great second living space option
- *Generous bedrooms, master with air conditioning, walk-in-robe, and ensuite bathroom
- *All bedrooms offer fully fitted wardrobes with shelving, hanging space, ceiling fans
- *Quality bathrooms, stone-top vanities, feature tiling; ample storage
- *Remote-control double garage with laundry and back yard access
- *Fully fenced, near-level yard, ideal for kids and pets; scope for in-ground pool and/or shed (STCA)
- *Convenient to the new Freshwater Village retail development (with Woolworths) opening 2024
- *Easy access to M1 Bruce Highway, schools, amenities, Westfield North Lakes
- *Fabulous property, ideal for homebuyers, families, retirees, or astute investors alike. VACANT NOW!

IF YOU REQUIRE MORE INFORMATION, PLEASE COMPLETE THE ENQUIRY FORM ON THIS WEBSITE. THANK YOU.

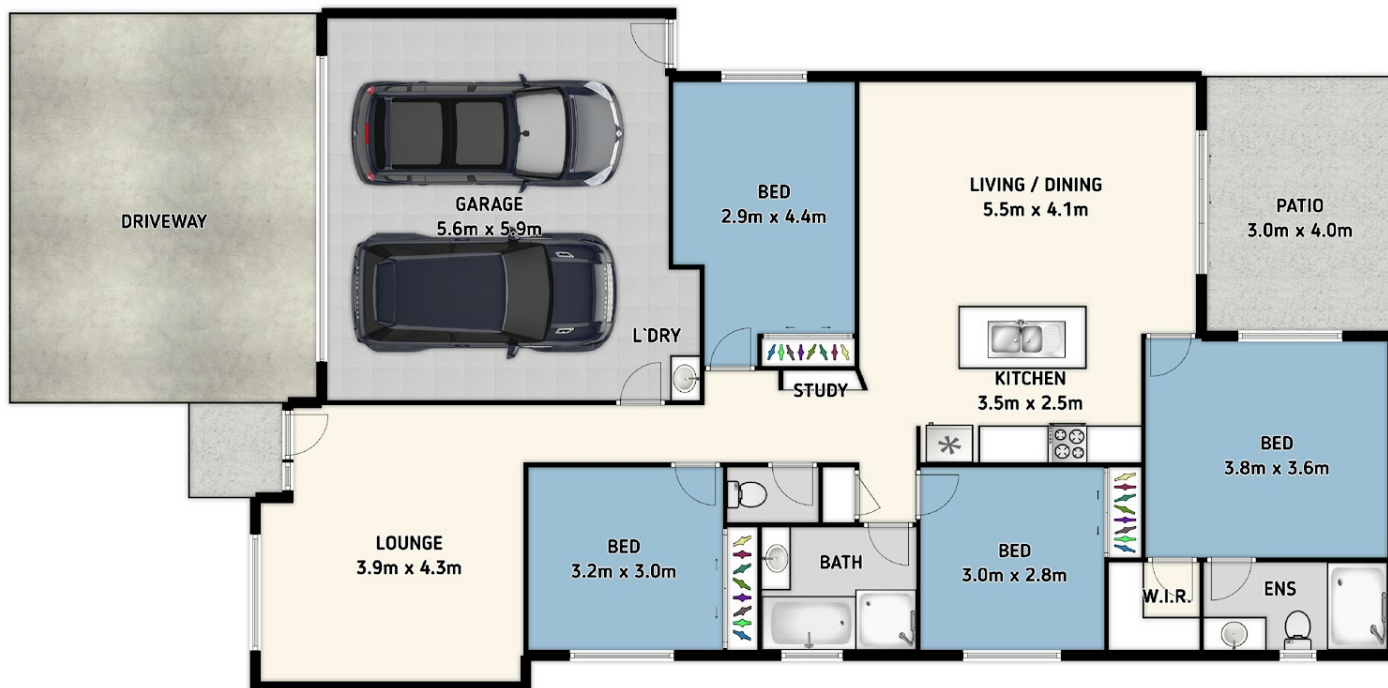
4 BED | 2 BATH | 2 CAR

PRICE:
\$828,750

OPEN FOR INSPECTION:
N/A



Joe Hawes
0405045381
brisbanep@atrealty.com.au
www.atrealty.com.au



6 Cardamom Close, Griffin, QLD 4503

Whilst every attempt has been made to ensure the accuracy of the floor plan, this plan is for illustrative purposes only. All dimensions and fittings are approximate.
 PLAN BY SOLDPHOTOGRAPHY.COM.AU

INTERIOR: 159.3 sqm
 EXTERIOR: 14.4 sqm
 APPROX TOTAL: 173.7 sqm
 LAND: 448m²



Disclaimer: Please note this floor plan is for marketing purposes and is to be used as a guide only. All dimensions are estimates only and may not be exact measurements.