

FOR LEASE

STUNNING UNIT IN PRIME CHERMSIDE LOCATION. DON'T MISS OUT ON THIS 2 BED, 1 BATH GEM!

Welcome to this newly refurbished unit in the heart of Chermshire. This well thought out unit is a perfect blend of modern luxury and convenient living. As soon as you step inside, you'll be greeted by a sense of warmth and comfort, making you feel right at home.

This unit features:

- 2 bedrooms
- 1 bathroom
- 2 split system air-conditioners
- Built-ins
- Freshly painted
- Upgraded kitchen and bathroom
- Balcony
- Single lock-up garage
- Security screens
- Second floor

Located in one of the most sought-after areas of Brisbane, this unit is the epitome of convenience. With its prime location, you'll have easy access to all the amenities you could ever need. From Chermshire Shopping Centre up the road, St. Vincent's and Prince Charles Hospital walking distance away, local schools, parks, and public transport, everything is nearby. You'll never have to travel far for your daily needs or weekend plans.

This stunning unit features two spacious bedrooms, perfect for a small family or a couple. The bedrooms are well-lit and airy, providing a serene and peaceful atmosphere for a good night's sleep. The main bedroom has a large built-in and split system air-conditioning.

The bathroom features high-quality fixtures and fittings, giving it a touch of sophistication.

The unit also boasts a spacious and functional kitchen and the open-plan layout of the living and dining area creates a seamless flow, making it perfect for entertaining guests or spending quality

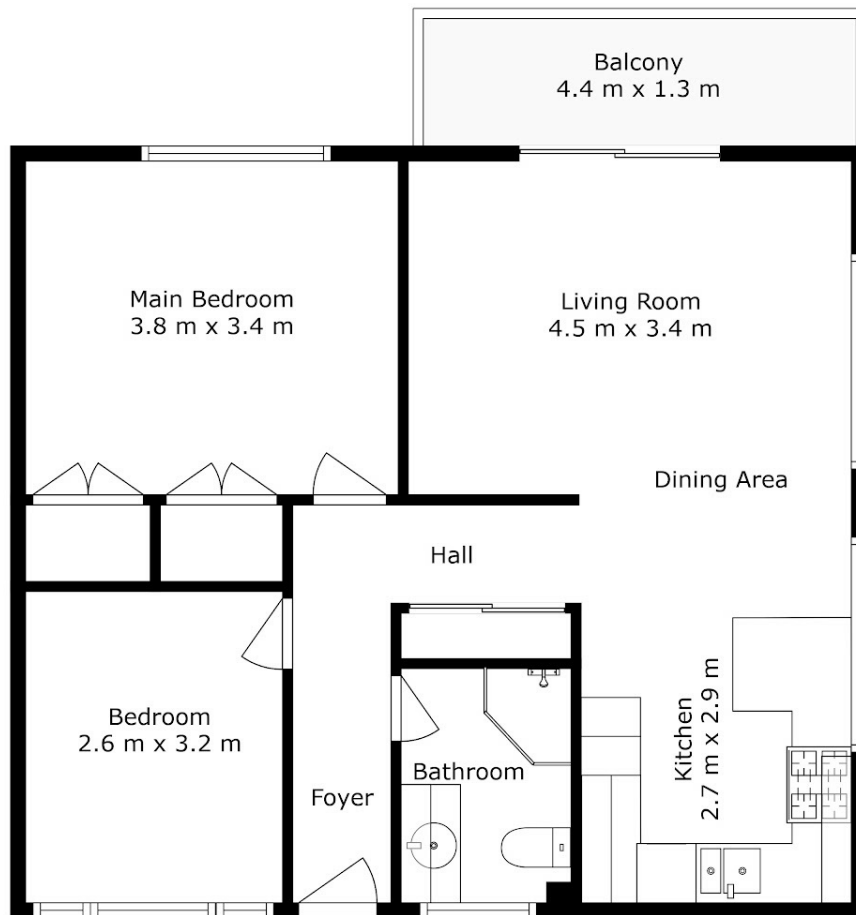
2 BED | 1 BATH | 1 CAR

PRICE:
\$550 per week

OPEN FOR INSPECTION:
N/A



Janice Minihan
0436391146
janicem@atrealty.com.au
www.atrealty.com.au



4/507 Rode Road, Chermside

Total Area: Approx. 69 m²

Every attempt has been made to ensure the accuracy of these plans, however they should be used as a guide only. Prospective purchasers should make their own enquiries



Disclaimer: Please note this floor plan is for marketing purposes and is to be used as a guide only. All dimensions are estimates only and may not be exact measurements.

