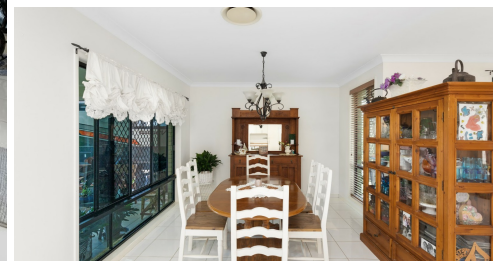


10 CHERIMOYA COURT, GLASS HOUSE MOUNTAINS, QLD, 4518



FOR LEASE

DUCTED AIRCON FAMILY HOME IN QUIET CUL DE SAC

Gray Property Services would like to present this lovely 4 bedroom family home only minutes from the local schools, shops and amenities. This is a lowset brick home in Glass House Mountains with four bedrooms, two bathrooms and a study, this property is great for a family.

Main features:

- * 4 bedrooms , 2 bathrooms
- * Master bedroom with ensuite
- * Modern kitchen , dishwasher, and great storage
- * Open plan living area,
- * Ducted Air-con + ceiling fans
- * Large insulated covered back patio
- * Large carport side of home for Caravan or boat
- * Solar panel system
- * Double lock-up garage with remote access
- * Fully fenced 973m2 block

This family home is nestled at the end of a quiet cul-de-sac in Glass House Mountains. Close to Mount Ngungun , you really are amongst the mountains.

TO INSPECT OR APPLY:

Applications must be submitted before we can organise a viewing

To register (or apply) for this property please click on the get in touch button and send your details to our agency. You'll receive an email back with instructions on how to register and apply via our website and booking service.

We do NOT accept 1Form, Ignite, 2Apply or any other online type of tenancy application form. You must apply using the the provided application link sent to you once you enquire.

It is an agency and owner policy that each person over the age of 18yrs old wishing to live at the

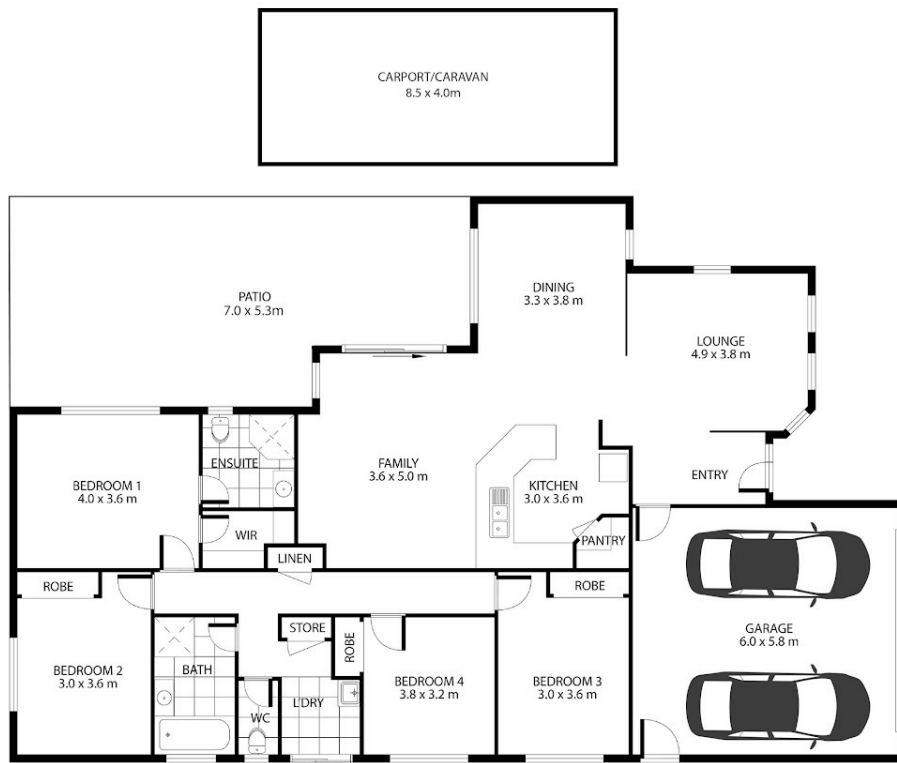
4 BED | 2 BATH | 3 CAR

PRICE:
\$790 per week

OPEN FOR INSPECTION:
N/A



Cassandra and Cameron Gray
0431316679
cgray@atrealty.com.au
www.atrealty.com.au



 10 Cherimoya Court, Glass House Mountains

Artist Impression ONLY. Every attempt to has been made too ensure the accuracy of this floor plan. All measurements are approximate and we take no responsibility for any error or mis-statement. This plan should only be used for real estate purposes for a prospective buyer. FLOOR PLAN BY ELITE MEDIA GROUP | elitemediasunshinecoast.com.au

Disclaimer: Please note this floor plan is for marketing purposes and is to be used as a guide only. All dimensions are estimates only and may not be exact measurements.