



SOLD

THE PERFECT FAMILY HAVEN

Dont miss the First Home Open - 10am Saturday 3rd August.

End Date Sale
Offers close 4pm Monday 19th August 2024 (unless sold prior)

Nestled on a spacious 809 square metre block behind a white picket fence, this delightful 2015 built home offers an exceptional living experience in a trendy and popular area. With four generous bedrooms, two modern bathrooms and three separate living areas, it is perfect for families seeking both comfort and style.

Inside, you'll discover high-quality finishes. The stunning kitchen features a bifold servery window and an oversized bifold door connecting the lounge to the outdoor area seamlessly. The thoughtful layout includes separate zones for parents and children, ensuring everyone has their own space to relax and unwind. The heart of the home is the open plan kitchen-family-dining area with a high vaulted ceiling designed for family living.

The beautifully zoned backyard features a solar-heated pool, an established veggie patch, fruit trees, and plenty of lawn, which have been created with countless hours of love and preparation. The inviting outdoor area is ideal for year-round entertaining and creating memorable moments with family and friends.

Additional features include a two-car lock-up garage with direct access to the house and not to be forgotten a full-width side access to the backyard, perfect for parking a caravan or boat or future plans.

This home has everything you need and could want to live the ideal family lifestyle.

- Extras
- Ducted Air Conditioning
 - King Sized Master Suite
 - Under-Floor Heating to the Recently Refreshed Ensuite
 - Alarm System with CCTV
 - Minutes to the Vic Park Entertainment Strip
 - Close to Shopping Centres

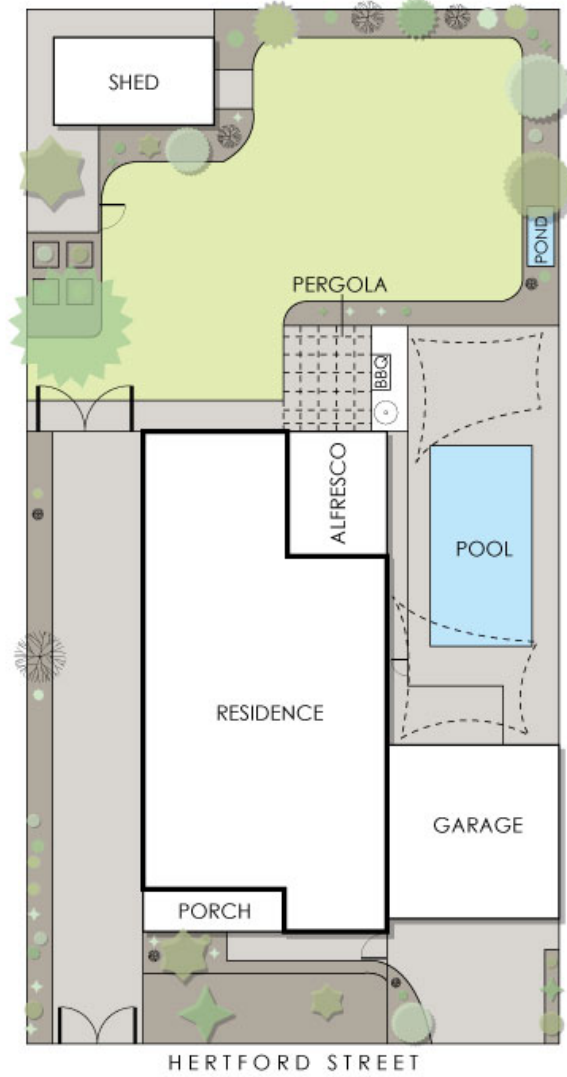
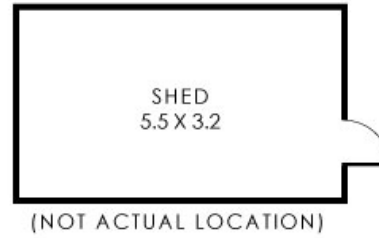
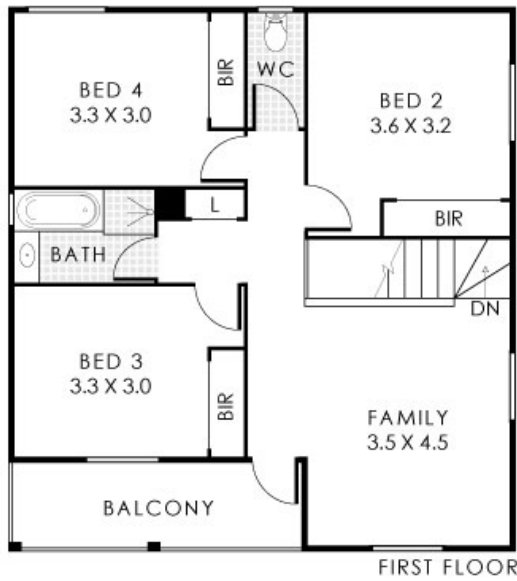
4 BED | 2 BATH | 2 CAR

PRICE:
\$1,700,000

OPEN FOR INSPECTION:
N/A



Jarrad Eaton
0403267251
jarrad@eatonproperty.com.au
eatonproperty.com.au



Disclaimer: Please note this floor plan is for marketing purposes and is to be used as a guide only. All dimensions are estimates only and may not be exact measurements.

Residence 212m² | Alfresco 16m² | Garage 36m² | Porch 8m² | Balcony 8m²
Total Area 280m²

Jarrad Eaton
0403267251
 jarrad@eatonproperty.com.au
 eatonproperty.com.au

This floor plan is for illustration purposes only to show the layout of the property. Whilst every effort has been made to ensure the accuracy of this floor plan, all measurements and any other details shown are an approximate interpretation. We do not accept any liability for any errors, omissions, misrepresentation or any other information shown on this floor plan. Not to be used for any other purpose.
 www.crealityrealestate.com.au