



SOLD

RENOVATED

All internal work will be completed before the first open home, so you'll only need to move in your furniture.

You'll be impressed by the custom bathrooms, featuring unique purpose-cut tiles on the ensuite walls that showcase the exceptional attention to detail. A brand-new kitchen completes this stunning home.

With two indoor living areas and a large patio, this easy-living family home sits on a flat block with a fully fenced backyard, perfect for kids to play safely.

Located in the heart of Arundel, you're surrounded by local shopping, outlet stores, big-box retailers, schools, two hospitals, Griffith University, clubs, and a golf course, with quick access to Southport and Surfers Paradise. Plus, there are two convenient routes to the M1. You won't find a better location than this!

- 3 bedroom
- 2 bathroom
- Double lock up garage
- Flat 600m2 block
- Fully fenced back yard
- Patio/outdoor entertaining
- Garden shed
- 10.5kw of solar panels to an 8kw inverter
- Minutes to Shops/Harbour Town/Schools

Disclaimer:
We have in preparing this advertisement used our best endeavours to ensure the information contained is true and accurate, but accept no responsibility and disclaim all liability in respect to any errors, omissions, inaccuracies or misstatements contained. Prospective purchasers should

3 BED | 2 BATH | 2 CAR

PRICE:
\$1,000,000

OPEN FOR INSPECTION:
N/A

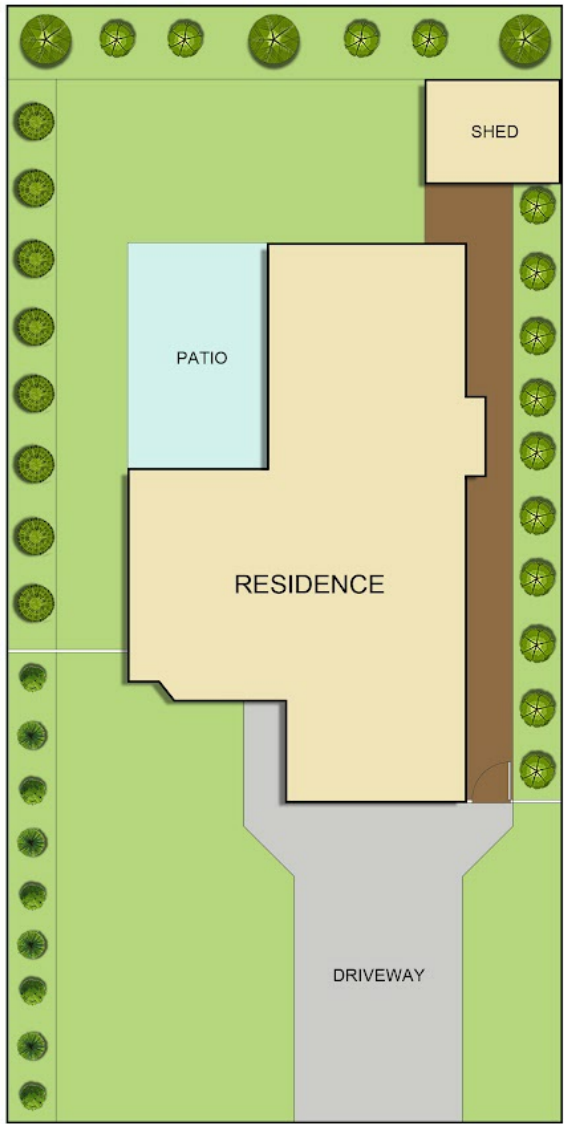


Tony Brown
0418961500
tonybrown@atrealty.com.au
www.atrealty.com.au

CONTACT:
TONY BROWN
 tonybrown@realty.com.au
 0418 961 500
 @realty



FLOOR PLAN



SITE PLAN

Disclaimer: Please note this floor plan is for marketing purposes and is to be used as a guide only. All dimensions are estimates only and may not be exact measurements.

All buyers must do their own investigations into the accuracy of these plans.

6 Range Court, Arundel, Qld, 4214

Tony Brown
 0418961500
 tonybrown@atrealty.com.au
 www.atrealty.com.au

