



SOLD

MASSIVE HOME IN SOUGHT AFTER LOCATION ON CORNER BLOCK!!

Perfectly located in the heart of lawnton, with schools, shops, and public transport just a stone's throw away, you'll have everything you need at your doorstep. With the new University campus and petrie train station just 1.5km away this home is also perfect for an eager investor looking to get into the market with a low maintenance property on a decent size block ,605m2 corner block to be exact

Features Include:

- Polished timber floors
- 3 Large bedrooms
- Stunning front deck overlooking park perfect for a morning coffee
- Bathroom with separate toilet and bath!
- open plan kitchen living and dining
- Internal stairs with built in rumpus room/bar downstairs
- Seperate bathroom and laundry downstairs!
- Large 605m2 usable corner block with 2 x gardens sheds
- SOLAR!
- Walk to all ammenities
- 1.5km walk to train station or UNI!
- 700m walk to Lawnton Train station!

So why wait? Your dream home is waiting for you. Don't miss this opportunity to make it yours. Contact us today to arrange a private inspection and start living the life you've always dreamed of. Don't just buy a house, buy a home. Your new beginning starts here.

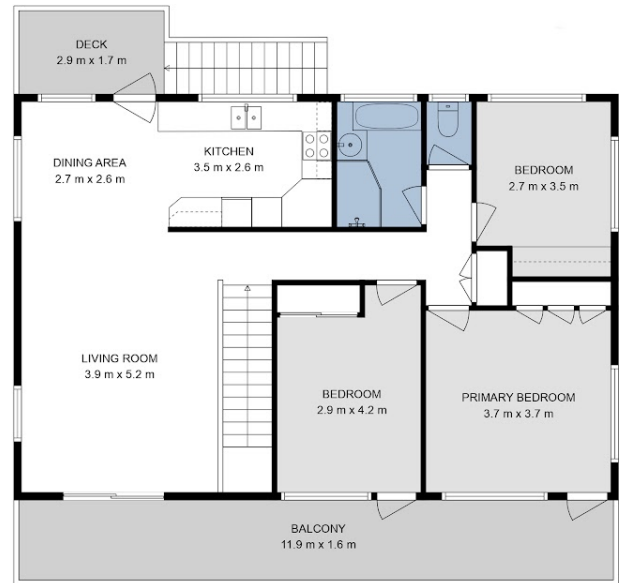
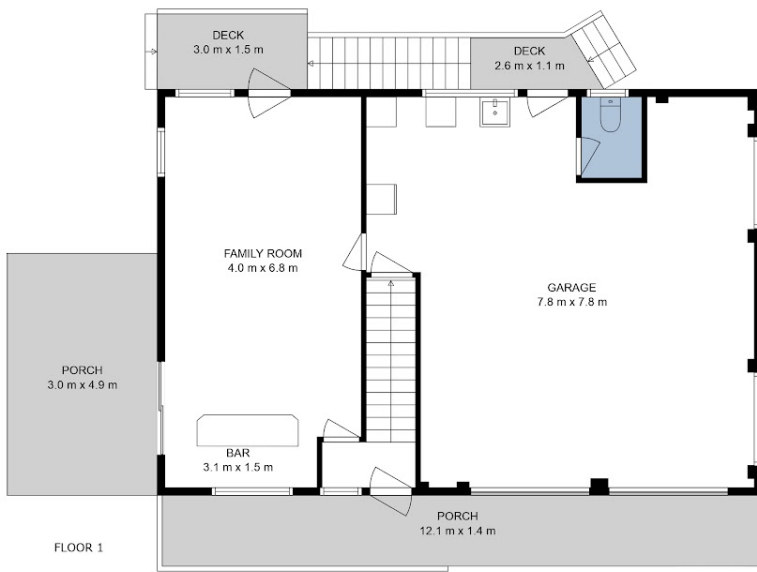
3 BED | 2 BATH | 2 CAR

PRICE:
\$760,000

OPEN FOR INSPECTION:
N/A



Paige Creedon
0413402110
paige@creedonpropertygroup.com
creedonpropertygroup.com



This floor plan is intended to give a general indication of the layout only. Sizes & dimensions are approximate, actual may vary.



Disclaimer: Please note this floor plan is for marketing purposes and is to be used as a guide only. All dimensions are estimates only and may not be exact measurements.