



SOLD

CHARMING AND CONVENIENT

Wright Way Realty Jervis Bay presents a classic opportunity for those looking for a charming cottage style home, holiday home, or investment property. Located in St Georges Basin, it is only 250 metres to the water's edge, and just 300 metres to shops, medical facilities, cafe's and the local hotel.

- @ Development potential to exceptionally expand on current water views
- @ Centrally located in the Bay & Basin and only 5.5k's to Vincentia's marketplace
- @ Just a few hundred metres to shops, medical facilities, Cafe's and the local hotel
- @ 3 Generous bedrooms, solid timber kitchen, and large washroom with own bath
- @ Spacious north facing lounge room and deck ensure your living spaces remain light filled and airy
- @ The huge covered outdoor pergola area is perfect for entertaining family and friends
- @ Gently sloping 607sqm parcel, zoned R2 low density residential with a double garage and single carport
- @ A wide 18 plus metre frontage is perfect for future development opportunities
- @ Currently used as a rental investment property, this home just requires YOU!

@ Call Glenn right now and make this one yours!

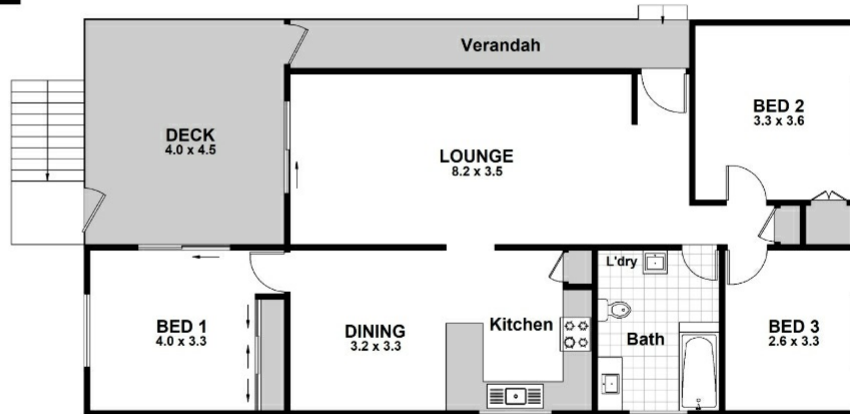
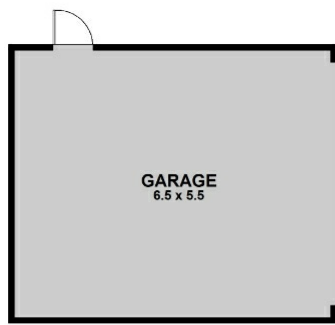
3 BED | 1 BATH | 3 CAR

PRICE:
\$590,000

OPEN FOR INSPECTION:
N/A



Glenn Wright
0408120866
glenn.wright@atrealty.com.au
Wright Way Realty



83 Island Point Rd. St GEORGES BASIN



Scale is in Metres & indicative only & dimensions are only approximate.
 The information contained & gathered herein is we believe from sources to be reliable.
 We can not guarantee it's accuracy & persons should rely on their own enquiries.

Disclaimer: Please note this floor plan is for marketing purposes and is to be used as a guide only. All dimensions are estimates only and may not be exact measurements.