



## FOR SALE

### ELEVATED 4 BED SPACIOUS VILLA –QUITE CUL-DE-SAC LOCATION-FAMILY RESIDENCE!!

#### UNDER CONTRACT

Designed over three levels this impressive contemporary villa will interest those looking for a functional family layout with a good separation of living areas.

There are plenty of choices, both internal and external, for the growing or extended family to enjoy from the three living areas to the large, open study located on the upper level. There is a large covered external entertaining area with an outdoor kitchen and BBQ which continues on to the pool and back garden.

The centrally located kitchen area overlooks the dining area and lounge and looks out onto the entertaining and pool areas of the home.

All four bedrooms are large, two of them with ensuites and walk in robes, one is on the ground level of the home. The very roomy master suite and two other outsized bedrooms are upstairs. The house has a spacious, well-designed layout, contemporary finishes, light feel and excellent elevated position which will certainly impress.

The home boasts a favourable rear Northerly aspect which ensures the home enjoys an abundance of light throughout the day and the elevation certainly catches the sea breezes in summer.

The home has recently been treated to some added extras like balcony refurbishment, external painting, Solar panels etc and is certainly a delight to present.

Having sold many villas within our resort over the years, 5014B certainly does offer a cut above with regards to elevation, options, size and is in a quiet position.

#### Main Features:

- 4 substantial bedrooms two with ensuites and walk in robes.
- Main bedroom's ensuite has a dual shower, one is a huge rain shower.
- Multiple spacious living areas inside and out.

4 BED | 4 BATH | 2 CAR

#### PRICE:

Contact Agent

#### OPEN FOR INSPECTION:

N/A



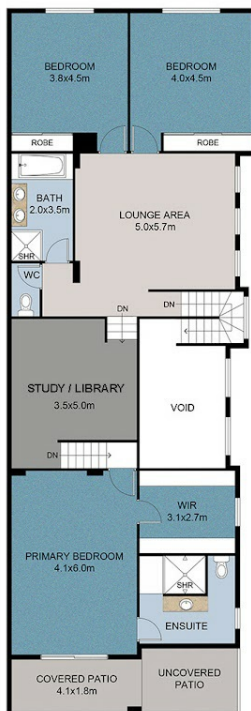
**Neil Paton**  
**0419679155**

neilpaton@atrealty.com.au

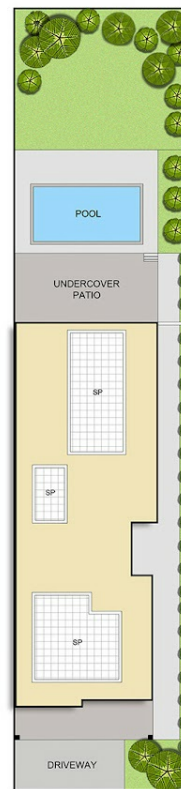
[www.atrealty.com.au](http://www.atrealty.com.au)



GROUND FLOOR PLAN



UPPER FLOOR PLAN



This floor plan including furniture, fixture measurements and dimensions are approximate and for illustrative purposes only. Pro Vision Image gives no guarantee, warranty or representation as to the accuracy and layout. All enquiries must be directed to the agent, vendor or party representing this floor plan.

5014B Riverwood Grove

Neil Paton  
0419 679 155



2 4 3



Disclaimer: Please note this floor plan is for marketing purposes and is to be used as a guide only. All dimensions are estimates only and may not be exact measurements.