



SOLD

STUNNING TWO-BEDROOM TOWNHOUSE IN A PRIVATE TROPICAL SETTING

Centrally Located in a Boutique Group of Six tightly held townhouses, this gem really stands out from the rest

Experience the best of tropical living in this immaculate, newly upgraded two-bedroom, two-bathroom townhouse. No need to live in a ghetto of units, this affordable property offers unparalleled privacy and tranquility nestled in a quiet crescent with minimal traffic and no multi dwellings. With no walk through traffic you can feel very safe here.

Featuring-

- Private carport with automatic roller door and secure entry to your home perfect to stay dry in the wet season
- Private Courtyard: A secluded outdoor space for relaxation and entertainment, room for your fur friends too.
- Enjoy peace and quiet with no neighboring units.
- Centrally located, close to the gym, Homemaker Village, and Nightcliff Markets. A few minutes to the beach, newly upgraded Bagot Oval, and the airport with less than 10-minute drive to both Casuarina and the city.
- Newly Upgraded Kitchen: beautifully appointed with high mounted oven, waterfall benchtop island with recess to seat 4 people comfortably, plenty of drawer storage. Classic and timeless finishes.
- Freshly painted and renovated, this townhouse has been thoughtfully renovated for a fresh, contemporary feel.
- Ample Storage: Built-in wardrobes in every room, internal laundry with plenty of shelving and additional under the stairs storage
- Private Balconies: Enjoy your morning coffee on your private balconies, with beautiful views of the tropical surroundings.
- Pet-Friendly: Pets are welcome with approval from the body corporate.

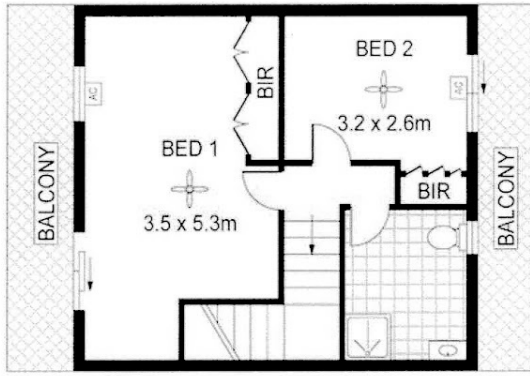
2 BED | 2 BATH | 1 CAR

PRICE:
\$396,000

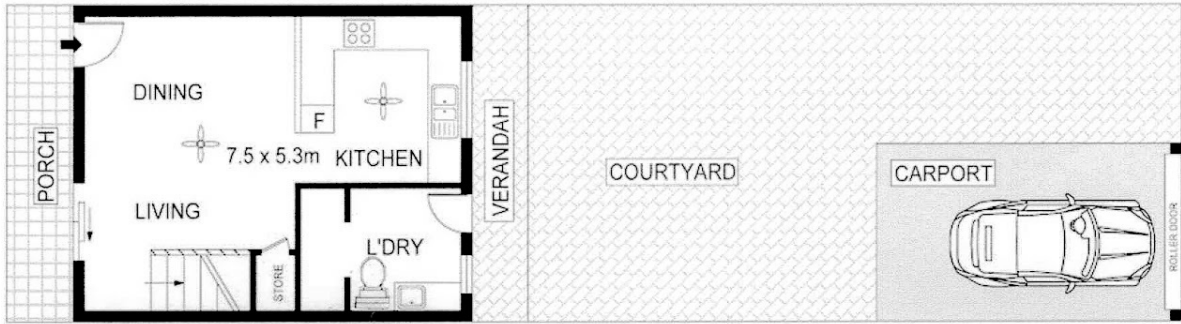
OPEN FOR INSPECTION:
N/A



Trish McClelland
0418612640
trish.mcclelland@atrealty.com.au
www.atrealty.com.au



TOP FLOOR



GROUND FLOOR



Scale in metres Indicative only. Dimensions are approximate. All information contained herein is gathered from sources we believe to be reliable. However we cannot guarantee its accuracy and interested persons should rely on their own enquiries

INT : 80m²

4/30 Brawshaw Terrace, Millner

Disclaimer: Please note this floor plan is for marketing purposes and is to be used as a guide only. All dimensions are estimates only and may not be exact measurements.