



**SOLD**

## SPACIOUS FAMILY HOME, IN A PEACEFUL CUL-DE-SAC, WITH A LARGE BLOCK OF LAND

Beautiful, spacious family home located in a peaceful cul-de-sac. This immaculately presented home comes with a range of attractive features:

Generous floorplan, open plan layout with two separate living areas with air conditioner, separate dining, modern kitchen with plenty of storage, stainless steel appliances, gas cooktop, tiled throughout the living and dining area.

Three good-sized bedrooms, master bedroom with ensuite, walk-in robe, including air conditioner, also air conditioned in the back bedroom. This property also features a family bathroom with a separate toilet, security screens throughout, and crim-safe doors.

Perfect for entertaining, featuring a spacious covered outdoor area, a fully fenced backyard with tree-line views of the Anita St Bushland Reserve, a single remote-controlled garage, and a drive-through garage. There is plenty of space for adding a swimming pool for those hot summer days.

Close to Redland Bay Golf Course, the schools, shopping centre, medical amenities, boat ramps, and the shores of Moreton Bay

### Features:

- An open kitchen, dining, and family room
- Stylish kitchen with stainless steel appliances and a gas cooktop
- Two separate living areas, both with air-conditioning
- Separate dining
- A master bedroom with a walk-in robe, ensuite, and air conditioning
- All bedrooms with built-in wardrobes & fans
- A large undercover outdoor entertainment area surrounded by low-maintenance gardens
- Solar panels and garage with drive-through access
- 3x3 Garden Shed
- A fully fenced yard with ample space to add a swimming pool

Nearby schools :

**3 BED | 2 BATH | 2 CAR**

**PRICE:**  
**\$812,000**

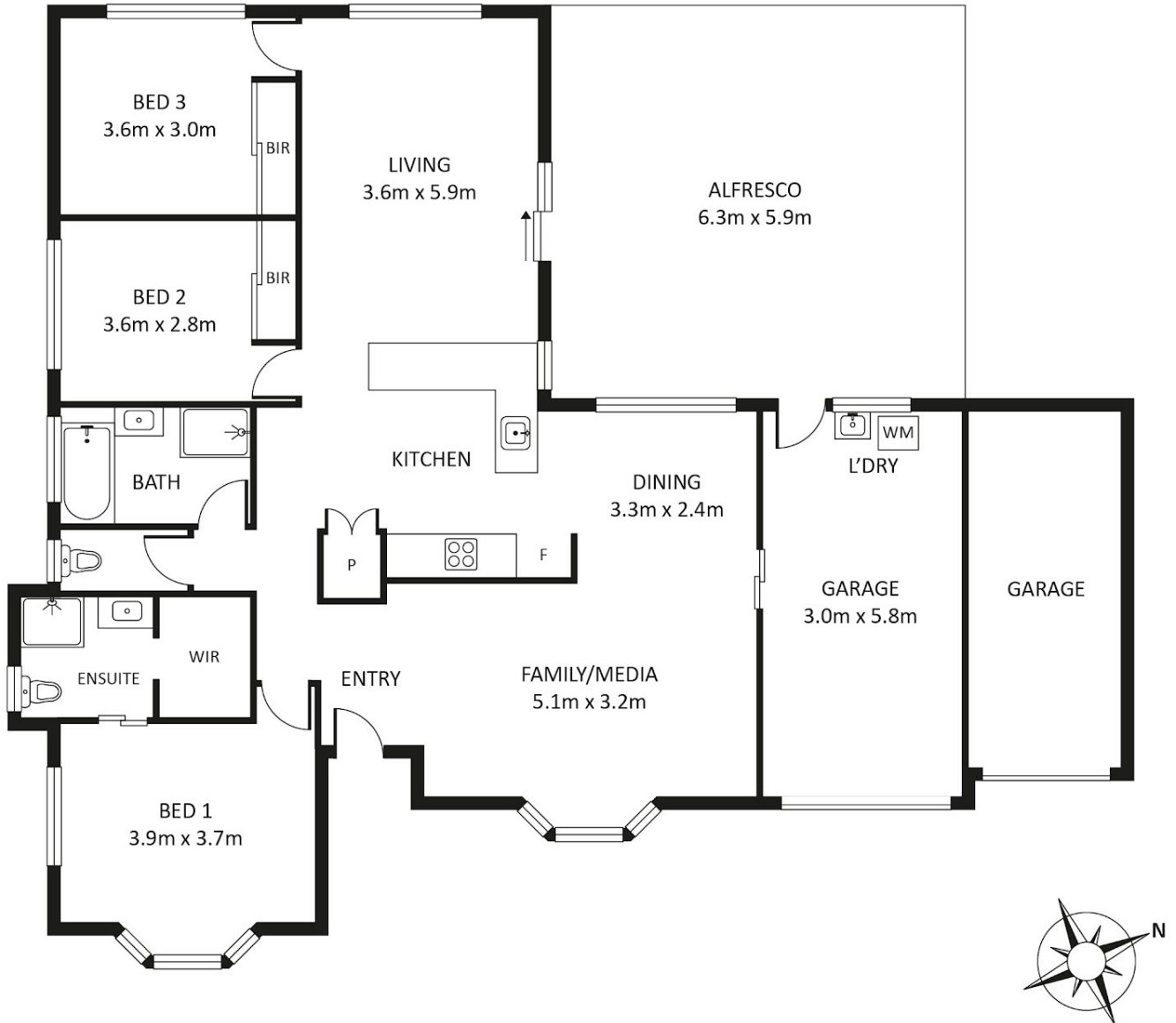
**OPEN FOR INSPECTION:**  
**N/A**



**Karen Moke**  
**0406521370**  
karenmoke@atrealty.com.au  
[www.atrealty.com.au](http://www.atrealty.com.au)

# 4 Buggy Place Redland Bay

3  | 2  | 2  |



Disclaimer: Floor plan measurements are approximate and for illustrative purposes only.

Disclaimer: Please note this floor plan is for marketing purposes and is to be used as a guide only. All dimensions are estimates only and may not be exact measurements.