

SOLD

FAMILY HOME IN QUITE CUL-DE-SAC LOCATION

Looking for Spacious Family Living with an Entertainer's Haven? Then look no further. A large backyard and so close to everything. This home blends beauty with modern-day comforts, enhanced by gardens, walkways, parks and a convenient walk-to-everything. Meticulously presented and nothing to do but move in.

Inside Features:

- Wood laminated floors throughout all living areas
- Large separate living and dining areas ideal for large families
- Modern and spacious renovated kitchen with plenty benchtop space , splashback, Gas cooktop piped from road , oven and dishwasher
- 3 Carpeted bedrooms all with WIR and 1 with wooden laminated floors
- Spacious master with ensuite featuring double vanity, toilet, and shower and spa bath
- Blinds throughout
- Plenty storage throughout
- Split air conditioning systems
- Renovated family bathroom with vanity, shower, and bathtub
- Separate toilet
- Renovated laundry

Features to Love Outside:

- 9.9 kw solar
 - 2.7ft ceilings
 - Gas hot water system
 - Fully enclosed entertaining area for all year entertaining
 - Spacious 836m2 block with large back yard
 - Landscaped gardens
 - Parks and Walkways
 - Spacious lock up storage on lower level with own external entry. Worksop, Cold room. Includes a separate lock up area. Must be seen.
 - Double garage with off street parking
 - Easy care garden
- Lower level:

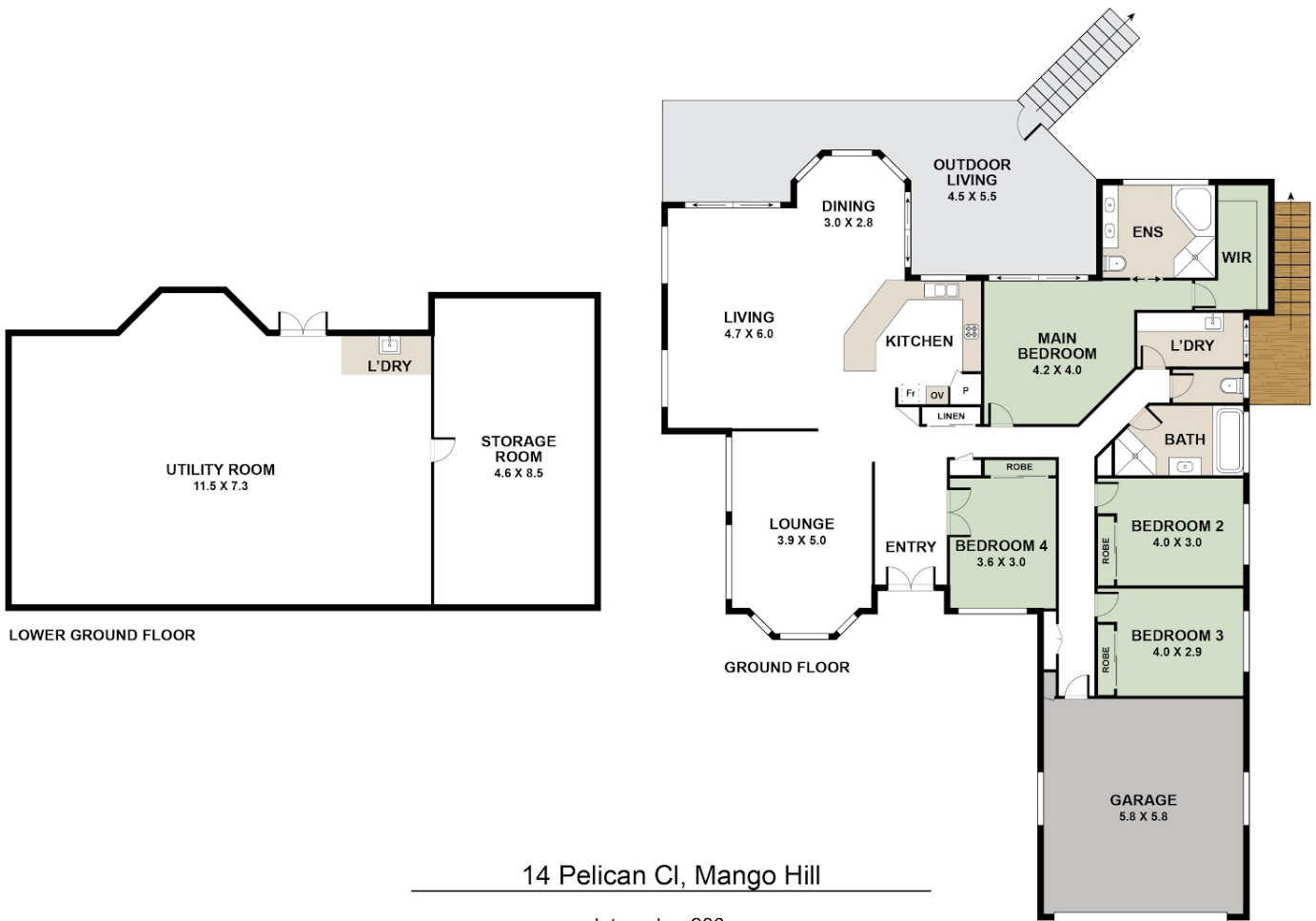
4 BED | 2 BATH | 4 CAR

PRICE:
\$1,020,000

OPEN FOR INSPECTION:
N/A



Beverley Gibbons
0420807083
 beverley.gibbons@atrealty.com.au
www.atrealty.com.au



14 Pelican Cl, Mango Hill

Internal: 266 sqm
 External: 134 sqm
 Total Area: 400 sqm



Every attempt has been made to ensure the accuracy of this floor plan. Measurements of rooms and any other items are approximate. This plan is for illustrative purposes only and no responsibility is taken.

Disclaimer: Please note this floor plan is for marketing purposes and is to be used as a guide only. All dimensions are estimates only and may not be exact measurements.