



# FOR LEASE

## 3 BEDROOM GARDEN APARTMENT, DOUBLE GARAGE - ULTRA CONVENIENT LOCATION

This spacious three-bedroom ground-floor apartment features a well-designed house-like layout, providing ample space for living and entertaining. Features include:

- Secure building with intercom access
- Master bedroom features ensuite and walk-in robe
- Two bedrooms with mirrored built-in wardrobes
- Bright and spacious open-plan living area with split system air conditioning
- Separate tiled eat-in dining area
- Oversized gas kitchen with stainless steel appliances, dishwasher, and ample storage space
- Alfresco entertaining balcony with garden area
- Main bathroom includes a corner bath
- Internal laundry equipped with dryer
- New blinds throughout
- Undercover, secure double lock-up garage with lift access to the apartment
- Well-maintained complex with community in-ground swimming pool and BBQ area
- Located on a quiet street with a park and playground opposite
- Short stroll to Castle Towers, Metro train station, medical centres, restaurants, and Castle Hill Primary & High Schools
- Easy access to City and Parramatta buses, M2 motorway, and M7 Motorway

3 BED | 2 BATH | 2 CAR

PRICE:  
\$800 per week

OPEN FOR INSPECTION:  
N/A

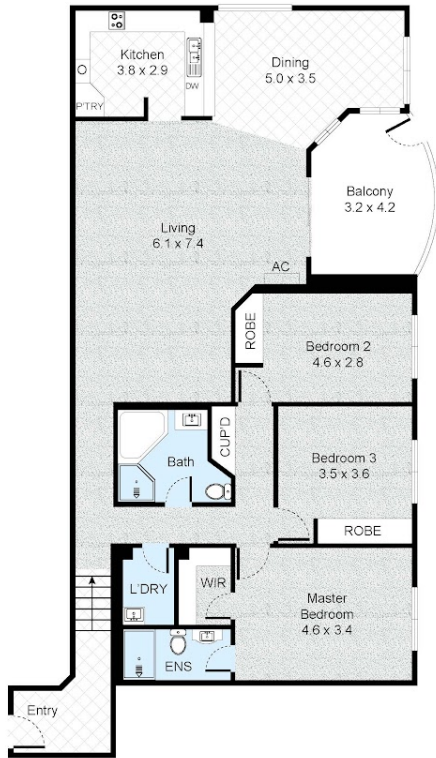


**Gavin McCutcheon**  
**0413686969**  
gavin@atrealty.com.au  
[buyingsellingrenting.com.au](http://buyingsellingrenting.com.au)

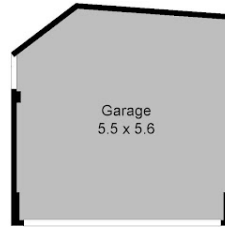
# Unit 2, 19 Sherwin Avenue, Castle Hill



3 Bed 2 Bath 2 Car



FLOOR PLAN



(Not In Position)

GARAGE

Internal : 144m<sup>2</sup>  
External : 41m<sup>2</sup>



All information contained herein is gathered by Little Hinges. Whilst the scanning technology is highly reliable, we cannot guarantee its accuracy and interested parties should rely on their own enquiries.

Disclaimer: Please note this floor plan is for marketing purposes and is to be used as a guide only. All dimensions are estimates only and may not be exact measurements.

Gavin McCutcheon  
0413686969  
gavin@atrealty.com.au  
buyingsellingrenting.com.au

