



SOLD

TERRIFIC HOME ON TASMAN

Wright Way Realty Jervis Bay presents a brand new opportunity to secure this one owner family home, conveniently located in the sought after St Georges Basin region and only minutes to the water's edge. Built in 2009, has views to the water, and is much grander than it first appears!

- @ Desirable north facing aspect with established, low maintenance gardens
- @ Spacious modern kitchen with an abundance of bench space to cook up a storm
- @ Seamless flow from the kitchen to dining, and then to outdoor entertaining spaces
- @ Eco-friendly solar panels and solar hot water will ensure save a motza
- @ Four generous sized bedrooms, master suite with ensuite and walk-in-robe
- @ Supersized lounge/living area to share memories with all your family and friends
- @ Main family bathroom is contemporary in style with a separate bath and shower
- @ Double lock-up garage with internal access plus good side access for all your toys
- @ Centrally located near schools, sports facilities, transport, and IGA

Call Glenn right now. Inspection is a must on this one!

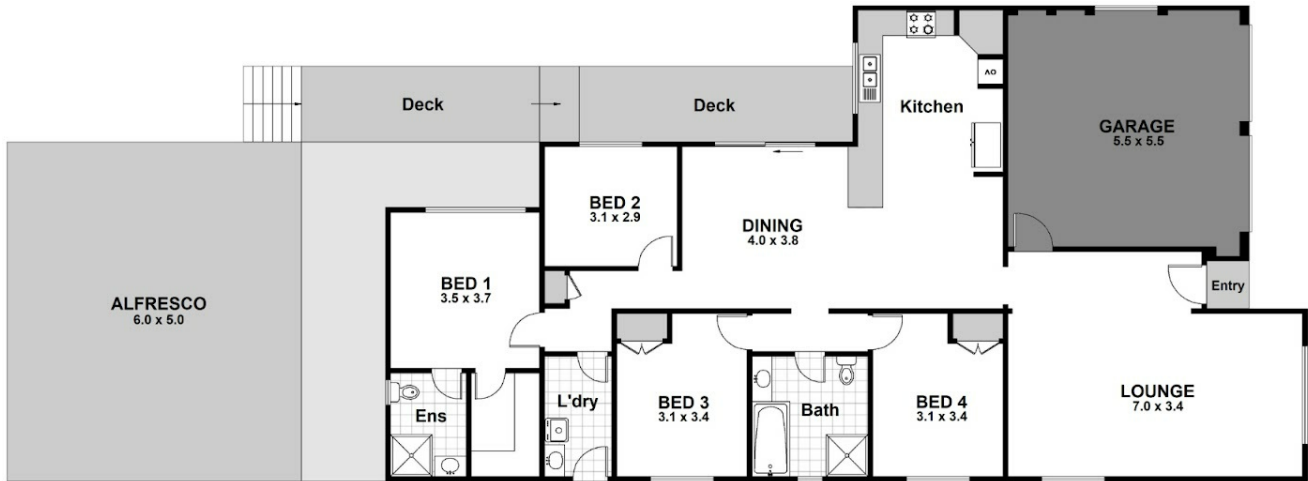
4 BED | 2 BATH | 2 CAR

PRICE:
\$770,000

OPEN FOR INSPECTION:
N/A



Glenn Wright
0408120866
glenn.wright@atrealty.com.au
Wright Way Realty



51 Tasman Road, St GEORGES BASIN



Scale is in Metres & indicative only & dimensions are only approximate.
 The information contained & gathered herein is we believe from sources to be reliable.
 We can not guarantee it's accuracy & persons should rely on their own enquiries.

Disclaimer: Please note this floor plan is for marketing purposes and is to be used as a guide only. All dimensions are estimates only and may not be exact measurements.