



**SOLD**

## LUXURIOUS 2-BEDROOM DESIGNER HOME WITH EXPANSION POTENTIAL -4011 SQM BLOCK- \$660,000

4011 SQM BLOCK WELL PRESENTED SPACIOUS 2 BRM DESIGNER HOME WITH PROVISION FOR EXPANSION -\$660,000.

OPTIONAL Walk-In, Walk-Out: Complete with All Chattels

This magnificent package negotiable which can include all furnishings, whitegoods, and electrical goods, including a computer.

Discover a perfect blend of elegance, comfort, and potential in this immaculately presented 2-bedroom designer home.

Situated on a generous 4011 sqm block in a quiet cul-de-sac, this stunning property built in 2021 by a reputable local builder offers an unparalleled living experience on the Atherton Tablelands. With provisions to easily add extra rooms, this home is an astute investment for discerning buyers seeking both luxury and opportunity.

### Key Features

- Modern Architectural Design: Spanning 213 sqm, this home boasts bluegum hardwood floors throughout, with tiled floors in wet areas, creating a seamless and stylish living space.
  - Open-Plan Living: The spacious open-plan layout features vaulted ceilings and insulated walls, enhancing comfort and energy efficiency.
  - Generous Bedrooms: Two well-appointed bedrooms, each with built-in wardrobes and two sets of windows or sliding doors, offer ample natural light and ventilation.
  - Expansive Deck: A 50 sqm north-facing hardwood timber deck with roller blinds provides stunning views of Walkamin and Mareeba, perfect for entertaining or relaxing.
  - Functional Storage: Enclosed and lockable storage under the house ensures ample space for all your belongings.
  - Sophisticated Drainage: Equipped with half-round gutters, rain-heads, and a comprehensive stormwater drainage system, the property efficiently manages wet season runoff.
  - Convenient Carport: A large 2-car carport with storage and weatherproof access to the house, including wheelchair accessibility via a wider backdoor.
- Premium Comfort and Efficiency

2 BED | 1 BATH | 2 CAR

PRICE:  
\$665,000

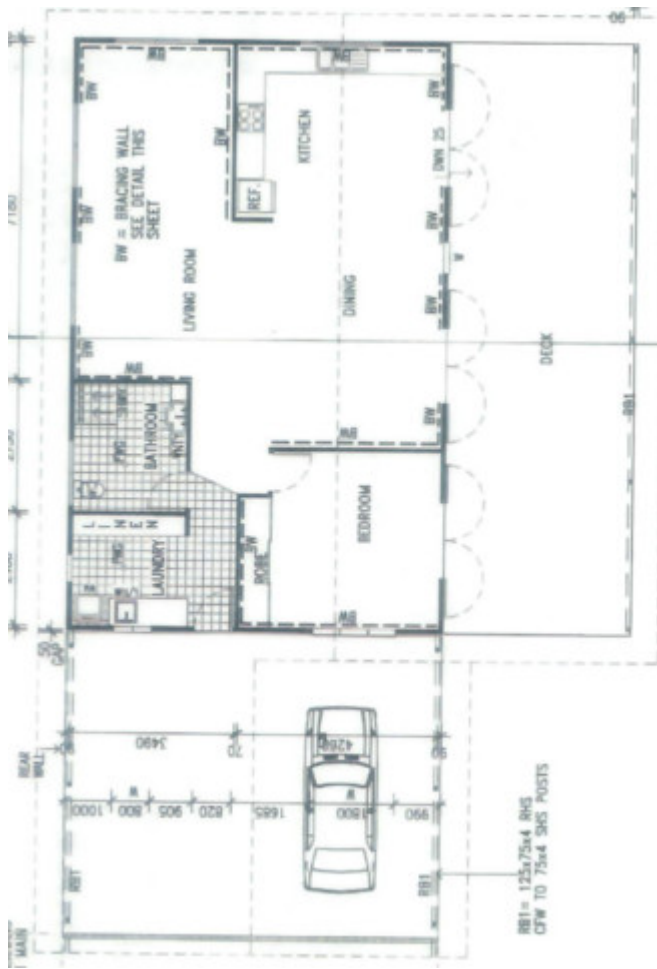
OPEN FOR INSPECTION:  
N/A



**Jean Laterre**  
0437696969

jean.ccr@atrealty.com.au

[www.atrealty.com.au](http://www.atrealty.com.au)



Disclaimer: Please note this floor plan is for marketing purposes and is to be used as a guide only. All dimensions are estimates only and may not be exact measurements.