



FOR SALE

BRAND-NEW BEAUTY WITH STREET FRONTAGE

Exhibiting a commitment to excellence with its streamlined, single-level floorplan, meticulous fit-out and high-quality finishes, this brand-new, individually-titled residence with street frontage sets the standard for superior, low maintenance living.

Highlighted by 2.7-metre-tall ceilings with LED downlights, and adorned with stylish vinyl flooring, soft carpet and sleek tiling, this home offers an incredible level of comfort.

Designed to seamlessly blend the indoor and outdoor realms, this home's spacious open-plan domain opens via sliding stacker doors to a paved alfresco area, set within a beautifully landscaped garden. A chic kitchen is centrally placed to effortlessly service these spaces, featuring a full suite of SMEG appliances (including a 900mm induction cooktop), subway tile splashbacks and a stone waterfall-edge breakfast bar. For sleep and retreat, there are three bedrooms and two floor-to-ceiling tiled bathrooms. The front master suite boasts a walk-in wardrobe and an ensuite, while the two other bedrooms share the use of the family bathroom and separate toilet.

Complete with complementary inclusions, this home also has double-glazed windows, ducted heating and refrigerated air conditioning, a heat pump hot water unit, linen press storage, a water tank with a pump, plus a remote double garage that has a rear laundry and internal house entry.

Set to spoil its future occupants with convenience, this home is situated in a no-through road, within walking distance of bus stops, trails, reserves, sporting ovals, Dorset Golf Course, childcare and medical centres, local shops and eateries, as well as Woolworths and Aldi supermarkets. Only a short commute to

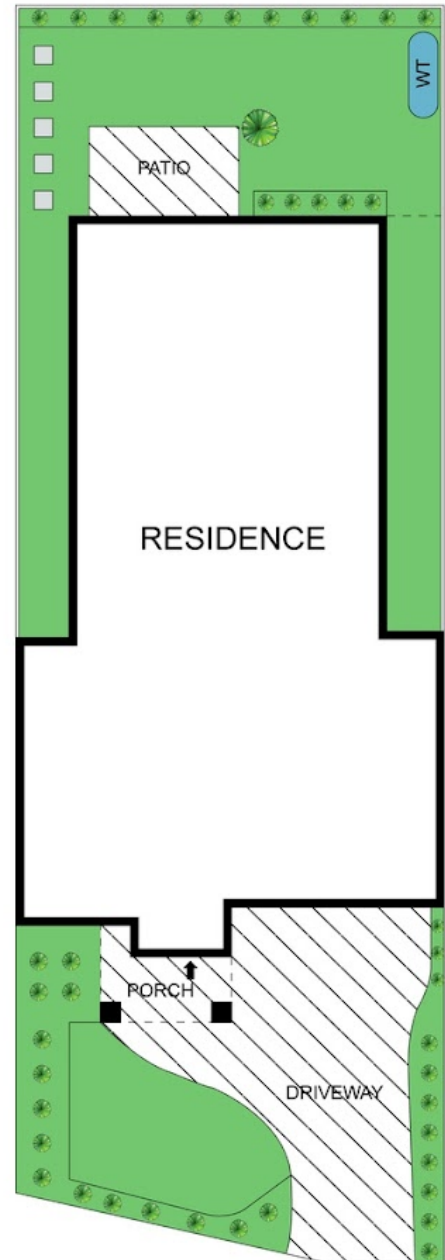
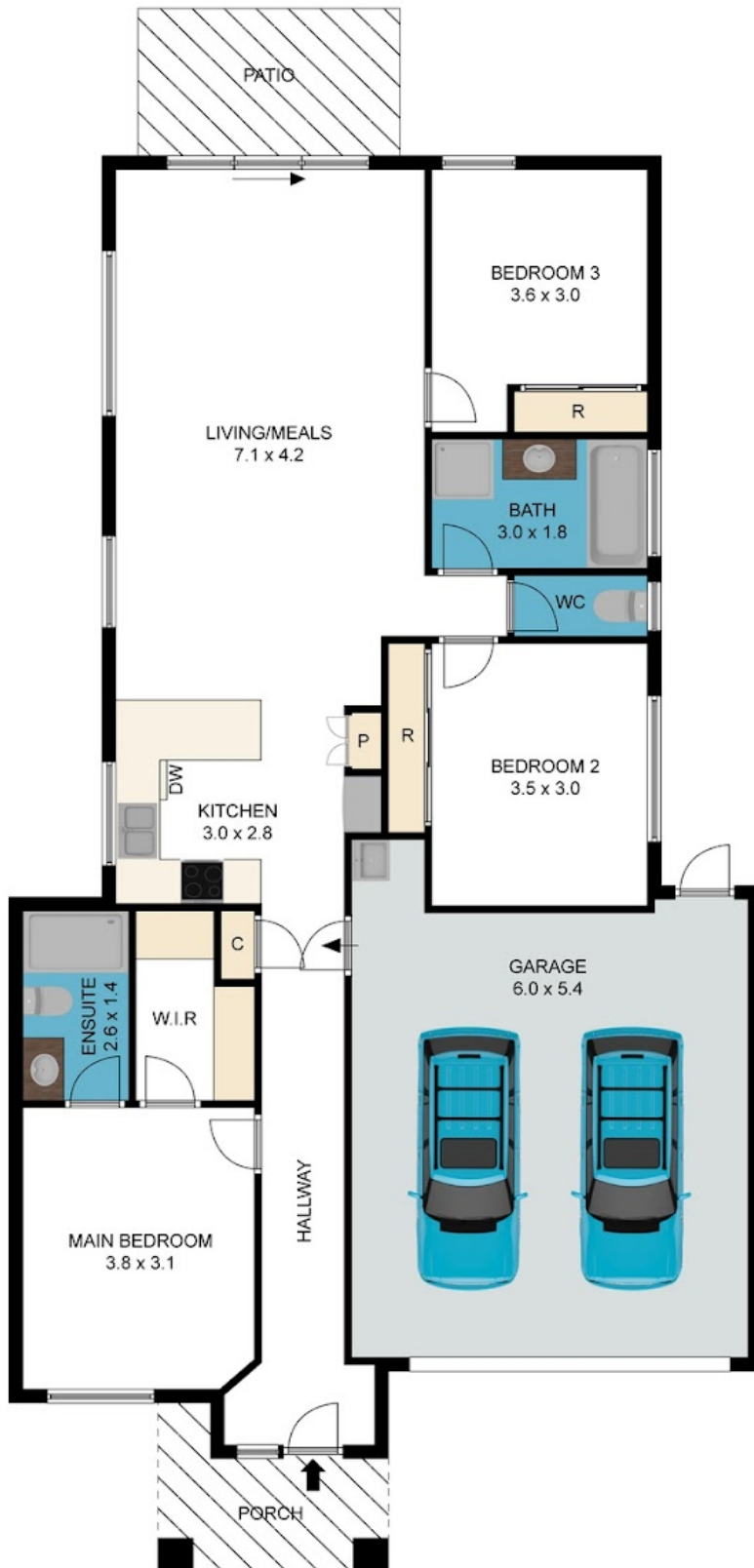
3 BED | 2 BATH | 2 CAR

PRICE:
\$845,000

OPEN FOR INSPECTION:
N/A



Bill Katsoulis
0419514276
billkatsoulis@atrealty.com.au
www.atrealty.com.au



Disclaimer: Please note this floor plan is for marketing purposes and is to be used as a guide only. All dimensions are estimates only and may not be exact measurements.

Bill Katsoulis
0419514276

billkatsoulis@atrealty.com.au
www.atrealty.com.au

13A Byron Road, Kilsyth

Whilst every attempt has been made to ensure the accuracy of the floor plan contained here, measurements of doors, windows, other items are approximate and no responsibility is taken for any error, omission, or mis-statement. This plan is for illustrative purposes only and should be used as such by any prospective purchaser. The services, systems and appliances shown have not been tested and no guarantee as to their operability or efficiency can be given.

@realty
@realty

