

105/1 OCEAN PARADE, COFFS HARBOUR, NSW, 2450



**SOLD**

## IMMACULATE HOME WITH ENTERTAINMENT ALFRESCO AND HIGHTOP DOUBLE CARPORT

The spacious well equipped home is suitable for the active couple who are looking for a sea-change Just walk through the gates and over the road and you're on the beach.

The Kitchen is full size with a large pantry. There is an electric cooktop and electric oven and a large area of bench space. The living/dining room has vaulted ceilings, and timber floors, featuring plenty of space for entertaining guests and family.

Featuring 2 queen size bedrooms, The main bedroom features large robe, and a stylish ensuite. The main bathroom is centrally located and tastefully finished.

The laundry is close by featuring a large cupboard with sliding doors that looks after all your storage needs.

At the rear of the home there is a beautiful space for reading and relaxing - you can enjoy all year round. care with gorgeous, tropical plants and plenty of colour.

No need for a car here, this is a safe-haven sanctuary, where you're a short stroll to beach, the shops, bus stop, cafes, restaurants, go for an early morning walk through the side gate and walk across the road to the beach.

This property has a garden shed /storage area, a large carport with a high ceiling.

Additional advantages are no stamp duty, no council and water rates as well as low-site fees. So if you are seeking a sense of belonging, opportunities to connect with like-minded people or sense of security afforded by a close-knit community, consider this amazing opportunity situated at the BIG4 Holiday Park in Coffs Harbour. Use all of the amenities included in this beautiful park - feel like you're on a holiday all year round.

Call Cheryl Donaldson today on 0466 037 468 for your inspection.

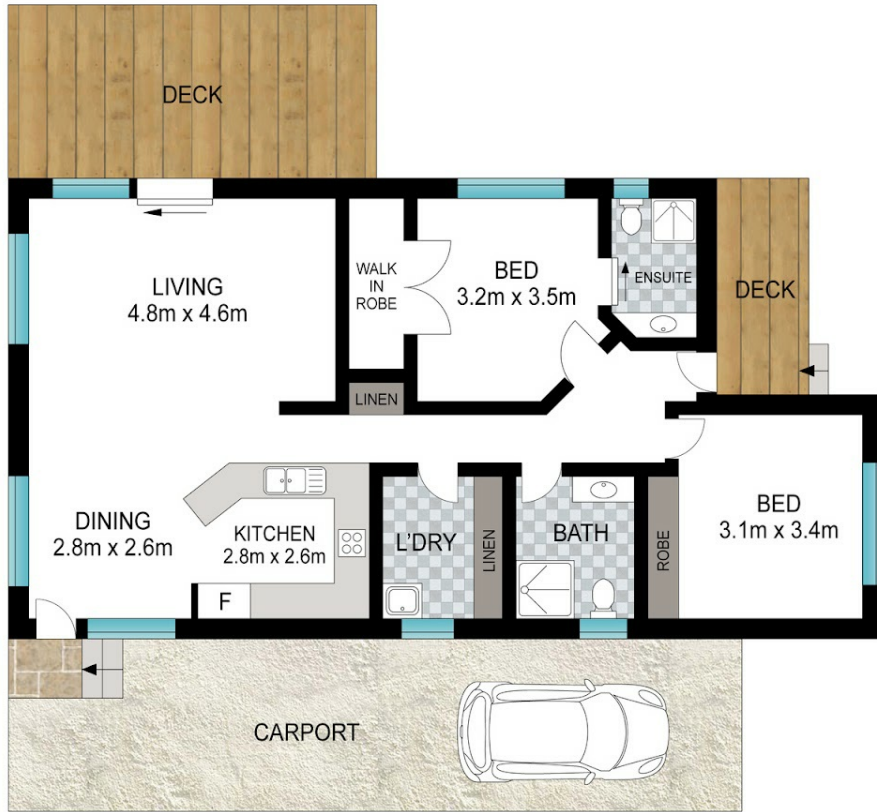
**2 BED | 2 BATH | 2 CAR**

**PRICE:**  
\$525,000

**OPEN FOR INSPECTION:**  
N/A



**Cheryl Donaldson**  
**0466037468**  
cheryl@atrealty.com.au  
[www.atrealty.com.au](http://www.atrealty.com.au)



INT: 90 m<sup>2</sup>  
EXT: 20 m<sup>2</sup>

Scale in metres. Indicative only. Dimensions are approximate. All information contained herein is gathered from sources we believe to be reliable. However, we cannot guarantee its accuracy and interested persons should rely on their own enquiries.

105/1 Ocean Parade, Coffs Harbour



Disclaimer: Please note this floor plan is for marketing purposes and is to be used as a guide only. All dimensions are estimates only and may not be exact measurements.

**Cheryl Donaldson**  
0466037468  
cheryl@atrealty.com.au  
[www.atrealty.com.au](http://www.atrealty.com.au)

