



SOLD

26 ACRES OF RUSTIC CHARM

I think the first thing that comes to most peoples minds when first stepping foot on this property, is Wow - this place is amazing and I wish it was mine!

Tucked away in the picturesque country region of Kellevie, you will find yourself on 26 private acres, complete with a stunning 4-bedroom home, the perfect sanctuary for you and your family. With a spacious floor area of 239 m2 you'll never feel cramped or confined in this beautiful home.

As you enter the house, you'll be greeted by the warm and inviting atmosphere that surrounds you. Every detail of this home has been thoughtfully and lovingly crafted to provide a remarkable living experience, from the timber flooring, raked ceilings, Celery Top and Oregon timber support posts, stone walls, along with the large angled picture windows that let in the golden hues of sunshine.

The open floor plan seamlessly connects the living, reading and kitchen/dining areas, creating a perfect space for entertaining guests or simply spending quality time with your loved ones. Each room leads out to the wrap around deck, blending the indoor and outdoor spaces.

The kitchen itself is its own culinary delight, bound to impress anyone who loves to cook with its high-end design, complete with granite bench tops, corner pantry and Smeg appliances.

The atmosphere continues upstairs to the top level, with the whole floor being the master bedroom, complete with ensuite, built in robes and a separate study area that could also be utilised as a walk in robe. A timber door leads out to a private balcony where you can sit, relax and breathe in that fresh country air.

Down stairs incorporates two queen sized bedrooms, whilst bedroom 4 is every kids dream, complete with a built in loft. The laundry area is large with plenty of space for dreaded laundry duties, whilst the main bathroom with features a unique hand crafted basin, separate shower and bath.

The property also boasts a workshop and a converted teenagers retreat with wood heating. This area could easily be renovated to make an ancillary dwelling {stca} or extra income for short or long term rental.

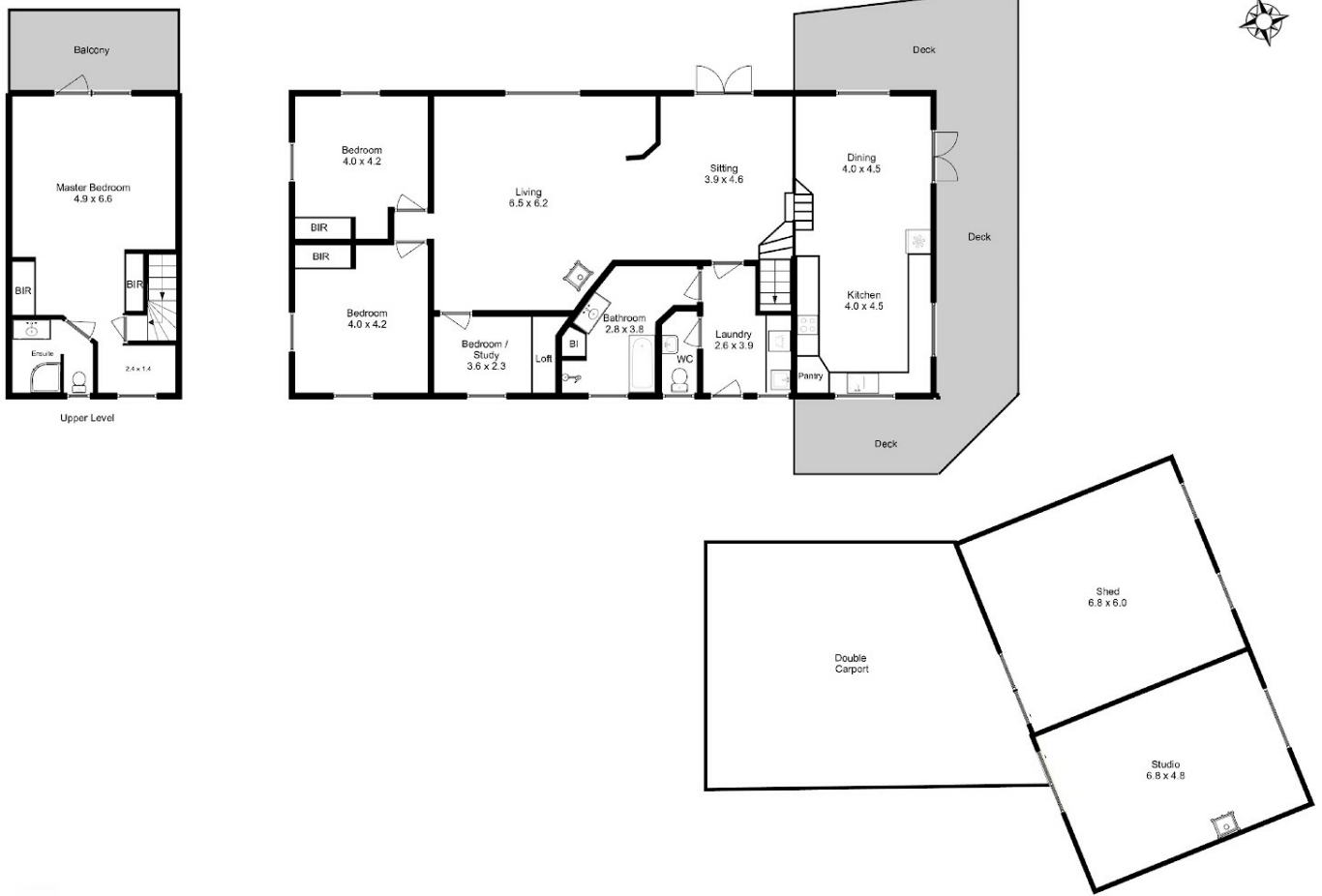
4 BED | 2 BATH | 3 CAR

PRICE:
\$860,000

OPEN FOR INSPECTION:
N/A



Nikki Moller
0408924765
nikkimoller@atrealty.com.au
www.atrealty.com.au



Approx. Floor Area : 239 sqm
Approx. Outbuilding Area : 78 sqm

All measurements are internal and approximate.
This plan is a sketch for illustration, not valuation.
Produced by Open2view.com

Disclaimer: Please note this floor plan is for marketing purposes and is to be used as a guide only. All dimensions are estimates only and may not be exact measurements.