

28 WEST STREET, NAMBUCCA HEADS, NSW, 2448



SOLD

SEASIDE SERENITY: YOUR DREAM HOME WITH STUNNING OCEAN AND MOUNTAIN VIEWS!

Discover your perfect family oasis in this expansive 4-bedroom home, featuring a luxurious main bedroom with ensuite. Enjoy the spaciousness of two living areas and a large kitchen that boasts stunning ocean and mountain views, perfect for entertaining or family gatherings. Step outside to a generous backyard, ideal for kids and pets, and relax on the front and back balconies while soaking in the serene surroundings.

Located within walking distance to the river and pristine beaches, you'll have easy access to local clubs and recreational activities. The property also includes a large workshop with 3-phase power, perfect for hobbies or extra storage. With solar panels to enhance energy efficiency, this home combines comfort, convenience, and sustainable living. Don't miss the chance to make this dream home yours! Commanding an elevated position in one of Nambucca's best streets this large family home is sure to please. Boasting an abundance of space and natural light, multiple living areas and being perfect for those who like to entertain it doesn't get much better than this. From here you are in walking distance to Nambucca main street and the parks and the beautiful beaches of Nambucca heads. Give Cheryl Donaldson a call today on 0466 037 468 for your private inspection.

4 BED | 2 BATH | 2 CAR

PRICE:
\$820,000

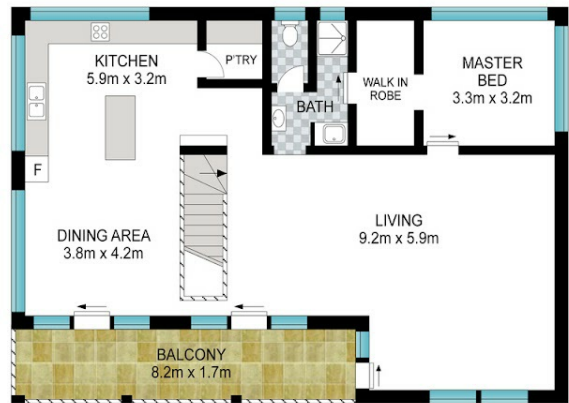
OPEN FOR INSPECTION:
N/A



Cheryl Donaldson
0466037468
cheryl@atrealty.com.au
www.atrealty.com.au



GROUND FLOOR



FIRST FLOOR



BASEMENT



Scale in metres. Indicative only. Dimensions are approximate. All information contained herein is gathered from sources we believe to be reliable. However, we cannot guarantee its accuracy and interested persons should rely on their own enquiries.

INT: 212 m²
EXT: 129 m²



28 West St, Nambucca Heads



Disclaimer: Please note this floor plan is for marketing purposes and is to be used as a guide only. All dimensions are estimates only and may not be exact measurements.

Cheryl Donaldson
0466037468
cheryl@atrealty.com.au
www.atrealty.com.au

