



FOR SALE

AN IDEAL HOME IN PRIME LOCATION

This well-presented house with build area of 193m² has many advantages; more access points, more breezes and abundance of natural lighting, more spots for parking. The open floor plan allows for easy flow between the living, dining, and kitchen areas, making it perfect for entertaining guests or spending quality time with your loved ones.

Featuring:

- Large corner block 417m²
- 4 bedrooms with new hybrid flooring
- Master Bedroom with ensuite
- Large main bathroom
- Double garage
- Separate Toilet
- Separate laundry
- Undercover alfresco entertaining area
- Easy to maintain yard
- Air Conditioning in living and dining area

Located in the popular suburb of Pimpama, this property is in a prime location. With easy access to schools, parks, shops, and public transportation, you'll have everything you need right at your fingertips. And for those who commute, the nearby M1 motorway makes getting to the Gold Coast, Logan, and Brisbane.

4 BED | 2 BATH | 2 CAR

PRICE:

Contact Agent

OPEN FOR INSPECTION:

N/A

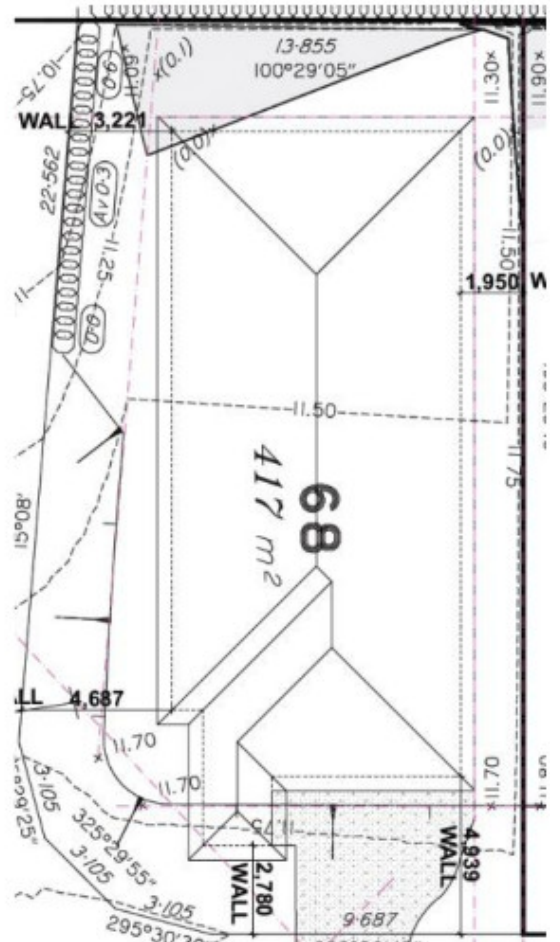


John Yii

0420745505

johnyii@atrealty.com.au

www.atrealty.com.au



Disclaimer: Please note this floor plan is for marketing purposes and is to be used as a guide only. All dimensions are estimates only and may not be exact measurements.