



SOLD

"MANSFIELD CATCHMENT, " THIS CHARMING
UPDATED POST WAR HIGHSET IS WAITING FOR
YOU."

"Mansfield Catchment, " This Charming updated Post War Highset is waiting for you."

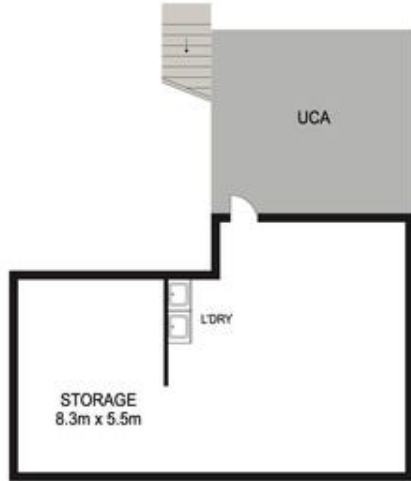
3 BED | 2 BATH | 2 CAR

PRICE:
\$1,155,000

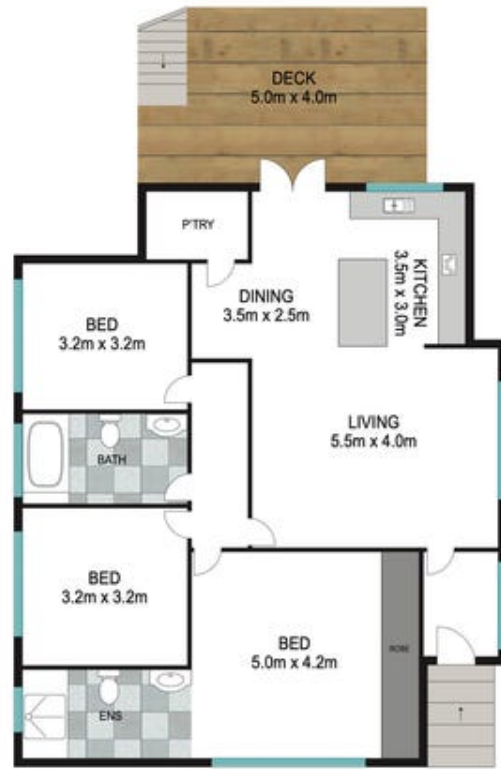
OPEN FOR INSPECTION:
N/A



Sana Campbell
0404299916
sana.campbell@atrealty.com.au
www.atrealty.com.au



LOWER LEVEL



UPPER LEVEL

INT: 170 m²
EXT: 50 m²



Scale in metres. Indicative only. Dimensions are approximate. All information contained herein is gathered from sources we believe to be reliable. However we cannot guarantee its accuracy and interested persons should rely on their own enquiries.

30 Dorien Street, Mount Gravatt East

Disclaimer: Please note this floor plan is for marketing purposes and is to be used as a guide only. All dimensions are estimates only and may not be exact measurements.