

SOLD

ELEVATED SOLID BRICK HOME ON BIG BLOCK!

This home is situated up high and in a gorgeous surprisingly quiet and leafy part of forest lake. With close proximity to everything you need, and a large fully fenced yard for the kids and fur babies to run around. With established trees surrounding and a nice flat usable block, the possibilities are endless here. With good solid bones, either a quick freshen up or a full Reno - whatever your heart desires. With a 600sqm block, 20m frontage some will consider adding a granny flat.

This home boasts a generous open plan living and dining adjoining a sweet and function kitchen - with extensive pantry space. A massive covered outdoor area overlooking your very large and private backyard gently shaded by some beautiful established trees. With new-ish colour bond fencing, and 8KW solar panel system and solar hot water, your living expenses can 'take a breath'. This home will make a gorgeous first home, family home and a very sensible investment for the future.

This home features:

- Open plan living and dining area
- Functional kitchen overlooking your massive covered outdoor patio
- 3 spacious bedrooms all with built in robes
- One functional walk through bathroom with separate bath and shower
- Separate toilet
- Separate and functional laundry
- 2x near new air conditioning units (one in living room, second in larger front bedroom)
- Massive usable 600sqm block with 20m frontage
- Fully fenced with colour bond fencing (aprox. 3 years young)
- Solid brick construction with tile roof (1992 Build)
- Single carport or double tandem

This home is priced to sell with very motivated sellers, so do not miss out this weeks open homes, as this one will sell quick!

Call Demelza Mitchell today if you are interested in this home.

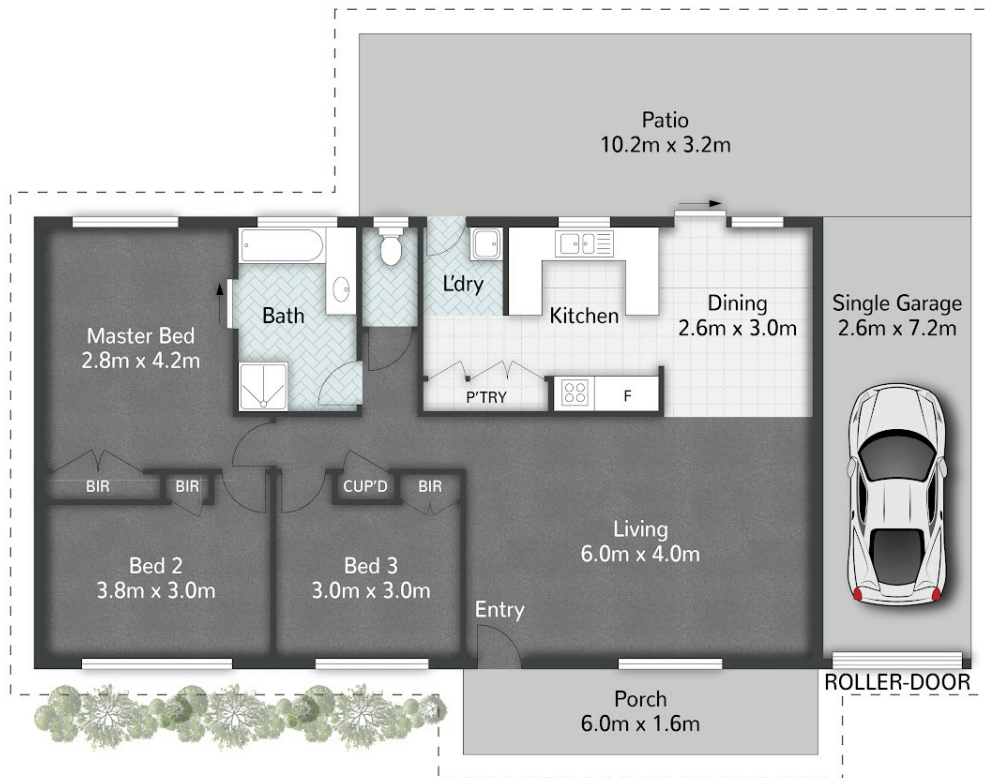
3 BED | 1 BATH | 2 CAR

PRICE:
\$717,000

OPEN FOR INSPECTION:
N/A



Demelza Mitchell
0487321021
demelza@atrealty.com.au
www.atrealty.com.au



603 Archerfield Road **FOREST LAKE**

3 | 1 | 1 | 174m² | 600m²

All dimensions are approximate; they are subject to errors and inaccuracies and no liability will be accepted. Plans are shown for marketing purposes only.

Disclaimer: Please note this floor plan is for marketing purposes and is to be used as a guide only. All dimensions are estimates only and may not be exact measurements.