

# SOLD

## UNIQUE SIDE BOUNDARY TOWNHOUSE WITH HUGE YARD!

Quietly positioned on the fringes of Darwin's thriving CBD is this tranquil townhouse tucked away in a little community setting with tree lined streets and soft sea breezes.

Welcome home. Drop the daily commute in favour of more free time but don't drop your standards for some sprawling city apartment - relax in your own tranquil treetop townhouse with a generous outdoor entertaining area and private courtyard plus plenty of internal space to entertain or relax.

At the front of the home is a single carport parking bay plus a secondary side parking space with room to park more vehicles. There is a sheltered front porch that leads through to the open plan living and dining areas with tiled flooring and A/C plus a large window that lets in the natural light. The kitchen at the rear with an additional toilet downstairs. The kitchen has an abundance of storage and wrap around benchtops and plus the laundry amenities and a double french door through to the side courtyard entertaining making the flow from indoors to outside very easy. A large side verandah that overlooks easy care gardens with plenty of space for the party, BBQ or just to relax outside with the dog. A rear garden shed will house all your tools as well.

Upstairs the home has two bedrooms, both filled with a soft natural light, both have tiled flooring and split system airconditioning along with built in robes. The master bedroom includes a front balcony allowing you to open up for the fresh breeze.

There is a bathroom of course with all the basics taken care of. Only 5 minutes from the heart of the CBD, this property allows you to drop the daily commute in favour of more free time without compromising on space at all. Take an orange scooter through to the city in under 5 minutes or walk up the street to meet friends for a coffee at one of many cafes or restaurants along the strip. The Water Front Prescient is not far away as is Cullen Bay and the Esplanade all basking in the glorious sea breezes and tropical vibes. Around the Suburb: Walk to the CBD in moments Jump on an e-scooter to shoot in the city Nearby cafes, employment and more 5 minutes to the Water Front Prescient 5 minutes from Cullen Bay Marina

About the Property:

Area under title: 253 Metres square

Year Built: 1989

Easements: None found Council rates: \$1,676.00 per annum (approx.)

Body Corporate Management: Elite Strata Management

Body Corporate Fees: approx \$1,470.00 per quarter

Current Rental Appraisal : \$550 per week

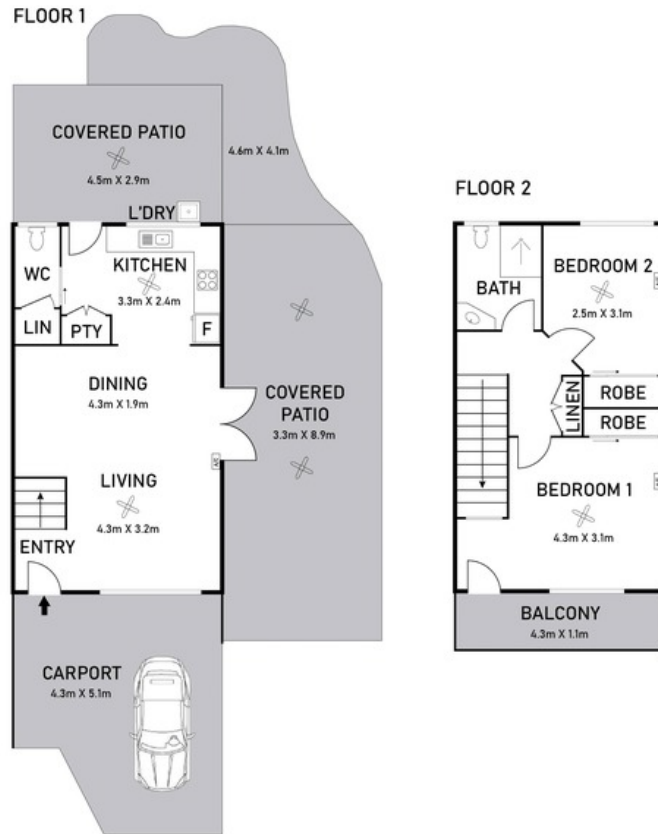
2 BED | 1 BATH | 1 CAR

PRICE:  
\$375,000

OPEN FOR INSPECTION:  
N/A



**Nicole Wheeler**  
**0417508800**  
nicolewheeler@atrealty.com.au  
[www.atrealty.com.au](http://www.atrealty.com.au)



Scale in metres. Indicative only. Dimensions are approximately. All information contained here in is gathered from source we believe to be reliable. However we cannot guarantee its accuracy and interested persons should rely on their own enquiries

## 5/16 Henry Street, Stuart Park

Disclaimer: Please note this floor plan is for marketing purposes and is to be used as a guide only. All dimensions are estimates only and may not be exact measurements.