



SOLD

NORTHGATE CONTEMPORARY LIVING

Unfolding over one amazing level this impressive residence boasts superior quality and intelligent design. Clean lines are rendered in quality materials for an eye catching facade. Inside, simple yet sophisticated interiors create an understated elegance accentuated by a crisp neutral palette.

The centrally located gourmet kitchen is the definition of form and functionality with a gas cooker, dishwasher, stone bench top, large pantry and glass splash back. Four bedrooms are serviced by two bathrooms for the best in unrestricted living. The master is spacious providing a walk-in-robe and a lavish ensuite with dual vanities.

Offering a second living or media room, this is the perfect area for movie nights or a space the children can call their own. The large entertaining area is the focal point and oozes relaxed outdoor living perfect for enjoying the afternoon breezes.

A low maintenance block allows you to enjoy your weekends and the grassed backyard provides plenty of room for a swing set, garden shed or family pet. A host of additional features further ensures your comfort and convenience, including a remote garage, ducted air conditioning, 2.7m ceilings, roller blinds throughout, insulation and water tank.

Amenities; 10km to CBD 400m to Northgate train station 400m to local bus transport 3 minute drive to Nundah Village 3 minute drive to north/south coast arterials 10 minute drive to domestic/international airports.

This property will sell quickly so don't delay, contact me to organise your inspection.

4 BED | 2 BATH | 1 CAR

PRICE:
\$1,180,000

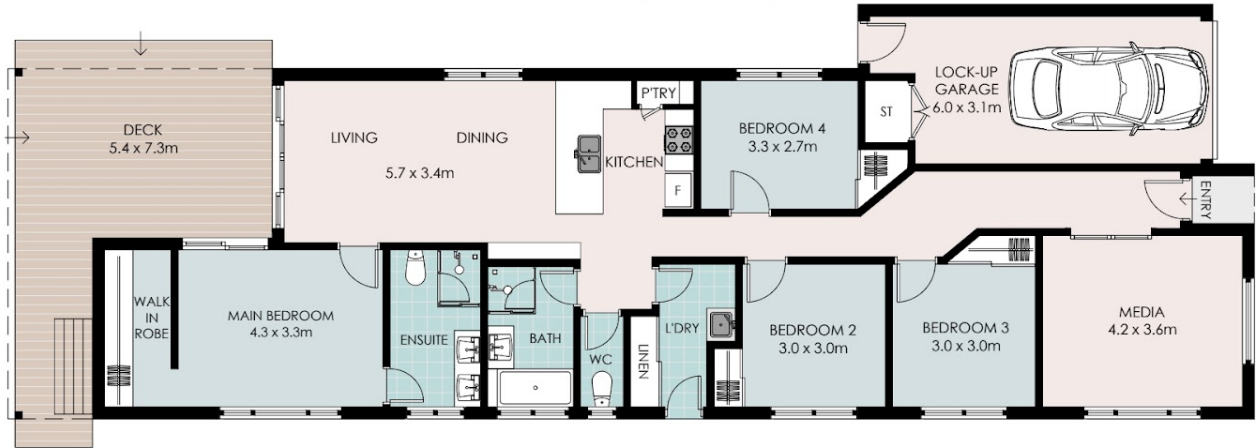
OPEN FOR INSPECTION:
N/A



Clint Devereaux
0431043556
clint@cdproperty.au



SITE PLAN (NOT ON SCALE)



Internal 156m² | External 32m² | Total Area: 188 m² | Land Area: 405 m²



17 LARWILL AVENUE, NORTHGATE



4 Beds

2 Baths + 1 Wc

1 Car

All information contained in this document is from sources we believe to be accurate, however we cannot guarantee its accuracy. Interested persons should make and rely on their own enquiries in relation to measurements, dimensions, layout, furniture and descriptions.

Disclaimer: Please note this floor plan is for marketing purposes and is to be used as a guide only. All dimensions are estimates only and may not be exact measurements.

Clint Devereaux
0431043556
clint@cdproperty.au

