

FOR SALE

BASIN VIEW GEM - REDUCED TO SELL!

Wright Way Realty Jervis Bay proudly introduces to the market what can only be described as a Basin View Beauty. Nestled in a serene location, this beautifully illuminated home features striking mitred windows and cathedral ceilings, offering an inviting atmosphere, and a sense of spaciousness.

- @ Open plan living, kitchen and dining room sit beneath high raked ceilings
- @ Enjoy rear yard access that backs onto the picturesque Corramy Regional Park & Nature Reserve.
- @ The bright kitchen, complete with mitred windows, enhances the joy of food preparation.
- @ Three spacious bedrooms, each with built-in wardrobes, provide ample storage.
- @ The property showcases expansive, low-maintenance lawns and gardens both front and back.
- @ An oversized lock-up garage and carport ensure your vehicles are secure and protected.
- @ A mix of brick veneer and clad construction stimulates the visual appearance of this lovely home
- @ This property is ideal as a family home, a holiday getaway, or an Airbnb investment portfolio
- @ Located on a fully fenced 578 sqm block, it's just a short distance from village shops and boat ramp.

@ Contact Glenn Wright now to schedule a viewing and make your dream of owning a home in Basin View a reality. Your new life of tranquility, comfort, and blissful living awaits!

3 BED | 1 BATH | 2 CAR

PRICE:

Price Guide \$700K

OPEN FOR INSPECTION:

N/A

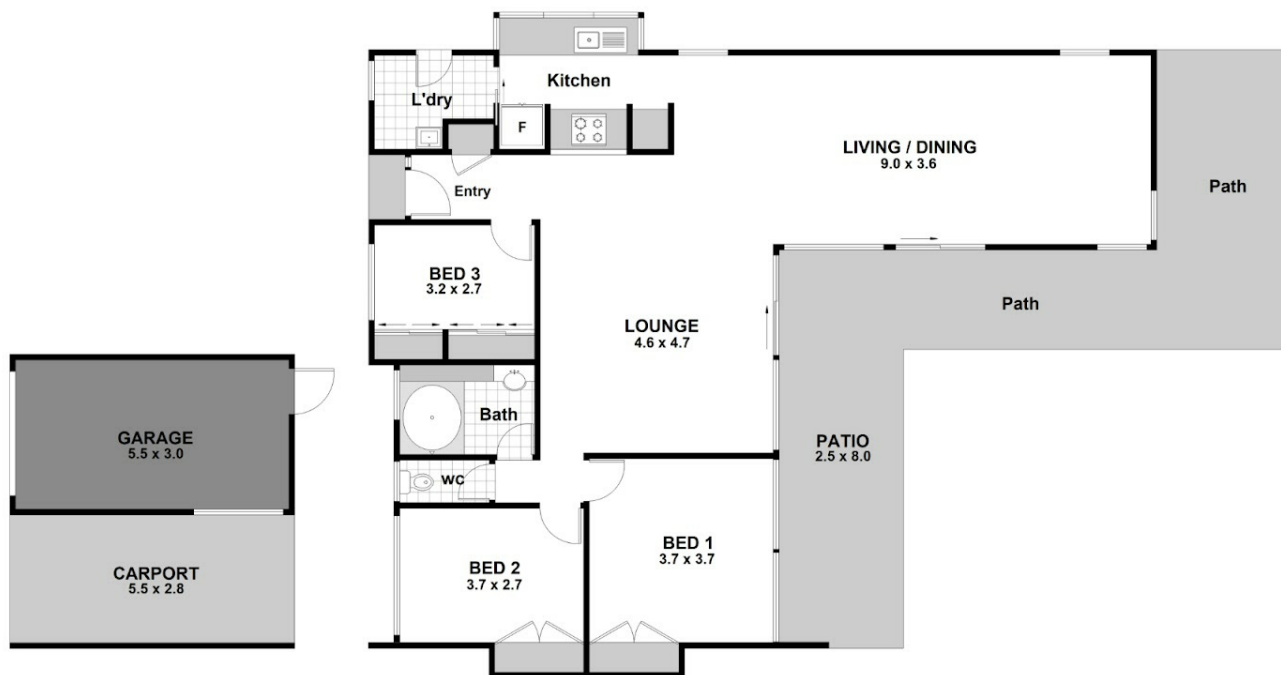


Glenn Wright

0408120866

glenn.wright@atrealty.com.au

Wright Way Realty



31 Harriss Avenue, BASIN VIEW



1



1



3

Scale is in Metres & indicative only & dimensions are only approximate.
The information contained & gathered herein is we believe from sources to be reliable.
We can not guarantee it's accuracy & persons should rely on their own enquiries.

WRIGHT WAY
realty
@realty

Disclaimer: Please note this floor plan is for marketing purposes and is to be used as a guide only. All dimensions are estimates only and may not be exact measurements.