



## FOR LEASE

### MODERN 3 BED, 3 BATH TOWNHOUSE IN SOUTHPORT - FOR LEASE JANINE-0419534436

This stunning property offers the perfect blend of comfort, convenience, and location, making it a fantastic option for those seeking to live close to all amenities including G-link, TAFE, Medical Practitioners, Shopping, Sporting facilities, Hospitals and much more.

As you enter this double-storey townhouse, you will be greeted by a sense of elegance and sophistication. The spacious floor plan encompasses three bedrooms and three bathrooms providing ample space for you and your family to live comfortably. With a floor area of 152 square meters this property offers plenty of room to move and grow. The fully fenced courtyard provides a secure and private space for you to relax and unwind. And with remote garage access, you can easily park your vehicles and have peace of mind knowing they are safe.

The indoor features of this townhouse are equally impressive. High-speed broadband internet is available, perfect for those who work from home or love to stream their favorite shows. The built-in wardrobes in each bedroom provide ample storage space. The modern kitchen boasts a dishwasher, walk in pantry and quality appliances. Whether you are a student, a professional, or an entrepreneur, this townhouse caters to your every need.

But let's not forget about the location. Southport is known for its vibrant community, beaches, and endless opportunities for entertainment. From cafes and restaurants to shopping centers and parks, everything you need is just a stone's throw away from your new home. And with easy access to public transportation, commuting to work or university or exploring the city is just so convenient.

#### Features:

- \* 11.5 Kilowatt Solar Power
- \* 3 bedrooms plus large rumpus/study
- \* 2 bathrooms plus powder room
- \* Remote gate and garage entry
- \* Private rear courtyard
- \* Split system and cooling plus ceiling fans
- \* Kitchen with dishwasher, walk-in pantry and plenty of cupboards

3 BED | 3 BATH | 2 CAR

PRICE:  
\$950 per week

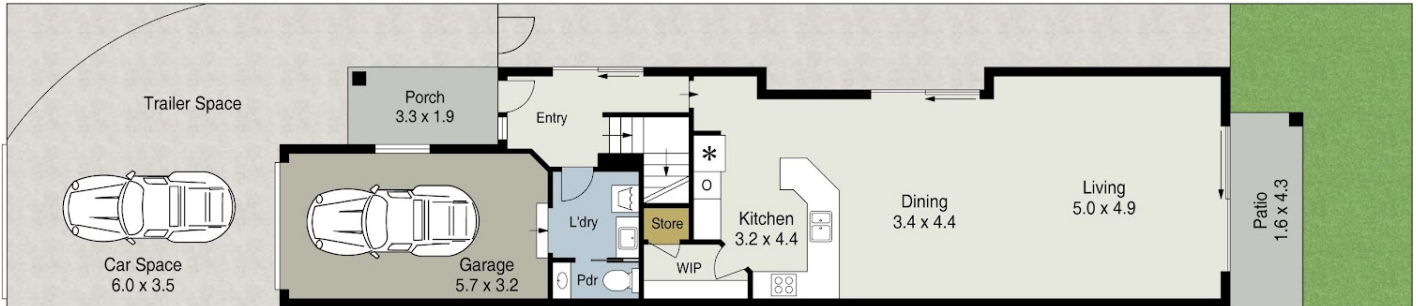
OPEN FOR INSPECTION:  
N/A



**Janine Redwood**  
**0419534436**  
janine@atrealty.com.au  
[www.atrealty.com.au](http://www.atrealty.com.au)



First Floor



Ground Floor

3/12 Prince Street, **SOUTHPORT**

Int : 152m<sup>2</sup>  
Ext : 37m<sup>2</sup>  
Total : 189m<sup>2</sup>

3 | 2.5 | 2 |

All measurements shown in metres are approximate and are for illustration purposes only. It should not be considered 100% accurate. Interested parties should rely on their own enquiries.

Disclaimer: Please note this floor plan is for marketing purposes and is to be used as a guide only. All dimensions are estimates only and may not be exact measurements.