

**SOLD**

## FAMILY HOME SET ON 1,460M2 IN A GREAT LOCATION

Featuring - 4 beds, 2 bath, 2 toilets, 2 separate living zones, 3 cars, balcony, veranda, and outdoor alfresco entertaining area. Set on a generous allotment of approx. 1462m2, offering future development opportunity (STCA) and perfect for the large or growing family.

Ideally located only minutes from primary, secondary, and preschools, bus transport, parks and gardens, sporting facilities, Lilydale Lake and an easy walk to Mount Evelyn shopping hub and surrounding amenities.

Showcasing cathedral ceilings, hard wood floors, front balcony, and beautiful street appeal. This split-level home comprises separate kitchen meals area, spacious family dining room, open plan lounge living room, large 4th bedroom or multipurpose room.

Features include master bedroom with walk in robe, luxurious family bathroom and ensuite, 3 spacious bedrooms with one converted to multipurpose room / home office, magnificent outdoor alfresco deck, veranda area with gas heated hot tub spa bath, huge back yard, double garage, double carport, gas ducted heating, wood fire heater, gas and electric appliances, rear yard access, ample storage, off street parking and so more. An inspection will delight!

Thinking of selling now or in the future? For a free-market appraisal Call, SMS Email. Moika Mazur 0431 111 081 moinka.mazur@atrealty.com.au or Lou 0417-166-668 or email lou@atrealty.com.au  
Inspection times and property availability are subject to change without notice.

Disclaimer: All information contained herein is gathered from sources we believe to be reliable. We cannot guarantee its accuracy and interested parties should make and rely on their own enquiries.

4 BED | 2 BATH | 3 CAR

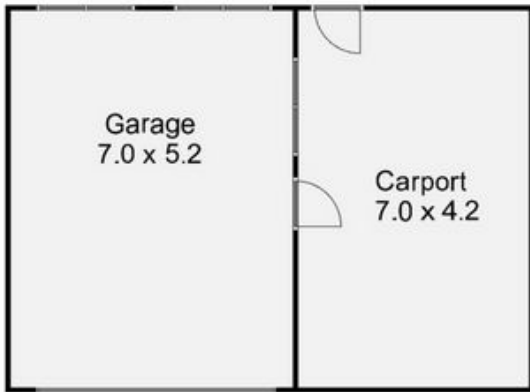
PRICE:  
\$880,000

OPEN FOR INSPECTION:  
N/A

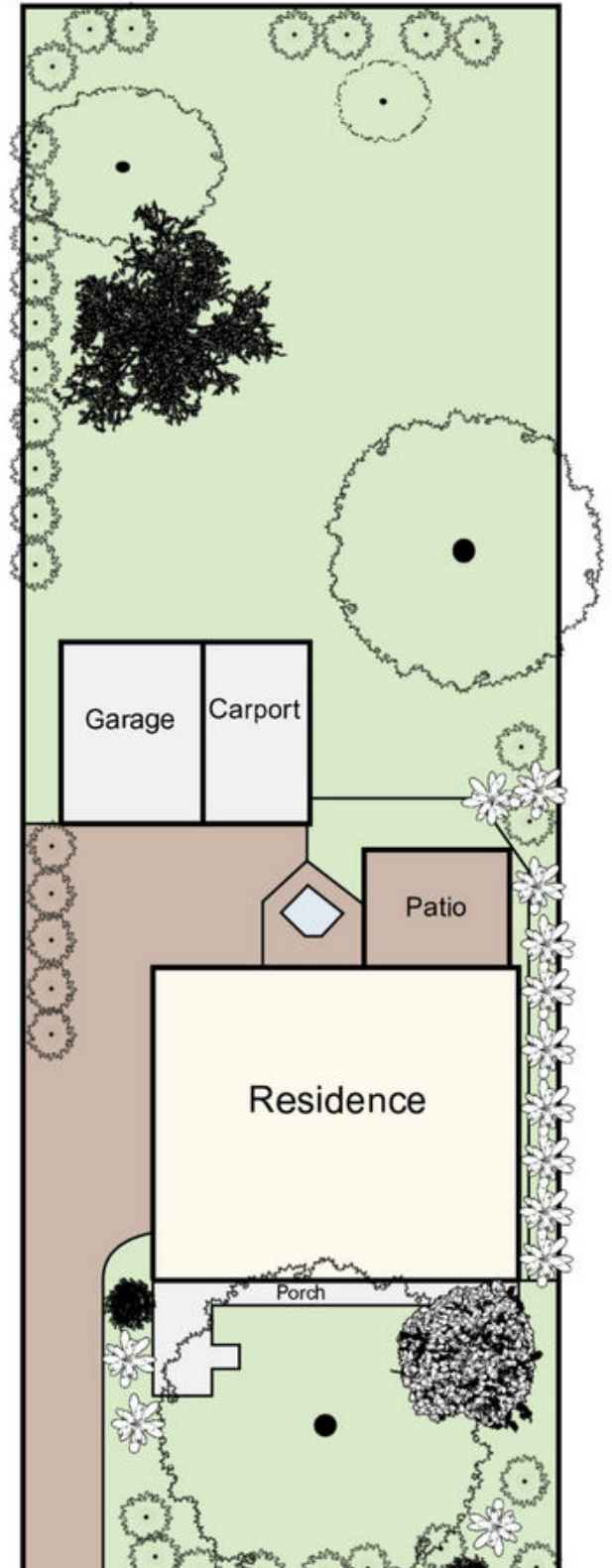


**Lou Rinnovasi**  
**0417166668**  
lou@atrealty.com.au  
[www.atrealty.com.au](http://www.atrealty.com.au)

# 4 Irvine Street MOUNT EVELYN



(not in position)



Disclaimer: Please note this floor plan is for marketing purposes and is to be used as a guide only. All dimensions are estimates only and may not be exact measurements.

Indicative only. Dimensions are approximate. All information contained herein is gathered from sources we believe to be reliable. We cannot however guarantee its accuracy and interested persons should rely on their own enquiries.

Lou Rinnovasi

0417166666

lou@atrealty.com.au

www.atrealty.com.au

@realty