



# FOR SALE

## RECENTLY RENOVATED TOP FLOOR PENTHOUSE!!!

This pristine condition 2 bedroom unit must be seen to be believed!

Featuring :

- 119m2 on title
- Both bedrooms are huge and have built in robes.
- The unit is air conditioned tiled throughout.
- Fully air-conditioned
- Modern Finishes
- Large open-plan living area connected to a large balcony for entertaining.
- Spacious kitchen with large bench tops plus lots of storage
- The bathroom is generous in size and separate toilet.
- Internal linen cupboard
- The unit comes with two carpark spaces
- No lift in complex

Just a few minutes from famous Nightcliff foreshore providing a peaceful and quiet lifestyle. Walking distance to schools, shops, markets and just 10 mins to Darwin CBD.

Move in straight away this apartment is offered vacant possession

Body Corp Managers : Castle

Body Corporate approx. \$1,510 per quarter

Council Rates approx. \$1,700 per year

Current Rental Appraisal : \$470-\$500 per week

Sorry No pets allowed in the complex

Year Built : 1994

2 BED | 1 BATH | 2 CAR

PRICE:

UNDER CONTRACT

OPEN FOR INSPECTION:

N/A

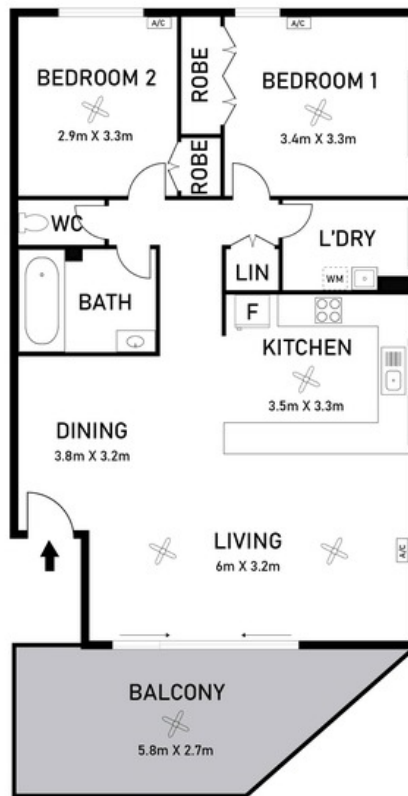


**Nicole Wheeler**

**0417508800**

[nicolewheeler@atrealty.com.au](mailto:nicolewheeler@atrealty.com.au)

[www.atrealty.com.au](http://www.atrealty.com.au)



## 9/24 Grevillea Circuit, Nightcliff

Disclaimer: Please note this floor plan is for marketing purposes and is to be used as a guide only. All dimensions are estimates only and may not be exact measurements.