



FOR SALE

PRESTIGIOUS & MASSIVE, PRIVATE QUALITY HOME WITH AMAZING VIEWS

Enjoy the breathtaking city views from this stunning executive residence. Imagine entertaining with friends and family poolside and tropical gardens along with the cool sea breezes and glorious sunsets that light up the sky.

The home has a gorgeous aesthetic with a lovely rear outdoor entertaining area. At street level the home presents with a chic design along with dual garage parking. Inside is a light filled living and dining area with tiled flooring and an abundance of openings that lead through to the outdoor entertaining areas for effortless flow.

The kitchen has stone benchtops along both sides with banks of cabinetry for easy storage and prep.

All of the bedrooms has tiled flooring underfoot and A/C as well while the master enjoys an ensuite bathroom and a walk in robe. The main bathroom includes a large shower and a bath tub there is additionally a home office with A/C and access to a ground level bathroom.

You will find established trees where the kids and pets can explore in the shade. Spend your free time exploring the CBD.

Take your lifestyle up a notch, you deserve it!

Featuring :

- Massive double storey home over 500m2
- Double garage parking at the front of this executive abode home office.
- Expansive open plan living and dining areas with sliding doors to the verandah Central kitchen has a stone topped bench pantry
- Master bedroom suite enjoys a private ensuite bathroom and walk in robe
- Internal laundry room has linen press and access to the yard scape.
- 3 additional bedrooms each with a generous footprint
- Main bathroom has a bath tub and shower with powder room.
- Verandah spans off the backside of the home overlooking the pool Marina side positioned with steps down to the waters edge
- Swimming pool and outdoor entertaining areas overlooks pool. Rear yard space with towering trees for privacy.
- Chic fascade at street level 5 minutes from the heart of the CBD.

With the waterfront areas along with the wave pool closeby. Walk to the marina nearby and enjoy the cool sea breezes and parklands, Marina setting within a privately held community.

5 BED | 3 BATH | 2 CAR

PRICE:

\$1.55m

OPEN FOR INSPECTION:

N/A

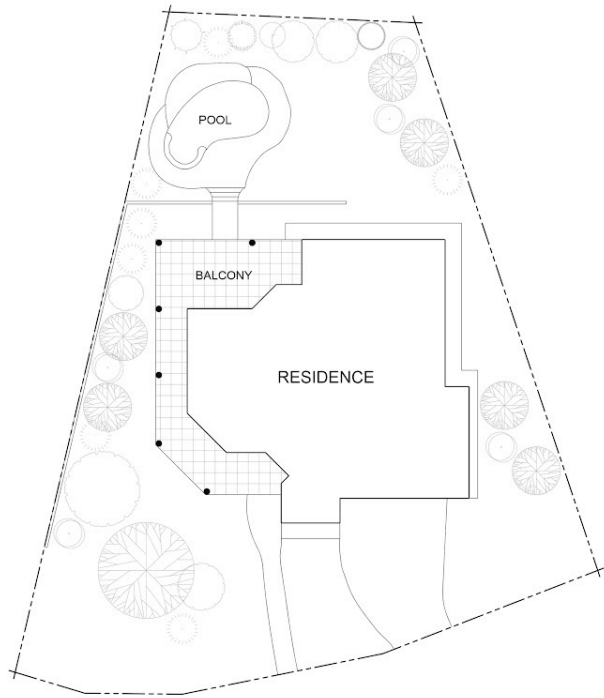
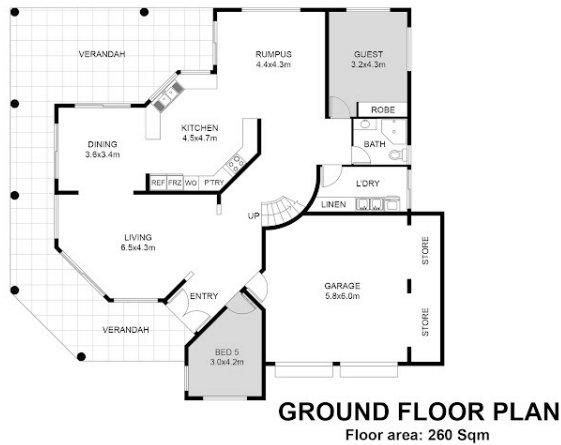
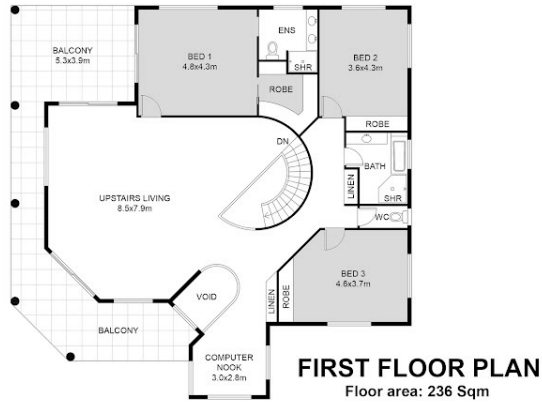


Nicole Wheeler

0417508800

nicolewheeler@atrealty.com.au

www.atrealty.com.au



This floor plan including furniture, fixture measurements and dimensions are approximate and for illustrative purposes only. BoxBrownie.com gives no guarantee, warranty or representation as to the accuracy and layout. All enquiries must be directed to the agent, vendor or party representing this floor plan.

Disclaimer: Please note this floor plan is for marketing purposes and is to be used as a guide only. All dimensions are estimates only and may not be exact measurements.