

SOLD

PERFECTLY POSITIONED WITH DUAL STREET ACCESS

Welcome to your dream home in the picturesque suburb of Roleystone, Western Australia. This stunning 4-bedroom, 2-bathroom house is the epitome of modern living with a touch of country charm. With a sprawling land size of 2061 square meters, this property offers the perfect balance of indoor and outdoor living.

As soon as you step foot onto this property, you will be enchanted by the tranquil surroundings. The front porch is the perfect spot to sit back, relax and take in the beauty of your new neighborhood.

As you enter the house, you will be greeted by natural light and a warm, homely atmosphere. The open-plan living and dining area is the heart of the home.

The house boasts four spacious bedrooms, each with built-in robes. The master bedroom is a true retreat, complete with a walk-in wardrobe and en-suite.

But the true gem of this property is the expansive backyard. With a land size of over 2061 square meters, you will have plenty of room to entertain, play, or simply relax. The outdoor area features a covered patio, perfect for hosting summer barbecues with family and friends. The kids will love running around and you can even add a pool or a vegetable garden to make this space truly your own. The Backyard also currently consists of dual street access.

And the best part? This property is ready for you to make it your own. It is not tenanted, so you can move in right away and start living the life you have always dreamed of.

Located in the highly sought-after suburb of Roleystone, this property offers the perfect balance of peaceful country living with the convenience of being just a short drive away. You will have easy access to local schools, shops, restaurants, and public transport, making this the perfect place to call home for families, professionals, or retirees.

Don't miss out on the opportunity to own your own piece of paradise in Roleystone. With its spacious living, and endless possibilities, this property won't last long. Contact us today and start living your dream life in this beautiful home.

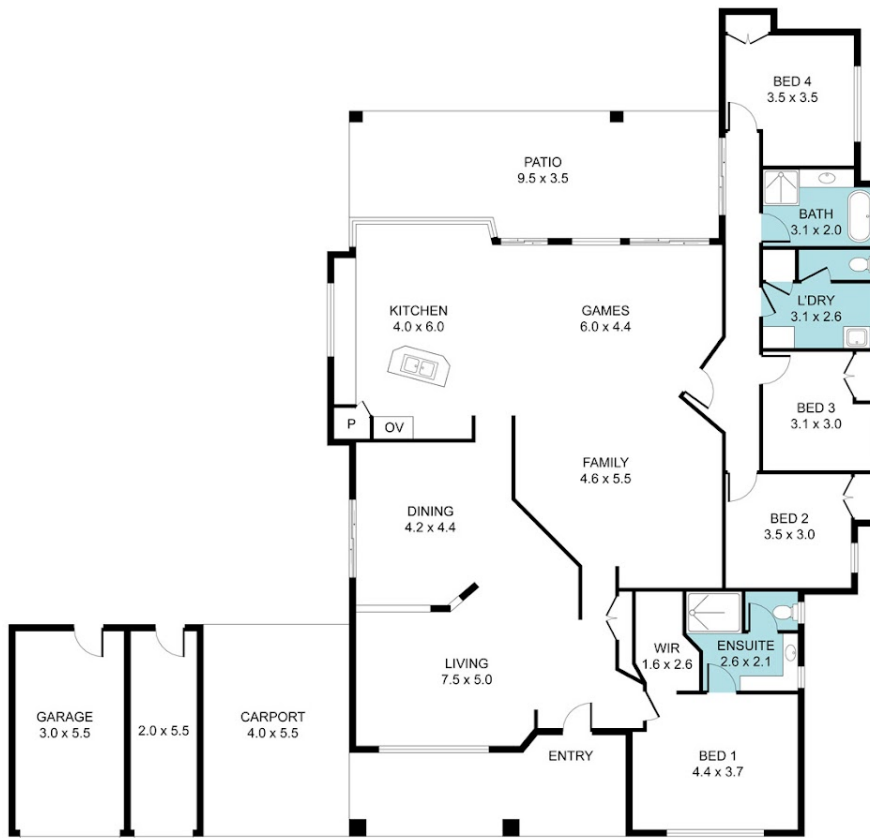
4 BED | 2 BATH | 2 CAR

PRICE:
\$875,000

OPEN FOR INSPECTION:
N/A



Mat York
0411207297
matyork@atrealty.com.au
www.atrealty.com.au



34 Westborne Road, Roleystone

Measurements and drawings indicative only

Living Area	220 sqm
Outdoor	101 sqm
TOTAL	321 sqm

Disclaimer: Please note this floor plan is for marketing purposes and is to be used as a guide only. All dimensions are estimates only and may not be exact measurements.