



SOLD

UNLIMITED POTENTIAL WITH A LOCATION TO MATCH.

Seize the opportunity with this Versatile Property! Grab this limited chance to buy a unique property in the sought after suburb of The Range. This stunning property has everything you could possibly desire and more, making it the perfect opportunity.

As soon as you step foot onto the expansive 789 square meters of land, you will be amazed by all the potential this property offers.

For the handyman of the house, the property boasts not one, but two sheds. These versatile spaces can be used for storage, a workshop, or even converted into a man cave. The possibilities are endless.

Moving inside, you will be greeted by a spacious home. With three bedrooms and a modernized bathroom. Each bedroom is fitted with large windows, allowing natural light to flood in.

The heart of the home is the open-plan living and dining area. With plenty of space, the kitchen is functional with ample storage, making cooking a sinch.

A standout feature of this property is the ample shed space. This is a car enthusiast's dream come true and offers plenty of space for all your vehicles, or even a boat or caravan. Say goodbye to the hassle of street parking and hello to the convenience and security of your own private garage.

This stunning property is currently available for sale and is not tenanted, meaning that you can move in and make it your own straight away.

Take full advantage of what this property has to offer. With its prime location, this property will generate a lot of interest. Contact us today. Oh and welcome to The Range, QLD.

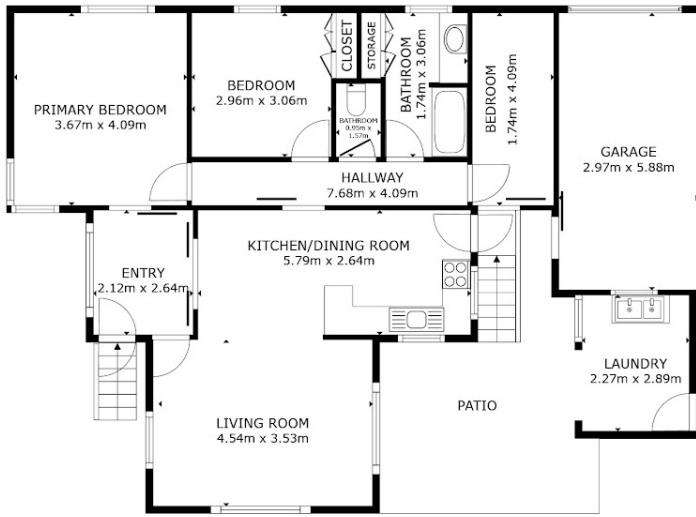
3 BED | 1 BATH | 3 CAR

PRICE:
\$485,000

OPEN FOR INSPECTION:
N/A



Layton Campbell
0415468963
laytoncampbell@atrealty.com.au
www.atrealty.com.au



FLOOR PLAN

GROSS INTERNAL AREA
 FLOOR PLAN 164.5 m²
 EXCLUDED AREAS : GARAGE 17.4 m² PATIO 20.7 m²
 TOTAL : 164.5 m²
SIZES AND DIMENSIONS ARE APPROXIMATE, ACTUAL MAY VARY.



Disclaimer: Please note this floor plan is for marketing purposes and is to be used as a guide only. All dimensions are estimates only and may not be exact measurements.