

8/14 LUCIAN AVENUE, SPRINGVALE, VIC, 3171



SOLD

"DISCOVER YOUR DREAM TOWNHOUSE IN SPRINGVALE WITH 3BDR, 2BTH, AND 2 CAR GARAGES"

++ READY TO MOVING IN NOVEMBER - 2024 ++

Don't miss this opportunity to secure one of eight exclusive townhouses, benefiting from the Victorian Off-the-Plan Stamp Duty Concession. By purchasing off the plan, you may qualify for valuable duty savings. Anyone buying an apartment, unit or townhouse off-the-plan can claim the concession – not just first home buyers and owner-occupiers. Thresholds will be removed so the concession is available for apartments, units and townhouses of any value.

Lock in today's price and enjoy potential appreciation in value, with an estimated completion date of November 2024.

Owner & Director of VIET HA SEPG

Viet Ha is proud to present this lovely house, which will appeal to both first-time buyers, investors or own business. This is your chance to own an impeccable, turn-key house in Springvale. Every imaginable inclusion has been considered to guarantee that this home gives an easy and comfortable lifestyle.

THE GOOD BITS

Welcome to your dream home in beautiful Springvale, VIC! This stunning townhouse is the perfect blend of modern comfort and peaceful suburban living. As soon as you step inside, you'll be greeted by an overwhelming feeling of warmth and tranquillity.

WHAT YOU'LL LOVE

This townhouse boasts 3 spacious bedrooms, providing ample space for you and your loved ones. Each bedroom is filled with natural light and boasts built-in wardrobes, ensuring that you'll never run out of storage space. The master bedroom even features a luxurious ensuite, allowing you to indulge in a private oasis after a long day.

With 2 stylish bathrooms, there will never be a queue for the shower in the morning. The

3 BED | 2 BATH | 3 CAR

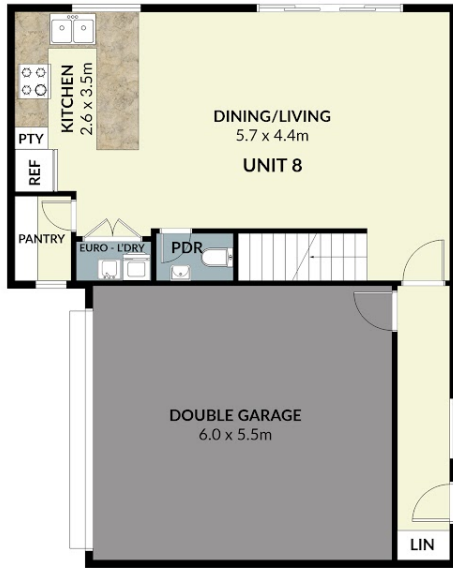
PRICE:
\$800,000

OPEN FOR INSPECTION:
N/A

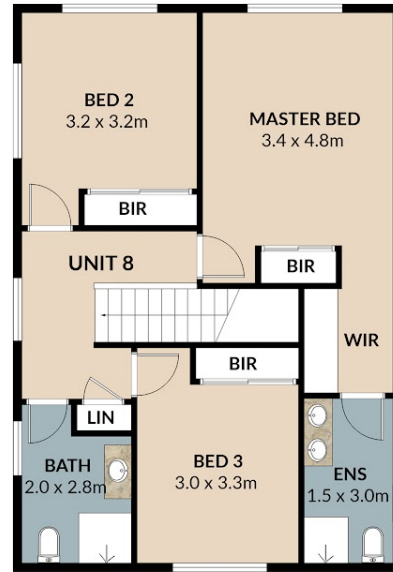


Viet Ha
0406246384
viet@vietha.com.au
vietha.com.au

UNIT 8/14 LUCIAN AVENUE, SPRINGVALE, VIC 3171



GROUND FLOOR



FIRST FLOOR

DISCLAIMER: THIS FLOORPLAN IS ILLUSTRATION PURPOSES ONLY, AND NO WARRANTY IS GIVEN TO ITS ACCURACY, PURCHASERS ARE ADVISED TO CARRY OUT THEIR INVESTIGATION



Disclaimer: Please note this floor plan is for marketing purposes and is to be used as a guide only. All dimensions are estimates only and may not be exact measurements.