



SOLD

PREMIUM QUALITY WITH EASY CARE ALLURE

Single level floor plan, meticulous fit out and high quality finishes, this brand new individually titled residence with street frontage sets the standard for superior low maintenance living.

Boasting 2.7m tall ceilings with LED downlights, and adorned with stylish flooring, soft carpet and sleek tiling, this home offers an incredible level of comfort.

- * Stunning kitchen featuring full suite of SMEG appliances and stone waterfall edge breakfast bar.
- * Two floor to ceiling tiled bathrooms
- * Three bedrooms, master with full ensuite
- * Spacious open plan living
- * Paved Alfresco area set within a beautifully landscaped garden
- * Double glazed windows
- * Ducted heating and refrigerated air conditioning
- * Heat pump hot water unit
- * Water tank
- * Remote double garage with internal house entry and much more.

All nestled in a no through road within walking distance of bus stops, trails, reserves, sporting ovals, Dorset Golf Course, medical centres, local shops & eateries.

BE QUICK - CALL BILL NOW ON 0419514276

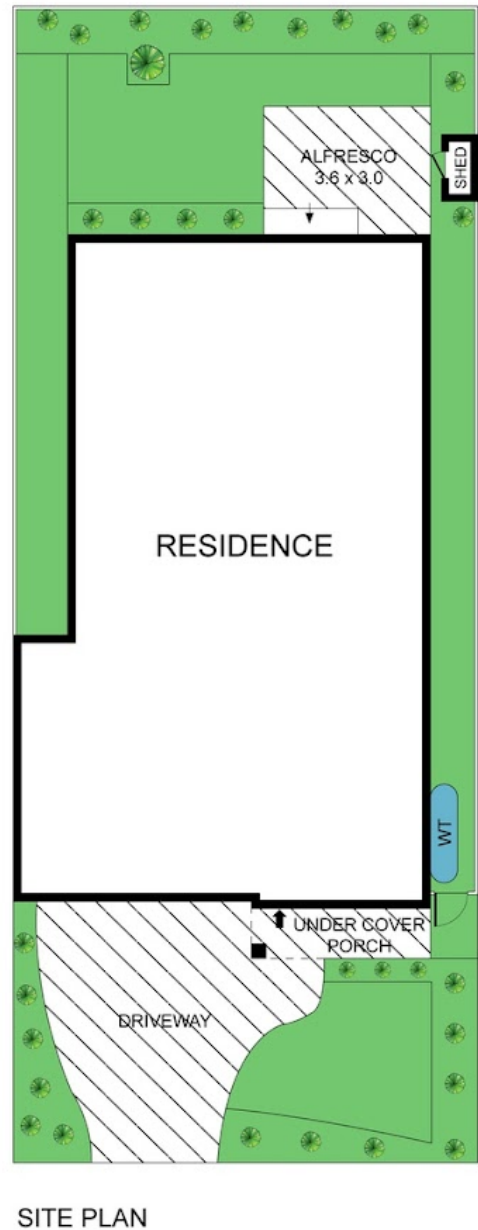
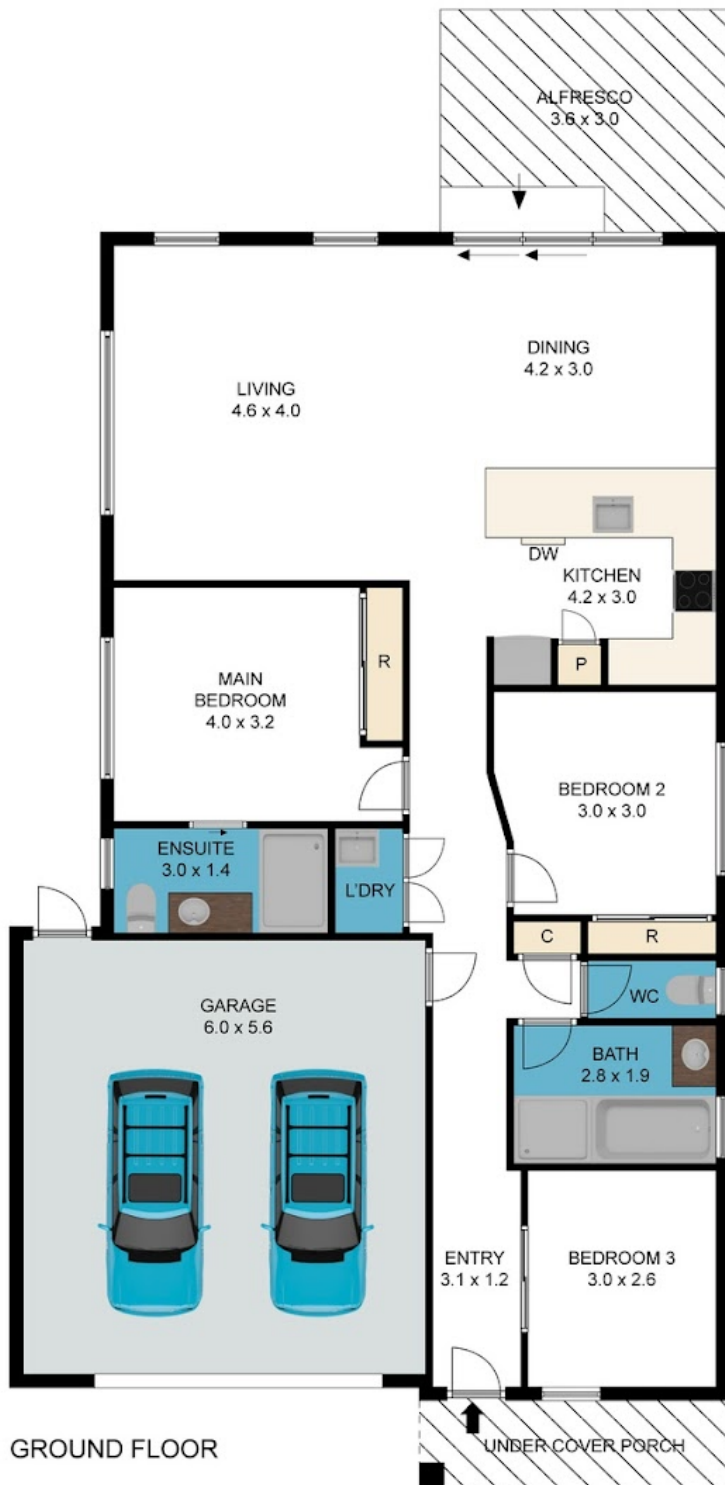
3 BED | 2 BATH | 2 CAR

PRICE:
\$940,000

OPEN FOR INSPECTION:
N/A



Bill Katsoulis
0419514276
billkatsoulis@atrealty.com.au
www.atrealty.com.au



Disclaimer: Please note this floor plan is for marketing purposes and is to be used as a guide only. All dimensions are estimates only and may not be exact measurements.

13 Byron Road, Kilsyth

Bill Katsoulis
0419514276

billkatsoulis@atrealty.com.au
www.atrealty.com.au

Whilst every attempt has been made to ensure the accuracy of the floor plan contained here, measurements of doors, windows, other items are approximate and no responsibility is taken for any error, omission, or mis-statement. This plan is for illustrative purposes only and should be used as such by any prospective purchaser. The services, systems and appliances shown have not been tested and no guarantee as to their operability or efficiency can be given.

@realty
@realty

