



**SOLD**

## THE MOST SIGNIFICANT BEACHFRONT ESTATE ON THE ENTIRE PERTH COASTLINE

Perth's Most Significant Beachfront Estate  
Opposite Coast Reserve On Two Boundaries  
With Forever Ocean Views

Shore | By Negotiation  
All Offers Presented.  
WILL BE SOLD.

\* The original 1960s home on 1201sqm next door is also available - combined the two would create a near 3/4 acre oceanfront estate with coast reserve on two boundaries, North and West!

### THE LOCATION

This is perhaps the most significant estate on the entire Perth coastline. Situated along the shoreline of South City Beach - the most central stretch of coastline to the Heart of Perth City. Directly opposite, the coast reserve is actually a part of Bold Park. In this location, a finite 27 homes have rear garden gates opening to the oceanfront dunes. 56 Challenger frames these dunes at their southern end and occupies nearly 2.5 times the land area of the average block size along this strip. One of only two properties in existence which front the coast reserve on two boundaries, this is the only property on the South City Beach Waterfront that does so facing north, with over 50M facing North over the coast reserve and approaching 30M facing West over the coast reserve.

The ocean is your backdrop behind the dunes in both directions. This aspect is a glorious, coastal, all-weather-protected sun-trap, cradling its tennis court amongst surround olive grove in the foreground and taking in a limitless and magnificent north-westerly coastal expanse of views beyond. The views out across the vast Indian Ocean that are akin to being on the West End of Rottnest. An endless, distant, sunbathed aspect all day long.

The property offers a rare duality of centrality and convenience due to its location on Perth City's most central beachfront and a remote sense of wilderness, isolation and privacy due to its extreme coastal fringe location nestled atop and within the primary coastal dune system.

**5 BED | 4 BATH | 5 CAR**

PRICE:  
**\$11,000,000**

OPEN FOR INSPECTION:  
N/A

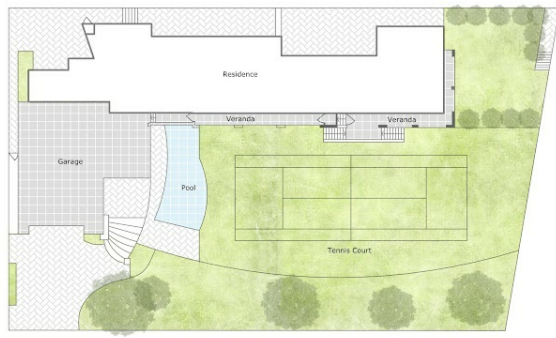
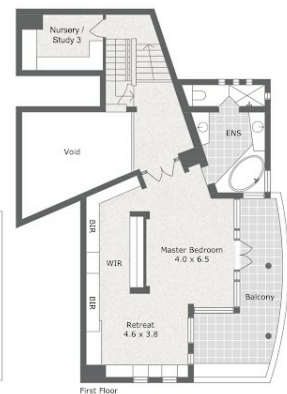


**Scott Swingler**  
**0403344649**  
scott@shore-property.com.au  
Shore Property



**Approximate Areas:**

Ground Floor	377 m <sup>2</sup>
First Floor	114 m <sup>2</sup>
Lower Floor	289 m <sup>2</sup>
Veranda	128 m <sup>2</sup>
Balcony	44 m <sup>2</sup>
Garage	132 m <sup>2</sup>
<b>Total</b>	<b>1084 m<sup>2</sup></b>



**56 Challenger Parade, City Beach WA 6015**

Care has been taken to ensure the accuracy of this floor/site plan, however all dimensions and areas should be considered as approximate. It has been produced as a guide for the purpose of the property sale or lease only. No credit is taken for the original building or landscape design. This floor plan/site plan design is subject to strict copyright and should not be reproduced, copied or altered without prior consent. The Agent, Vendor & Finesse Photography will not be held liable or responsible for any error, omission, misstatement or use of any data shown on this plan.



Disclaimer: Please note this floor plan is for marketing purposes and is to be used as a guide only. All dimensions are estimates only and may not be exact measurements.