



SOLD

SOLD AT FIRST OPEN HOME FOR A GREAT PRICE – CALL YOGI SHARMA TO DISCOVER YOUR PROPERTY'S POTENTIAL!

Perfect for first-time homebuyers, this townhouse offers easy access to amenities and will be available for move-in after the lease expires on September 20, 2024. Enjoy your Christmas in December with your family and friends. The complex is mostly owner-occupied, presenting an excellent investment opportunity with a high ROI. Nestled in a tranquil complex at the end of Ewing Road, this home combines suburban living with unbeatable convenience.

Upon entering through the main door, you will find an open-plan carpet dining and living area, as well as a kitchen with a gas cooktop and a good-sized pantry. There is a separate laundry, which can be accessed through the second door from outside or through the kitchen, and a separate toilet downstairs. Don't forget about the spacious backyard with convenient side access at the townhouse!

Upstairs, there are two bedrooms. The master bedroom comes with two built-in wardrobes, and the second bedroom also has a built-in wardrobe. There is a modern tiled bathroom with a toilet.

Resort-Style Living:

The well-maintained complex features a resort-style swimming pool for hot summer days. Steps away from your front door, you can enjoy relaxation and recreation.

Prime Location:

Located steps away from Foodworks, bus stops and minutes from major roads like Compton Road, Kingston Road, and Motorways, this property puts you in the heart of the action. Whether you need a late-night snack, a gym session, a movie night, or a special date, everything is easily accessible. Enjoy quick access to the highway, bringing Brisbane CBD and the Gold Coast within easy reach.

Income-Generating and Future Growth:

Currently rented at \$300 per week until September 20, 2024, this property starts generating income from day one. Its strategic location promises future growth and value.

2 BED | 1 BATH | 1 CAR

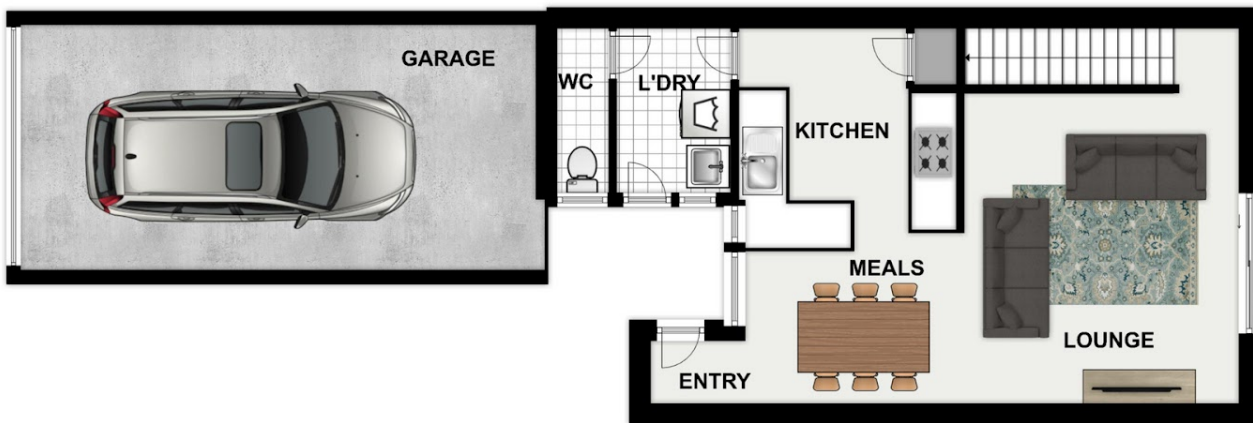
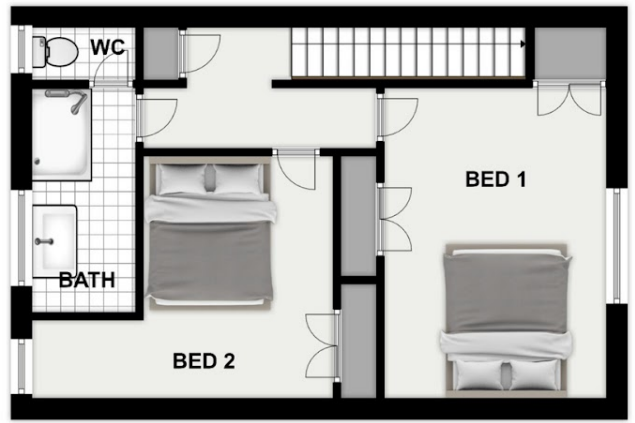
PRICE:
\$390,000

OPEN FOR INSPECTION:
N/A



Yogi Sharma
0415558800

yogi.sharma@atrealty.com.au
www.atrealty.com.au



Disclaimer: Please note this floor plan is for marketing purposes and is to be used as a guide only. All dimensions are estimates only and may not be exact measurements.