



SOLD

LUXURY LIVING IN HEWETT.

Exquisite 4/5 bedroom double-story home offering a flexible and versatile floor plan with 3 living areas.

Offering a comfortable lifestyle with stunning views both inside and out this family home is sure to impress.

Features include -

Formal entry

4 large bedrooms

Master with ensuite and walk in robe

Spacious lounge and dining area

Home office or 5th bedroom

Gas kitchen with walk in pantry and dishwasher

Open plan family/meals area

Two under cover outdoor entertaining areas

Double garage with additional storage

Ducted Reverse Cycle A/C throughout

Attractive front and rear gardens

Land size 820m² (approx)

Situated in a beautiful area amongst quality homes this is one you do not want to miss out on.

RLA 269823

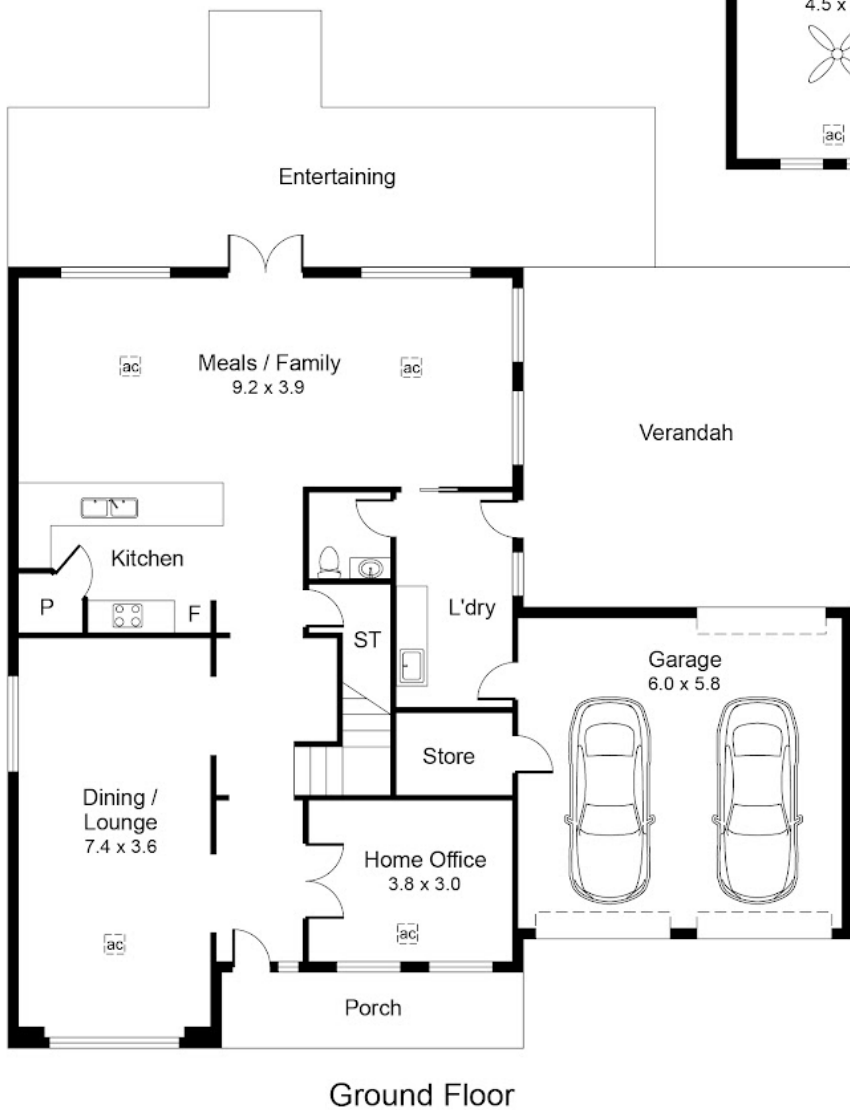
4 BED | 2 BATH | 2 CAR

PRICE:
\$838,000

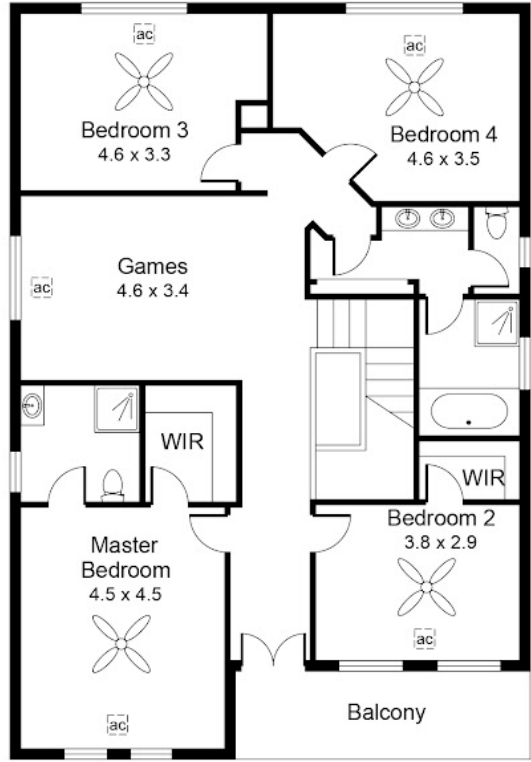
OPEN FOR INSPECTION:
N/A



Darren Bayford
0403776577
dbayford@atrealty.com.au
www.atrealty.com.au
RLA: 269823



Ground Floor



First Floor

265m² 274m² 91m²

Disclaimer: Please note this floor plan is for marketing purposes and is to be used as a guide only. All dimensions are estimates only and may not be exact measurements.