



## FOR SALE

### CHARMING BRICK HOME IN CENTRAL WERRIBEE

Nestled in the heart of Werribee, this charming brick home is perfect for first home buyers and savvy investors seeking a great block of land in a prime location.

Featuring a bright and spacious living area, this freshly painted and modernised home offers a contemporary feel throughout. The inviting interior includes a generous living zone, an open-plan kitchen and meals area, three well-appointed bedrooms—one of which is an enormous master—and a renovated bathroom.

Opening to the undercover outdoor entertainment area, the home extends its living space outdoors, perfect for gatherings or relaxing. The well-maintained brick facade adds to its curb appeal, while a generous carport offers ample parking. The spacious backyard with a large grassy area is ideal for children's play or outdoor relaxation.

This home is just steps from Werribee Village Shopping Centre and close to Pacific Werribee, offering retail and dining right at your doorstep. With easy access to Westgrove Primary School, Bethany Catholic Primary School, Wyndham Central College, and Galvin Park Reserve Parkland, it's perfectly positioned for family living.

Don't miss out on the opportunity to secure this fantastic home in Werribee. Call today to arrange an inspection and see for yourself what this property has to offer!

3 BED | 1 BATH | 2 CAR

**PRICE:**

\$520,000 - \$550,000

**OPEN FOR INSPECTION:**

N/A



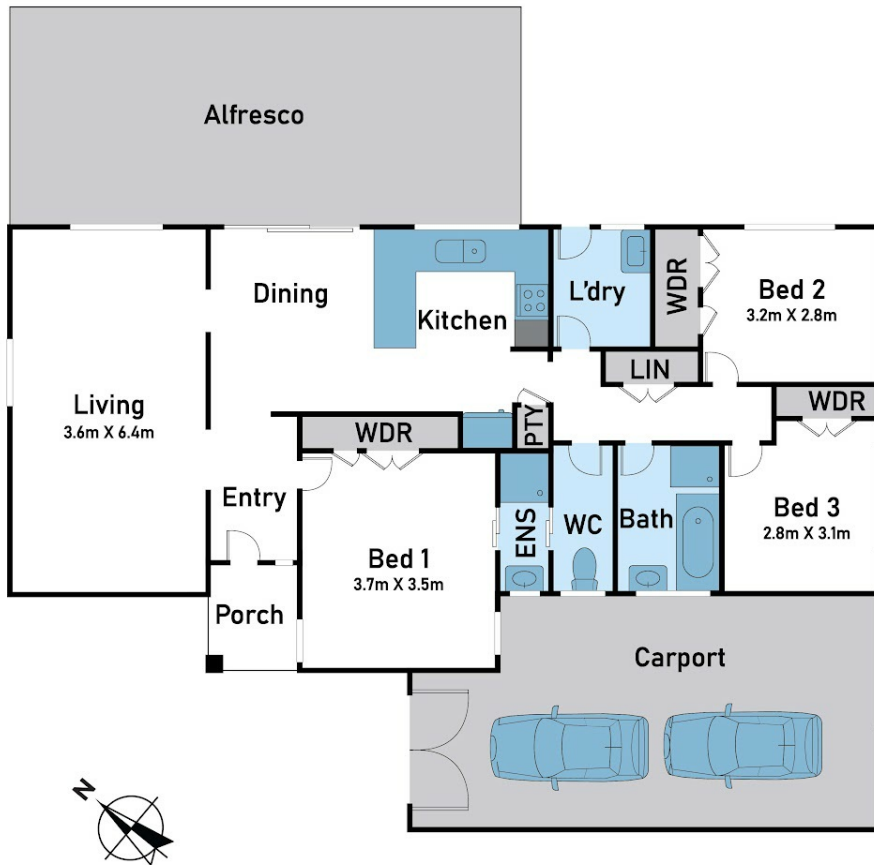
**Samuel Hogan**

**0401315234**

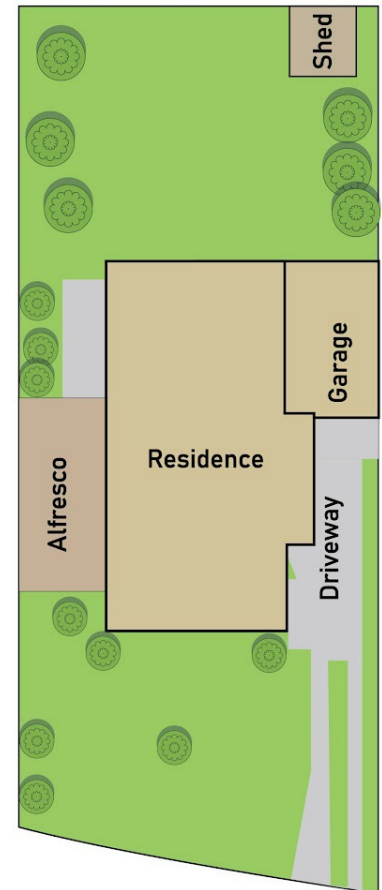
[samuel@atrealty.com.au](mailto:samuel@atrealty.com.au)

[www.atrealty.com.au](http://www.atrealty.com.au)

## Floor Plan



## Site Plan



## 9 Bunyip Court, Werribee

\* Dimensions are approximate and for illustrative purposes only

@realty

Disclaimer: Please note this floor plan is for marketing purposes and is to be used as a guide only. All dimensions are estimates only and may not be exact measurements.